

2000-2001 Georgia Public Education Report Card

Fulton County

E. C. West Elementary School - 6604069

Grade Range - PK-5

The Georgia Public Education Report Card is designed to assist systems and schools in educational improvement. This report card contains a variety of data elements. An explanation of the terms is provided as a companion to the report card data. Please refer to the definitions for the most effective use of the reported data.

STUDENT DATA

Total Enrollment, by Race/Ethnicity and Gender

Total	Black	White	Hispanic	Asian	American Indian	Multi-Racial	Male	Female
K-5: 460	220 47.8%	155 33.7%	60 13.0%	5 1.1%	0 0.0%	20 4.3%	243 52.8%	217 47.2%
PK: 56	22 39.3%	16 28.6%	12 21.4%	2 3.6%	0 0.0%	4 7.1%	25 44.6%	31 55.4%

Enrollment in Selected Programs

Program	Program Enrollment	% of Student Population
Gifted (Grades K-12)	11	2.4%
Alternative Programs (Grades K-12)	0	0.0%

Enrollment in Compensatory Programs

Program	Program Enrollment	% of Student Population
Special Education (Grades K-12) (PK)	61 4	13.3% N/A
English to Speakers of Other Languages (ESOL) (Grades K-12)	33	7.2%
Early Intervention Program (EIP) (Grades K-3)	127	43.9%
Remedial Education (Grades 4-5, 9-12)	58	33.9%
Title I (Grades K-12)	This School has a Targeted-Assistance Title I Program.	

Students Eligible to Receive Free/Reduced-price Lunches

	Number	Percent
School	292	56.6%
System	21,659	31.6%

Dropout Rate *

	Number	Percent
School	N/A	N/A
System	N/A	N/A

* - Dropouts are not reported for grades PK-5.

Retained Students, by Race/Ethnicity and Gender

Total	Black	White	Hispanic	Asian	American Indian	Multi-Racial	Male	Female
3	1 33.3%	0 0.0%	0 0.0%	0 0.0%	0 0.0%	2 66.7%	3 100.0%	0 0.0%

2000-2001 Georgia Public Education Report Card

Fulton County

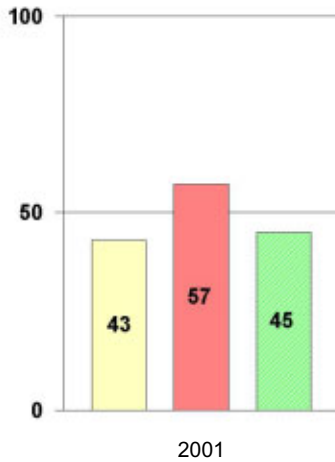
E. C. West Elementary School

NORM-REFERENCED ASSESSMENTS

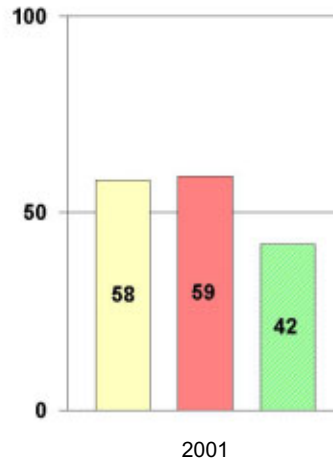
Stanford 9 Tests, Grade 3

Each chart reflects data for one year of testing.

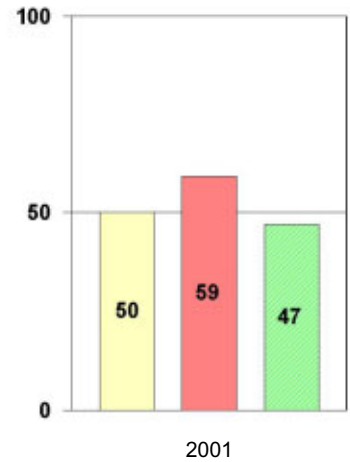
Total Reading



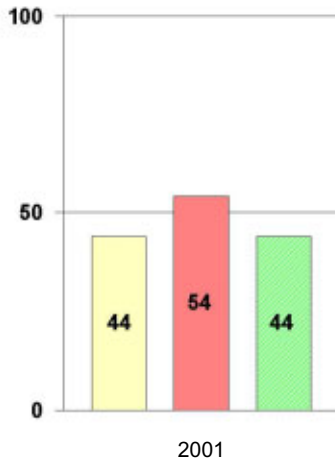
Total Mathematics



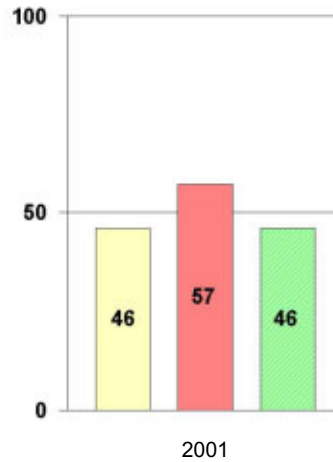
Language



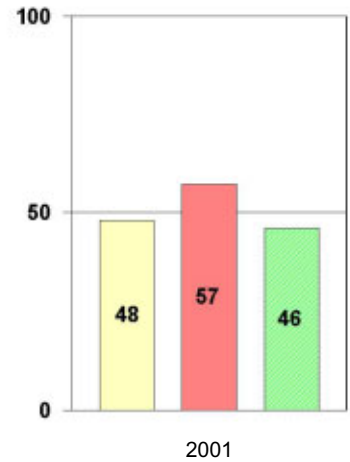
Science



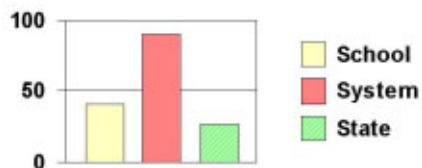
Social Science



Complete Battery



Legend



2000-2001 Georgia Public Education Report Card

Fulton County

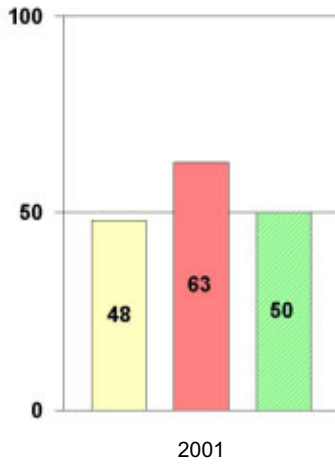
E. C. West Elementary School

NORM-REFERENCED ASSESSMENTS

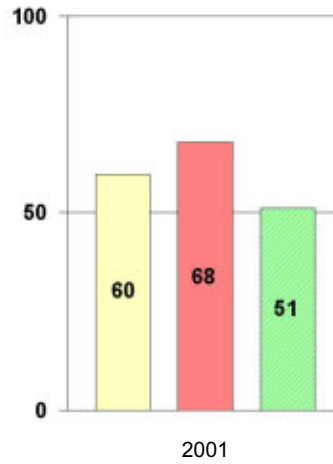
Stanford 9 Tests, Grade 5

Each chart reflects data for one year of testing.

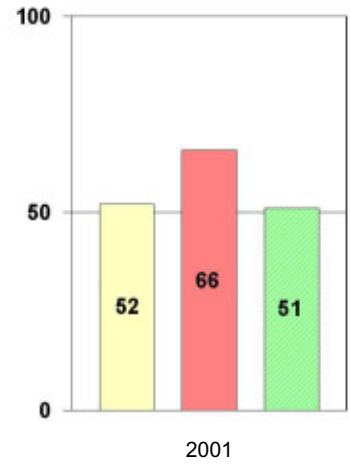
Total Reading



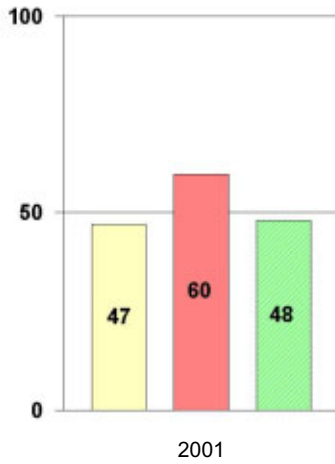
Total Mathematics



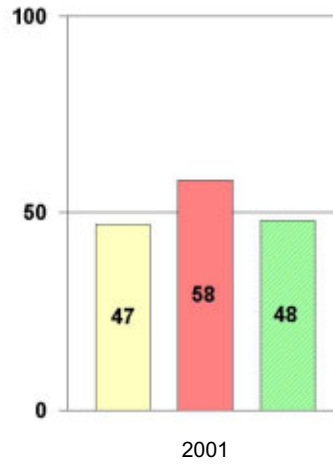
Language



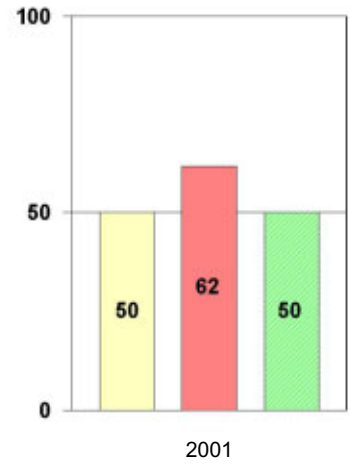
Science



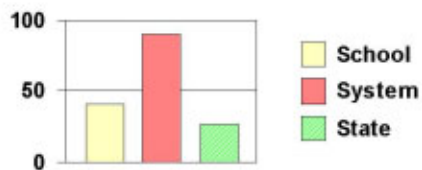
Social Science



Complete Battery



Legend



2000-2001 Georgia Public Education Report Card

Fulton County

E. C. West Elementary School

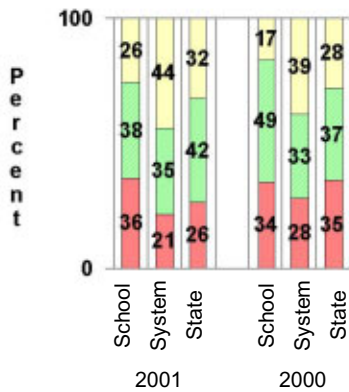
CRITERION-REFERENCED ASSESSMENTS

Criterion-Referenced Competency Tests (CRCTs)

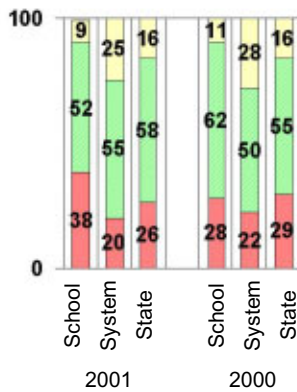
Percentage of Students Scoring in the Indicated Achievement Levels

Each chart reflects data for two years of testing.

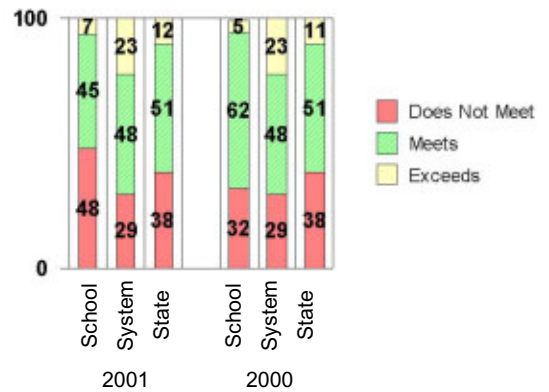
Grade 4 Reading



Grade 4 Language Arts



Grade 4 Mathematics



PERFORMANCE ASSESSMENTS

Grade 5 Writing Assessment

Percent at Developmental Stages:	2000-2001			1999-2000			1998-99		
	School	System	State	School	System	State	School	System	State
Stage 1: The Emerging Writer	0%	1%	1%	2%	1%	1%	0%	0%	1%
Stage 2: The Developing Writer	3%	2%	2%	3%	3%	2%	3%	2%	2%
Stage 3: The Focusing Writer	21%	14%	17%	19%	16%	19%	25%	14%	19%
Stage 4: The Experimenting Writer	51%	34%	42%	56%	38%	41%	52%	35%	41%
Stage 5: The Engaging Writer	22%	32%	29%	19%	29%	27%	12%	31%	27%
Stage 6: The Extending Writer	2%	17%	9%	2%	14%	9%	8%	18%	11%

2000-2001 Georgia Public Education Report Card

Fulton County

E. C. West Elementary School

CERTIFIED PERSONNEL DATA

		Administrators	Support Personnel	PK-12 Teachers
Positions	Number	3.37	3.52	31.92
	Average Contract Days	234.62	195.64	190.94
Personnel	Full-time	3	3	29
	Part-time	8	3	5
Gender	Male	4	1	6
	Female	7	5	28
Certificate Level	4 Yr Bachelor's	3	1	17
	5 Yr Master's	5	4	13
	6 Yr Specialist's	3	1	3
	7 Yr Doctoral	0	0	1
	Other *	0	0	0
Years Experience	<1	0	2	0
	1-10	3	1	12
	11-20	2	2	7
	21-30	5	0	12
	>30	1	1	3
	Average	18.09	14.00	17.12

* Includes One- and Two-Year Vocational Certificates.

ACCREDITATION DATA

Accredited by Southern Association of Colleges and Schools (SACS):
Elementary/Middle Commission

AWARDS/RECOGNITION DATA

Schools in Georgia may receive recognition in the following programs:

- Charter School
- Pay for Performance Program
- Georgia School of Excellence
- National Blue Ribbon School

E. C. West Elementary School did not receive recognition in any of these programs during the 2000-2001 school year.

For more information about these programs, contact your school principal or the school system central office.