

2000-2001 Georgia Public Education Report Card

Fulton County

Dunwoody Springs Elementary School - 6600401

Grade Range - PK-5

The Georgia Public Education Report Card is designed to assist systems and schools in educational improvement. This report card contains a variety of data elements. An explanation of the terms is provided as a companion to the report card data. Please refer to the definitions for the most effective use of the reported data.

STUDENT DATA

Total Enrollment, by Race/Ethnicity and Gender

| Total | Black | White | Hispanic | Asian | American Indian | Multi-Racial | Male | Female |
|----------|--------------|--------------|--------------|------------|-----------------|--------------|--------------|--------------|
| K-5: 719 | 282 39.2% | 226 31.4% | 134 18.6% | 26 3.6% | 0 0.0% | 51 7.1% | 353 49.1% | 366 50.9% |
| PK: 26 | 7 26.9% | 12 46.2% | 5 19.2% | 0 0.0% | 0 0.0% | 2 7.7% | 17 65.4% | 9 34.6% |

Enrollment in Selected Programs

| Program | Program Enrollment | % of Student Population |
|------------------------------------|--------------------|-------------------------|
| Gifted (Grades K-12) | 46 | 6.4% |
| Alternative Programs (Grades K-12) | 0 | 0.0% |

Enrollment in Compensatory Programs

| Program | Program Enrollment | % of Student Population |
|---|-------------------------------------|-------------------------|
| Special Education (Grades K-12) (PK) | 91 9 | 12.7% N/A |
| English to Speakers of Other Languages (ESOL) (Grades K-12) | 68 | 9.5% |
| Early Intervention Program (EIP) (Grades K-3) | 47 | 9.5% |
| Remedial Education (Grades 4-5, 9-12) | 45 | 20.0% |
| Title I (Grades K-12) | This School has no Title I Program. | |

Students Eligible to Receive Free/Reduced-price Lunches

| | Number | Percent |
|--------|--------|---------|
| School | 343 | 46.0% |
| System | 21,659 | 31.6% |

Dropout Rate *

| | Number | Percent |
|--------|--------|---------|
| School | N/A | N/A |
| System | N/A | N/A |

* - Dropouts are not reported for grades PK-5.

Retained Students, by Race/Ethnicity and Gender

| Total | Black | White | Hispanic | Asian | American Indian | Multi-Racial | Male | Female |
|-------|------------|------------|------------|-----------|-----------------|--------------|-------------|------------|
| 18 | 5 27.8% | 4 22.2% | 9 50.0% | 0 0.0% | 0 0.0% | 0 0.0% | 12 66.7% | 6 33.3% |

2000-2001 Georgia Public Education Report Card

Fulton County

Dunwoody Springs Elementary School

NORM-REFERENCED ASSESSMENTS

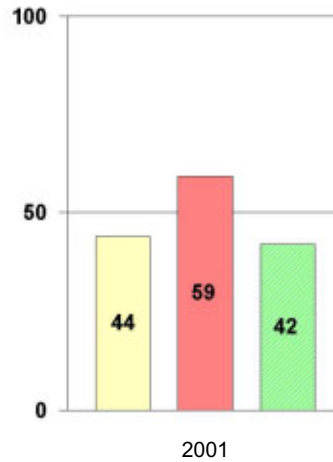
Stanford 9 Tests, Grade 3

Each chart reflects data for one year of testing.

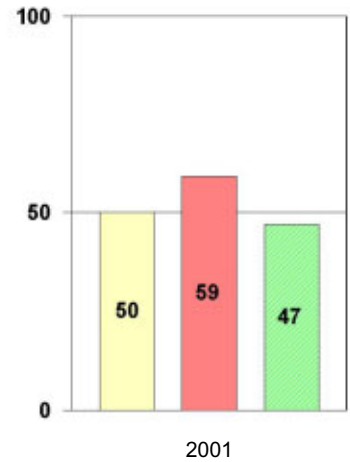
Total Reading



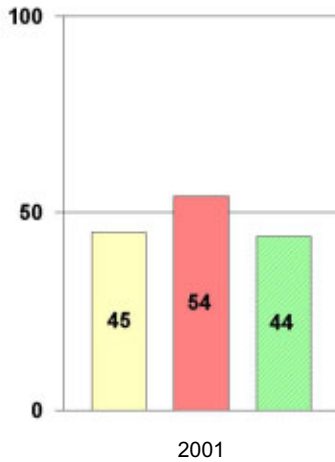
Total Mathematics



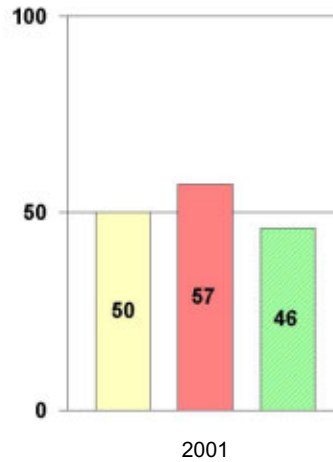
Language



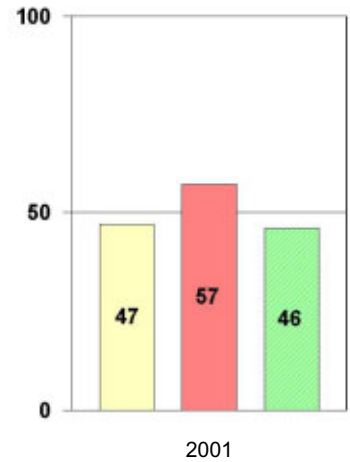
Science



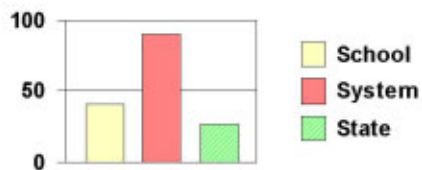
Social Science



Complete Battery



Legend



2000-2001 Georgia Public Education Report Card Fulton County

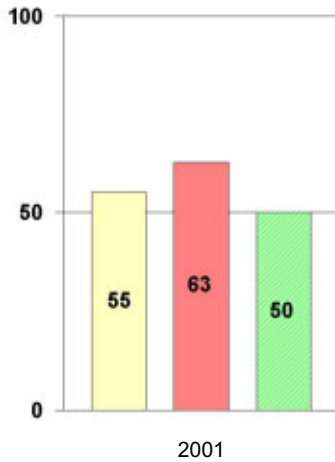
Dunwoody Springs Elementary School

NORM-REFERENCED ASSESSMENTS

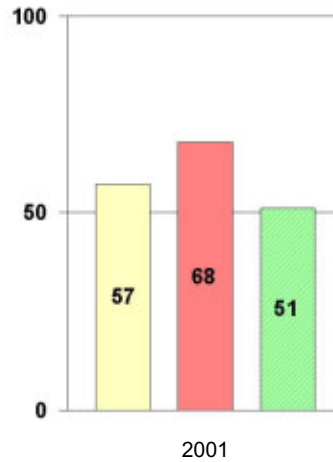
Stanford 9 Tests, Grade 5

Each chart reflects data for one year of testing.

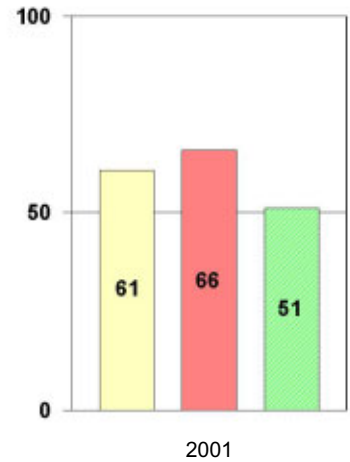
Total Reading



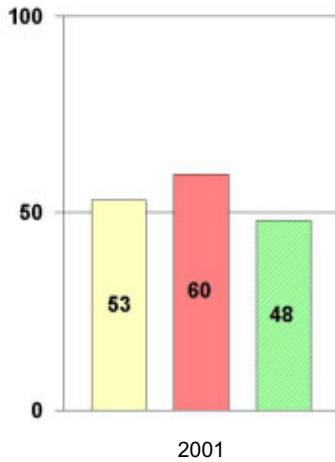
Total Mathematics



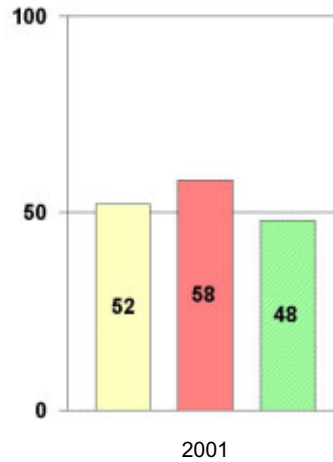
Language



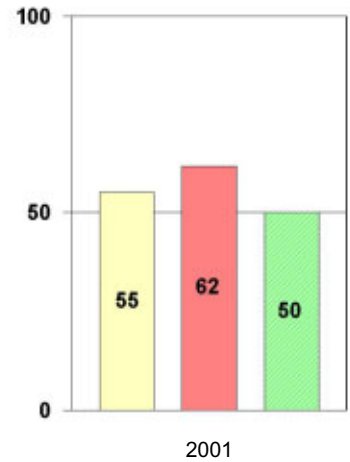
Science



Social Science



Complete Battery



Legend



2000-2001 Georgia Public Education Report Card

Fulton County

Dunwoody Springs Elementary School

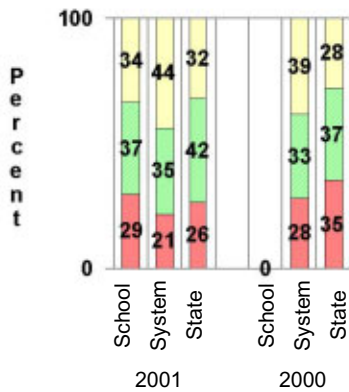
CRITERION-REFERENCED ASSESSMENTS

Criterion-Referenced Competency Tests (CRCTs)

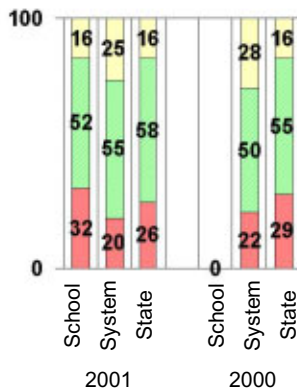
Percentage of Students Scoring in the Indicated Achievement Levels

Each chart reflects data for two years of testing.

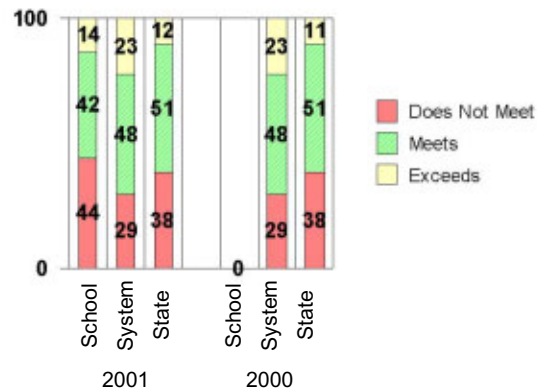
Grade 4 Reading



Grade 4 Language Arts



Grade 4 Mathematics



PERFORMANCE ASSESSMENTS

Grade 5 Writing Assessment

| Percent at Developmental Stages: | 2000-2001 | | | 1999-2000 | | | 1998-99 | | |
|--|-----------|--------|-------|-----------|--------|-------|---------|--------|-------|
| | School | System | State | School | System | State | School | System | State |
| Stage 1: The Emerging Writer | 2% | 1% | 1% | 0% | 1% | 1% | 0% | 0% | 1% |
| Stage 2: The Developing Writer | 1% | 2% | 2% | 0% | 3% | 2% | 0% | 2% | 2% |
| Stage 3: The Focusing Writer | 21% | 14% | 17% | 0% | 16% | 19% | 0% | 14% | 19% |
| Stage 4: The Experimenting Writer | 37% | 34% | 42% | 0% | 38% | 41% | 0% | 35% | 41% |
| Stage 5: The Engaging Writer | 31% | 32% | 29% | 0% | 29% | 27% | 0% | 31% | 27% |
| Stage 6: The Extending Writer | 7% | 17% | 9% | 0% | 14% | 9% | 0% | 18% | 11% |

2000-2001 Georgia Public Education Report Card

Fulton County

Dunwoody Springs Elementary School

CERTIFIED PERSONNEL DATA

| | | Administrators | Support Personnel | PK-12 Teachers |
|-------------------|-----------------------|----------------|-------------------|----------------|
| Positions | Number | 2.26 | 4.93 | 43.12 |
| | Average Contract Days | 234.44 | 194.66 | 190.35 |
| Personnel | Full-time | 2 | 3 | 41 |
| | Part-time | 6 | 8 | 5 |
| Gender | Male | 0 | 1 | 2 |
| | Female | 8 | 10 | 44 |
| Certificate Level | 4 Yr Bachelor's | 3 | 0 | 30 |
| | 5 Yr Master's | 2 | 7 | 13 |
| | 6 Yr Specialist's | 3 | 4 | 3 |
| | 7 Yr Doctoral | 0 | 0 | 0 |
| | Other * | 0 | 0 | 0 |
| Years Experience | <1 | 2 | 0 | 18 |
| | 1-10 | 3 | 7 | 17 |
| | 11-20 | 2 | 1 | 6 |
| | 21-30 | 1 | 3 | 5 |
| | >30 | 0 | 0 | 0 |
| | Average | 9.00 | 10.82 | 6.17 |

* Includes One- and Two-Year Vocational Certificates.

ACCREDITATION DATA

Accredited by Southern Association of Colleges and Schools (SACS):
Elementary/Middle Commission

AWARDS/RECOGNITION DATA

Schools in Georgia may receive recognition in the following programs:

- Charter School
- Pay for Performance Program
- Georgia School of Excellence
- National Blue Ribbon School

Dunwoody Springs Elementary School did not receive recognition in any of these programs during the 2000-2001 school year.

For more information about these programs, contact your school principal or the school system central office.