

2000-2001 Georgia Public Education Report Card

Fulton County

Dolvin Elementary School - 6600180

Grade Range - PK-5

The Georgia Public Education Report Card is designed to assist systems and schools in educational improvement. This report card contains a variety of data elements. An explanation of the terms is provided as a companion to the report card data. Please refer to the definitions for the most effective use of the reported data.

STUDENT DATA

Total Enrollment, by Race/Ethnicity and Gender

Total	Black	White	Hispanic	Asian	American Indian	Multi-Racial	Male	Female
K-5: 646	39 6.0%	463 71.7%	48 7.4%	73 11.3%	0 0.0%	23 3.6%	333 51.5%	313 48.5%
PK: 20	2 10.0%	11 55.0%	4 20.0%	2 10.0%	0 0.0%	1 5.0%	11 55.0%	9 45.0%

Enrollment in Selected Programs

Program	Program Enrollment	% of Student Population
Gifted (Grades K-12)	42	6.5%
Alternative Programs (Grades K-12)	0	0.0%

Enrollment in Compensatory Programs

Program	Program Enrollment	% of Student Population
Special Education (Grades K-12) (PK)	67 0	10.4% N/A
English to Speakers of Other Languages (ESOL) (Grades K-12)	54	8.4%
Early Intervention Program (EIP) (Grades K-3)	81	19.8%
Remedial Education (Grades 4-5, 9-12)	30	12.7%
Title I (Grades K-12)	This School has no Title I Program.	

Students Eligible to Receive Free/Reduced-price Lunches

	Number	Percent
School	46	6.9%
System	21,659	31.6%

Dropout Rate *

	Number	Percent
School	N/A	N/A
System	N/A	N/A

* - Dropouts are not reported for grades PK-5.

Retained Students, by Race/Ethnicity and Gender

Total	Black	White	Hispanic	Asian	American Indian	Multi-Racial	Male	Female
7	1 14.3%	5 71.4%	1 14.3%	0 0.0%	0 0.0%	0 0.0%	6 85.7%	1 14.3%

2000-2001 Georgia Public Education Report Card

Fulton County

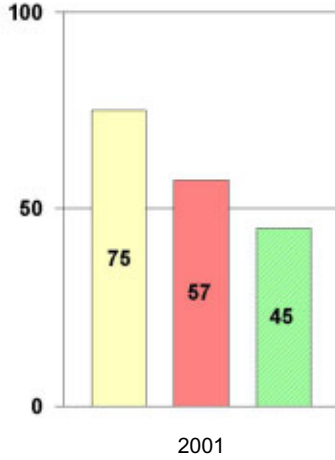
Dolvin Elementary School

NORM-REFERENCED ASSESSMENTS

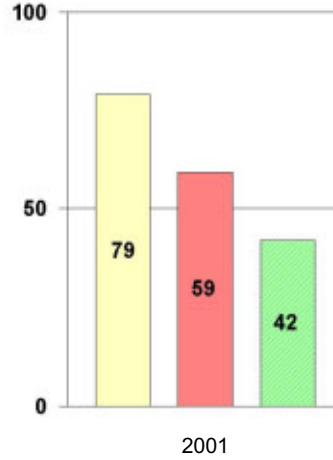
Stanford 9 Tests, Grade 3

Each chart reflects data for one year of testing.

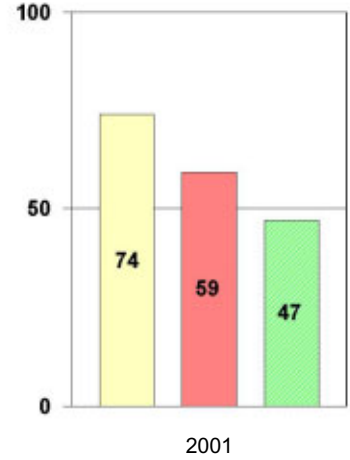
Total Reading



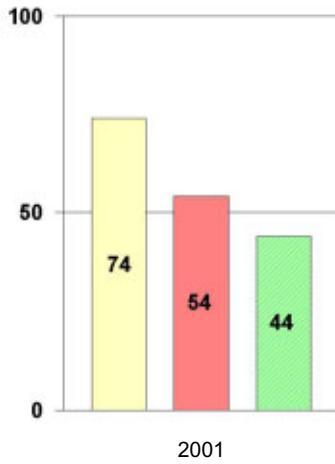
Total Mathematics



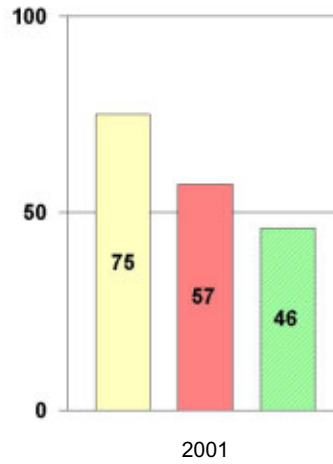
Language



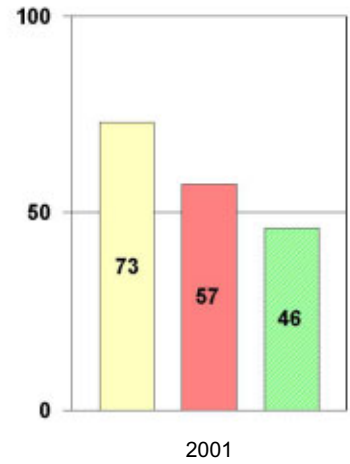
Science



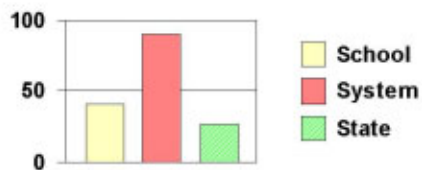
Social Science



Complete Battery



Legend



2000-2001 Georgia Public Education Report Card

Fulton County

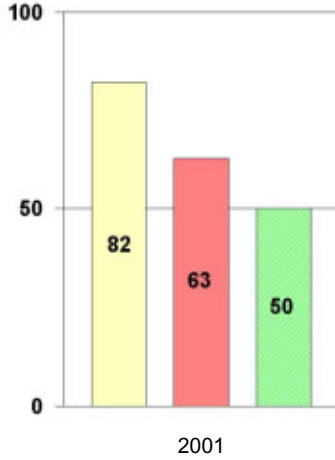
Dolvin Elementary School

NORM-REFERENCED ASSESSMENTS

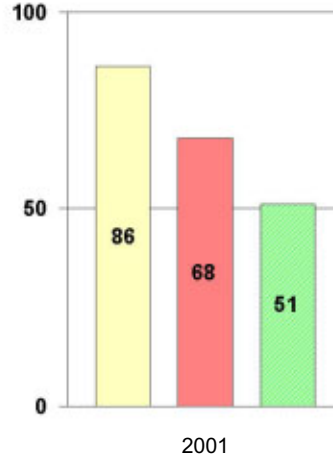
Stanford 9 Tests, Grade 5

Each chart reflects data for one year of testing.

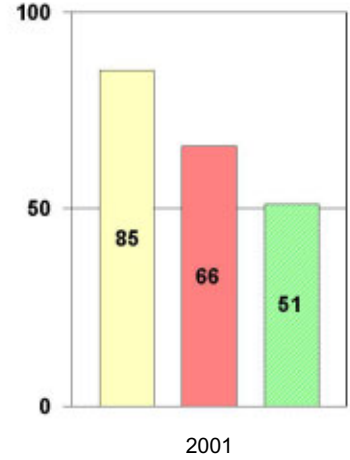
Total Reading



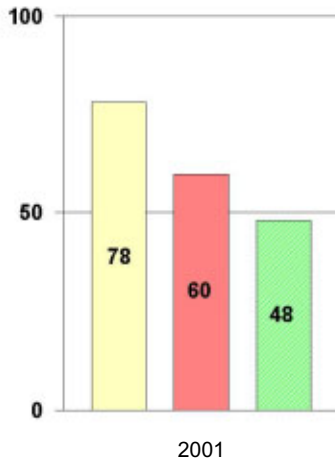
Total Mathematics



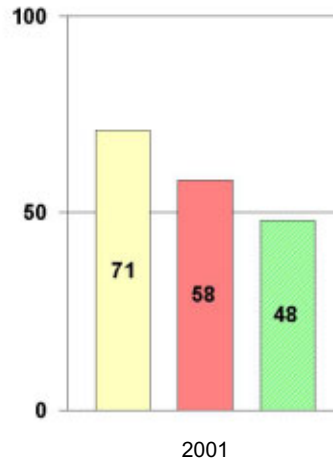
Language



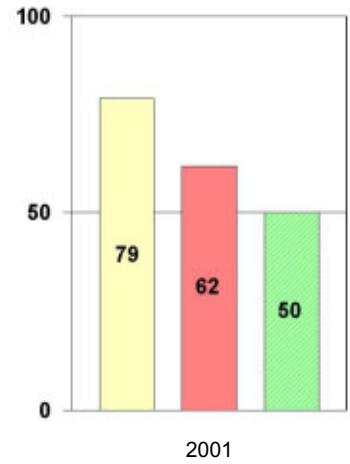
Science



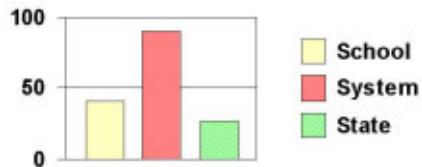
Social Science



Complete Battery



Legend



2000-2001 Georgia Public Education Report Card

Fulton County Dolvin Elementary School

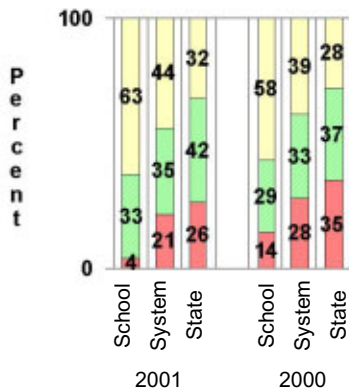
CRITERION-REFERENCED ASSESSMENTS

Criterion-Referenced Competency Tests (CRCTs)

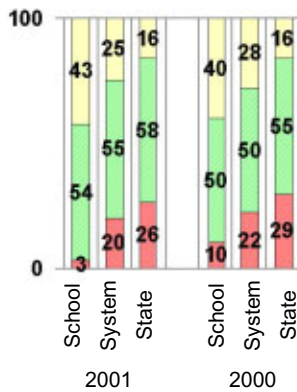
Percentage of Students Scoring in the Indicated Achievement Levels

Each chart reflects data for two years of testing.

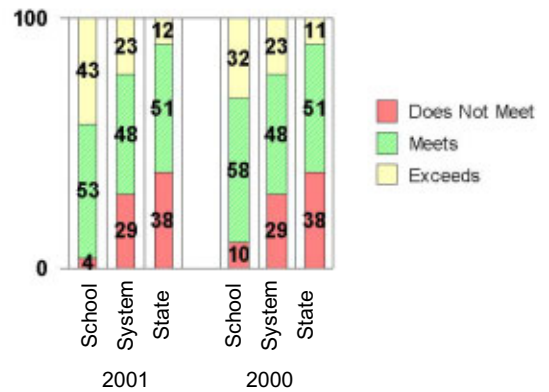
Grade 4 Reading



Grade 4 Language Arts



Grade 4 Mathematics



PERFORMANCE ASSESSMENTS

Grade 5 Writing Assessment

Percent at Developmental Stages:	2000-2001			1999-2000			1998-99		
	School	System	State	School	System	State	School	System	State
Stage 1: The Emerging Writer	0%	1%	1%	0%	1%	1%	0%	0%	1%
Stage 2: The Developing Writer	1%	2%	2%	0%	3%	2%	1%	2%	2%
Stage 3: The Focusing Writer	5%	14%	17%	7%	16%	19%	3%	14%	19%
Stage 4: The Experimenting Writer	36%	34%	42%	27%	38%	41%	25%	35%	41%
Stage 5: The Engaging Writer	39%	32%	29%	38%	29%	27%	42%	31%	27%
Stage 6: The Extending Writer	18%	17%	9%	29%	14%	9%	30%	18%	11%

2000-2001 Georgia Public Education Report Card

Fulton County

Dolvin Elementary School

CERTIFIED PERSONNEL DATA

		Administrators	Support Personnel	PK-12 Teachers
Positions	Number	2.32	3.16	46.59
	Average Contract Days	233.28	196.65	190.32
Personnel	Full-time	2	2	44
	Part-time	8	8	6
Gender	Male	0	0	2
	Female	10	10	48
Certificate Level	4 Yr Bachelor's	4	2	26
	5 Yr Master's	4	7	22
	6 Yr Specialist's	2	1	2
	7 Yr Doctoral	0	0	0
	Other *	0	0	0
Years Experience	<1	0	1	4
	1-10	3	3	24
	11-20	3	3	15
	21-30	3	3	7
	>30	1	0	0
	Average	17.00	13.50	10.12

* Includes One- and Two-Year Vocational Certificates.

ACCREDITATION DATA

Accredited by Southern Association of Colleges and Schools (SACS):
Elementary/Middle Commission

AWARDS/RECOGNITION DATA

Schools in Georgia may receive recognition in the following programs:

- Charter School
- Pay for Performance Program
- Georgia School of Excellence
- National Blue Ribbon School

Dolvin Elementary School did not receive recognition in any of these programs during the 2000-2001 school year.

For more information about these programs, contact your school principal or the school system central office.