

2000-2001 Georgia Public Education Report Card

Fulton County

Crabapple Middle School - 6600184

Grade Range - 6-8

The Georgia Public Education Report Card is designed to assist systems and schools in educational improvement. This report card contains a variety of data elements. An explanation of the terms is provided as a companion to the report card data. Please refer to the definitions for the most effective use of the reported data.

STUDENT DATA

Total Enrollment, by Race/Ethnicity and Gender

| Total | Black | White | Hispanic | Asian | American Indian | Multi-Racial | Male | Female |
|------------|--------------|--------------|-------------|------------|-----------------|--------------|--------------|--------------|
| 6-8: 1,184 | 232 19.6% | 753 63.6% | 114 9.6% | 47 4.0% | 3 0.3% | 35 3.0% | 610 51.5% | 574 48.5% |

Enrollment in Selected Programs

| Program | Program Enrollment | % of Student Population |
|------------------------------------|--------------------|-------------------------|
| Gifted (Grades K-12) | 376 | 31.8% |
| Vocational Labs (Grades 9-12) | 0 | 0.0% |
| Alternative Programs (Grades K-12) | 1 | 0.1% |

Enrollment in Compensatory Programs

| Program | Program Enrollment | % of Student Population |
|---|-------------------------------------|-------------------------|
| Special Education (Grades K-12) (PK) | 133 0 | 11.2% N/A |
| English to Speakers of Other Languages (ESOL) (Grades K-12) | 89 | 7.5% |
| Title I (Grades K-12) | This School has no Title I Program. | |

Students Eligible to Receive Free/Reduced-price Lunches

| | Number | Percent |
|--------|--------|---------|
| School | 218 | 18.4% |
| System | 21,659 | 31.6% |

Dropout Rate for Grades 6-8

| | Number | Percent |
|--------|--------|---------|
| School | 0 | 0.0% |
| System | 44 | 0.2% |

Retained Students, by Race/Ethnicity and Gender

| Total | Black | White | Hispanic | Asian | American Indian | Multi-Racial | Male | Female |
|-------|------------|------------|------------|-----------|-----------------|--------------|------------|------------|
| 10 | 4 40.0% | 4 40.0% | 1 10.0% | 0 0.0% | 0 0.0% | 1 10.0% | 8 80.0% | 2 20.0% |

2000-2001 Georgia Public Education Report Card

Fulton County

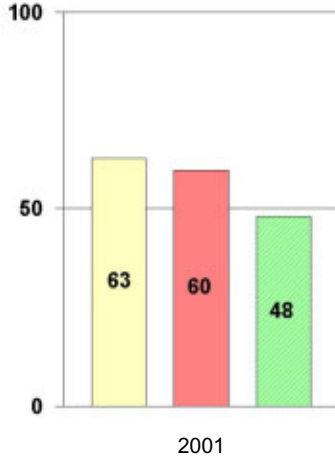
Crabapple Middle School

NORM-REFERENCED ASSESSMENTS

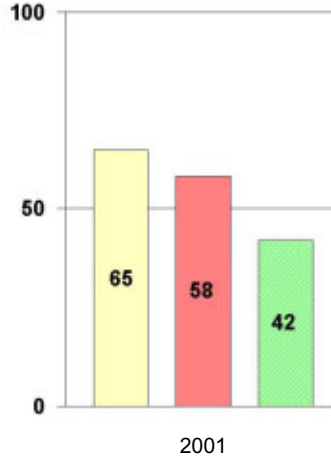
Stanford 9 Tests, Grade 8

Each chart reflects data for one year of testing.

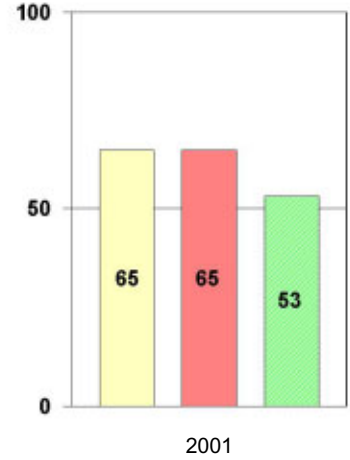
Total Reading



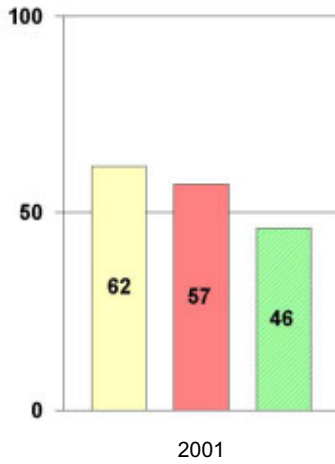
Total Mathematics



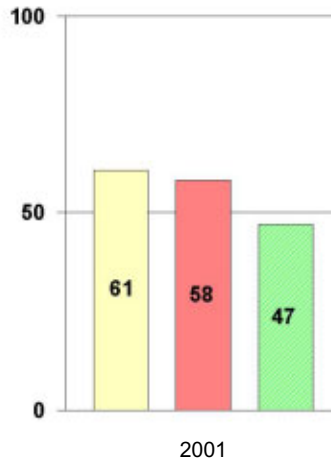
Language



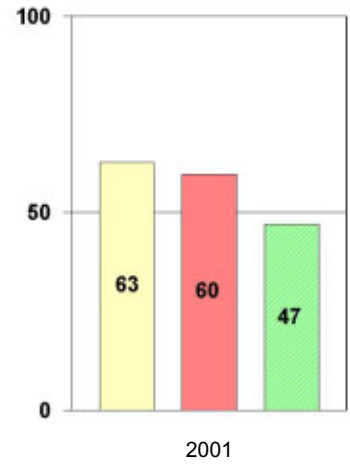
Science



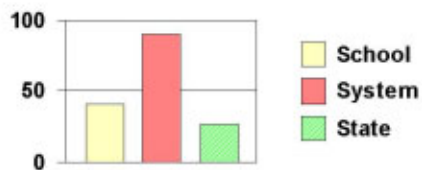
Social Science



Complete Battery



Legend



2000-2001 Georgia Public Education Report Card

Fulton County

Crabapple Middle School

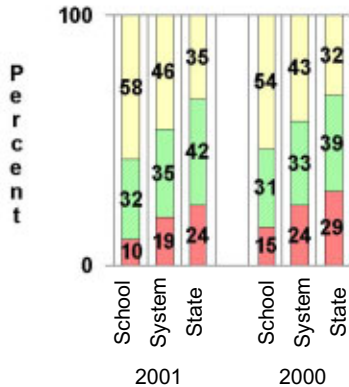
CRITERION-REFERENCED ASSESSMENTS

Criterion-Referenced Competency Tests (CRCTs)

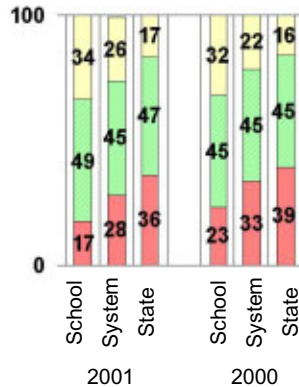
Percentage of Students Scoring in the Indicated Achievement Levels

Each chart reflects data for two years of testing.

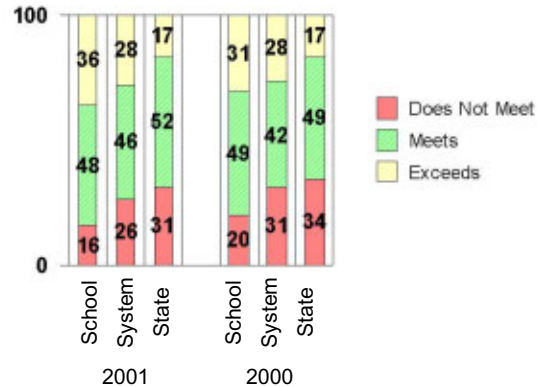
Grade 6 Reading



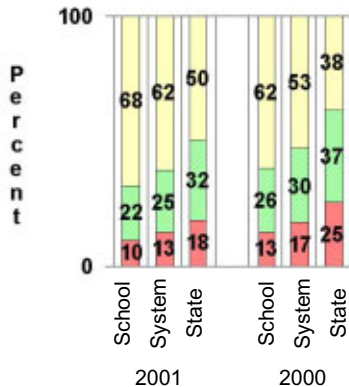
Grade 6 Language Arts



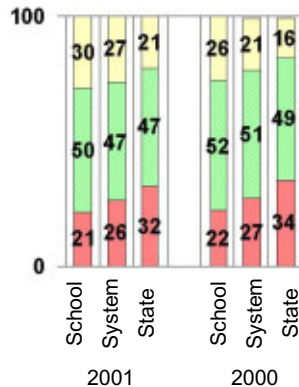
Grade 6 Mathematics



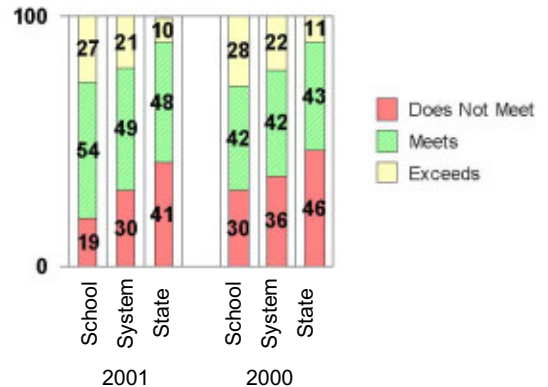
Grade 8 Reading



Grade 8 Language Arts



Grade 8 Mathematics



PERFORMANCE ASSESSMENTS

Grade 8 Writing Assessment

| | | 2000-2001 | | | 1999-2000 | | |
|--|-----------|-----------|--------|-------|-----------|--------|-------|
| Categories of Scaled Scores: | | School | System | State | School | System | State |
| Not on Target | (300-348) | 9% | 12% | 17% | 12% | 19% | 28% |
| On Target | (349-367) | 65% | 67% | 72% | 53% | 59% | 58% |
| Exceeds Target | (368-400) | 26% | 20% | 12% | 34% | 22% | 13% |
| Average Scaled Score: (Range 300-400) | | 362 | 360 | 357 | 362 | 359 | 354 |

2000-2001 Georgia Public Education Report Card

Fulton County

Crabapple Middle School

CERTIFIED PERSONNEL DATA

| | | Administrators | Support Personnel | PK-12 Teachers |
|-------------------|-----------------------|----------------|-------------------|----------------|
| Positions | Number | 4.89 | 8.08 | 84.49 |
| | Average Contract Days | 230.87 | 198.53 | 190.00 |
| Personnel | Full-time | 4 | 6 | 84 |
| | Part-time | 16 | 12 | 1 |
| Gender | Male | 4 | 4 | 14 |
| | Female | 16 | 14 | 71 |
| Certificate Level | 4 Yr Bachelor's | 7 | 6 | 44 |
| | 5 Yr Master's | 9 | 11 | 38 |
| | 6 Yr Specialist's | 3 | 0 | 3 |
| | 7 Yr Doctoral | 1 | 1 | 0 |
| | Other * | 0 | 0 | 0 |
| Years Experience | <1 | 4 | 1 | 9 |
| | 1-10 | 5 | 7 | 39 |
| | 11-20 | 8 | 4 | 24 |
| | 21-30 | 3 | 5 | 10 |
| | >30 | 0 | 1 | 3 |
| | Average | 11.30 | 14.39 | 10.75 |

* Includes One- and Two-Year Vocational Certificates.

ACCREDITATION DATA

Accredited by Southern Association of Colleges and Schools (SACS):
Elementary/Middle Commission

AWARDS/RECOGNITION DATA

Schools in Georgia may receive recognition in the following programs:

- Charter School
- Pay for Performance Program
- Georgia School of Excellence
- National Blue Ribbon School

Crabapple Middle School did not receive recognition in any of these programs during the 2000-2001 school year.

For more information about these programs, contact your school principal or the school system central office.