

2000-2001 Georgia Public Education Report Card

Fulton County

College Park Elementary School - 6600181

Grade Range - PK-5

The Georgia Public Education Report Card is designed to assist systems and schools in educational improvement. This report card contains a variety of data elements. An explanation of the terms is provided as a companion to the report card data. Please refer to the definitions for the most effective use of the reported data.

STUDENT DATA

Total Enrollment, by Race/Ethnicity and Gender

Total	Black	White	Hispanic	Asian	American Indian	Multi-Racial	Male	Female
K-5: 472	395 83.7%	0 0.0%	72 15.3%	1 0.2%	0 0.0%	4 0.8%	240 50.8%	232 49.2%
PK: 38	31 81.6%	0 0.0%	7 18.4%	0 0.0%	0 0.0%	0 0.0%	18 47.4%	20 52.6%

Enrollment in Selected Programs

Program	Program Enrollment	% of Student Population
Gifted (Grades K-12)	6	1.3%
Alternative Programs (Grades K-12)	0	0.0%

Enrollment in Compensatory Programs

Program	Program Enrollment	% of Student Population
Special Education (Grades K-12) (PK)	56 1	11.9% N/A
English to Speakers of Other Languages (ESOL) (Grades K-12)	29	6.1%
Early Intervention Program (EIP) (Grades K-3)	114	33.7%
Remedial Education (Grades 4-5, 9-12)	43	32.1%
Title I (Grades K-12)	This School has a Schoolwide Title I Program.	

Students Eligible to Receive Free/Reduced-price Lunches

	Number	Percent
School	501	98.2%
System	21,659	31.6%

Dropout Rate *

	Number	Percent
School	N/A	N/A
System	N/A	N/A

* - Dropouts are not reported for grades PK-5.

Retained Students, by Race/Ethnicity and Gender

Total	Black	White	Hispanic	Asian	American Indian	Multi-Racial	Male	Female
6	4 66.7%	0 0.0%	2 33.3%	0 0.0%	0 0.0%	0 0.0%	5 83.3%	1 16.7%

2000-2001 Georgia Public Education Report Card

Fulton County

College Park Elementary School

NORM-REFERENCED ASSESSMENTS

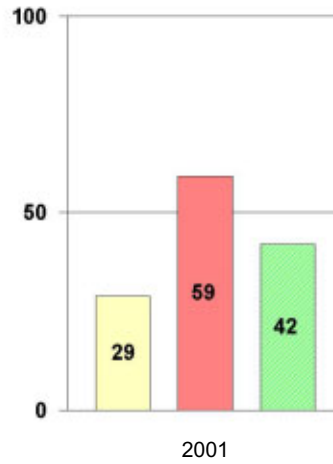
Stanford 9 Tests, Grade 3

Each chart reflects data for one year of testing.

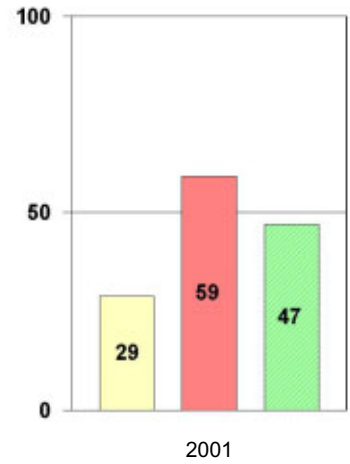
Total Reading



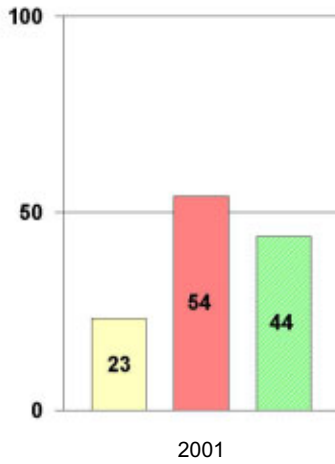
Total Mathematics



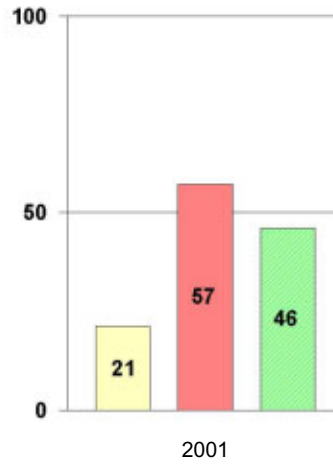
Language



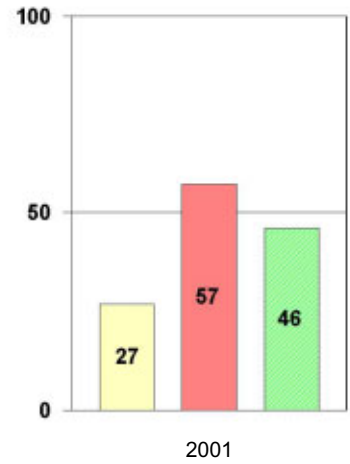
Science



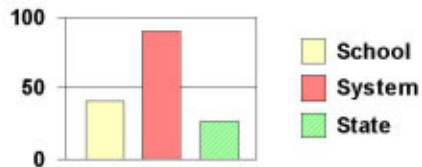
Social Science



Complete Battery



Legend



2000-2001 Georgia Public Education Report Card

Fulton County

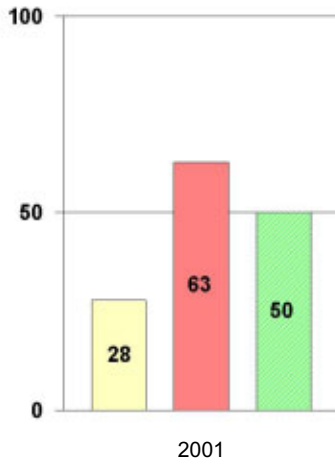
College Park Elementary School

NORM-REFERENCED ASSESSMENTS

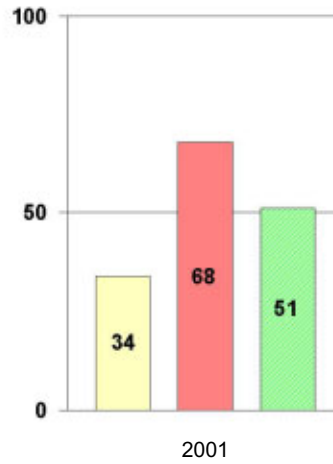
Stanford 9 Tests, Grade 5

Each chart reflects data for one year of testing.

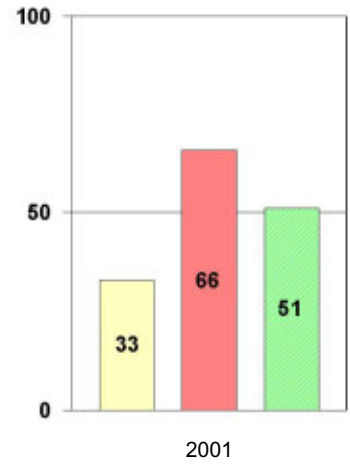
Total Reading



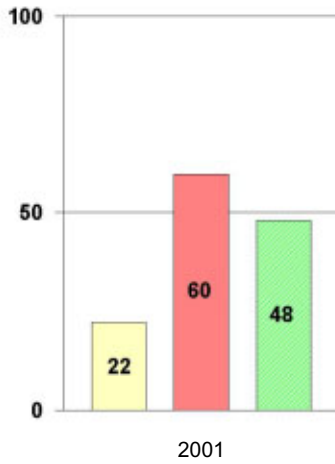
Total Mathematics



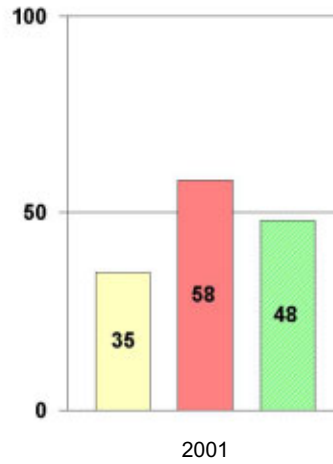
Language



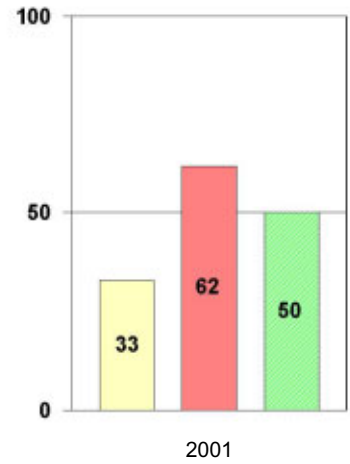
Science



Social Science



Complete Battery



Legend



2000-2001 Georgia Public Education Report Card

Fulton County College Park Elementary School

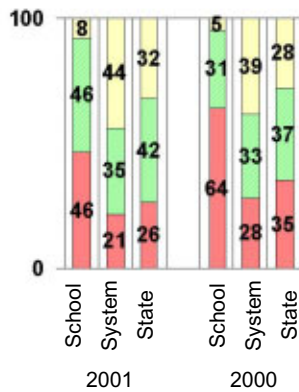
CRITERION-REFERENCED ASSESSMENTS

Criterion-Referenced Competency Tests (CRCTs)

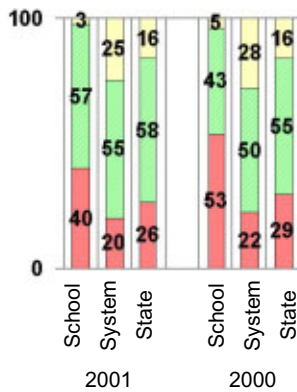
Percentage of Students Scoring in the Indicated Achievement Levels

Each chart reflects data for two years of testing.

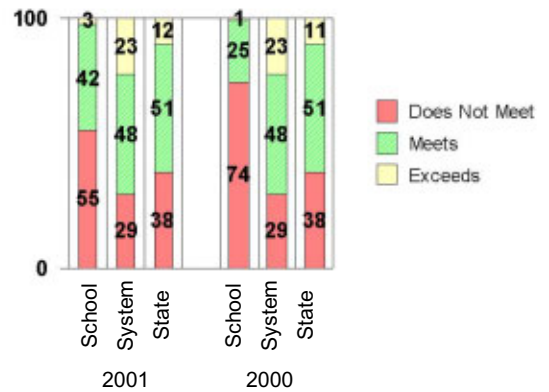
Grade 4 Reading



Grade 4 Language Arts



Grade 4 Mathematics



PERFORMANCE ASSESSMENTS

Grade 5 Writing Assessment

Percent at Developmental Stages:	2000-2001			1999-2000			1998-99		
	School	System	State	School	System	State	School	System	State
Stage 1: The Emerging Writer	3%	1%	1%	0%	1%	1%	0%	0%	1%
Stage 2: The Developing Writer	8%	2%	2%	5%	3%	2%	6%	2%	2%
Stage 3: The Focusing Writer	27%	14%	17%	19%	16%	19%	25%	14%	19%
Stage 4: The Experimenting Writer	38%	34%	42%	48%	38%	41%	43%	35%	41%
Stage 5: The Engaging Writer	23%	32%	29%	24%	29%	27%	18%	31%	27%
Stage 6: The Extending Writer	1%	17%	9%	4%	14%	9%	9%	18%	11%

2000-2001 Georgia Public Education Report Card

Fulton County

College Park Elementary School

CERTIFIED PERSONNEL DATA

		Administrators	Support Personnel	PK-12 Teachers
Positions	Number	2.27	5.63	39.44
	Average Contract Days	233.99	197.99	190.76
Personnel	Full-time	2	4	39
	Part-time	8	5	2
Gender	Male	1	1	4
	Female	9	8	37
Certificate Level	4 Yr Bachelor's	5	0	26
	5 Yr Master's	2	4	15
	6 Yr Specialist's	2	5	0
	7 Yr Doctoral	1	0	0
	Other *	0	0	0
Years Experience	<1	0	0	0
	1-10	1	2	14
	11-20	4	1	17
	21-30	4	5	8
	>30	1	1	2
	Average	20.60	20.22	15.07

* Includes One- and Two-Year Vocational Certificates.

ACCREDITATION DATA

Accredited by Southern Association of Colleges and Schools (SACS):
Elementary/Middle Commission

AWARDS/RECOGNITION DATA

Schools in Georgia may receive recognition in the following programs:

- Charter School
- Pay for Performance Program
- Georgia School of Excellence
- National Blue Ribbon School

College Park Elementary School did not receive recognition in any of these programs during the 2000-2001 school year.

For more information about these programs, contact your school principal or the school system central office.