

2000-2001 Georgia Public Education Report Card

Fulton County

Camp Creek Middle School - 6600186

Grade Range - 6-8

The Georgia Public Education Report Card is designed to assist systems and schools in educational improvement. This report card contains a variety of data elements. An explanation of the terms is provided as a companion to the report card data. Please refer to the definitions for the most effective use of the reported data.

STUDENT DATA

Total Enrollment, by Race/Ethnicity and Gender

Total		Black	White	Hispanic	Asian	American Indian	Multi-Racial	Male	Female
6-8:	1,041	1,018	10	4	0	0	9	543	498
		97.8%	1.0%	0.4%	0.0%	0.0%	0.9%	52.2%	47.8%

Enrollment in Selected Programs

Program	Program Enrollment	% of Student Population
Gifted (Grades K-12)	50	4.8%
Vocational Labs (Grades 9-12)	0	0.0%
Alternative Programs (Grades K-12)	5	0.5%

Enrollment in Compensatory Programs

Program	Program Enrollment	% of Student Population
Special Education (Grades K-12) (PK)	164 0	15.8% N/A
English to Speakers of Other Languages (ESOL) (Grades K-12)	0	0.0%
Title I (Grades K-12) This School has a Schoolwide Title I Program.		

Students Eligible to Receive Free/Reduced-price Lunches

	Number	Percent
School	690	66.3%
System	21,659	31.6%

Dropout Rate for Grades 6-8

	Number	Percent
School	23	1.8%
System	44	0.2%

Retained Students, by Race/Ethnicity and Gender

Total	Black	White	Hispanic	Asian	American Indian	Multi-Racial	Male	Female
79	77	0	0	0	0	2	50	29
	97.5%	0.0%	0.0%	0.0%	0.0%	2.5%	63.3%	36.7%

2000-2001 Georgia Public Education Report Card

Fulton County

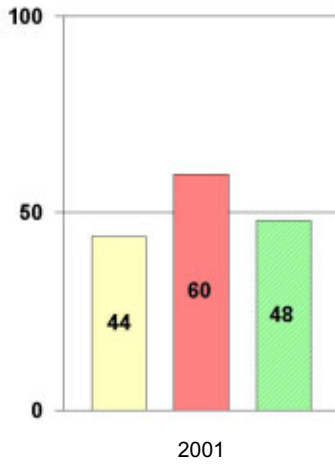
Camp Creek Middle School

NORM-REFERENCED ASSESSMENTS

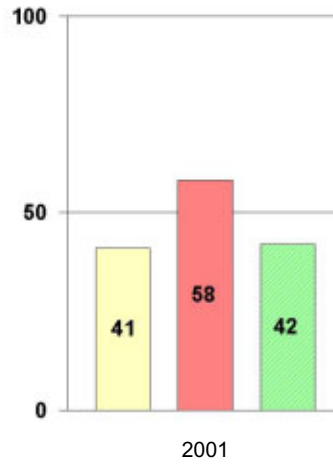
Stanford 9 Tests, Grade 8

Each chart reflects data for one year of testing.

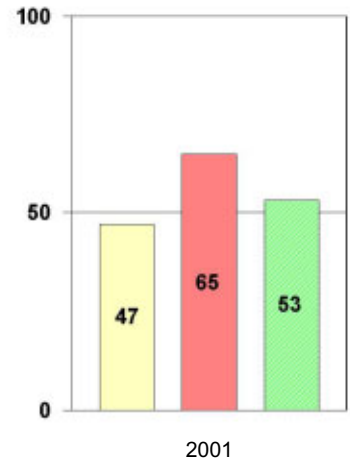
Total Reading



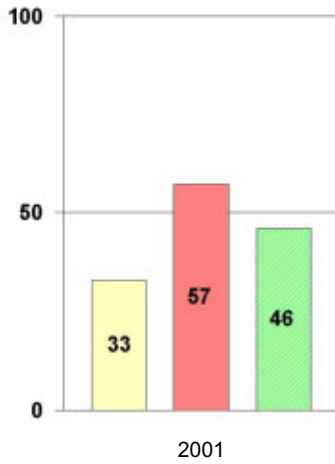
Total Mathematics



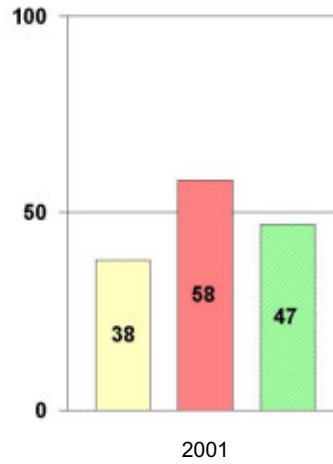
Language



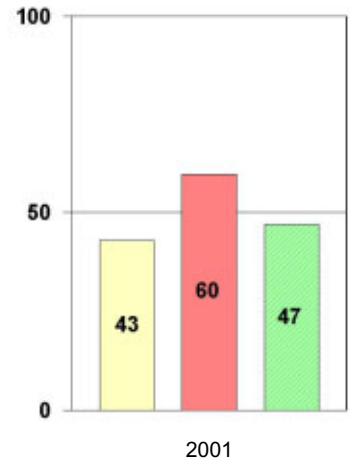
Science



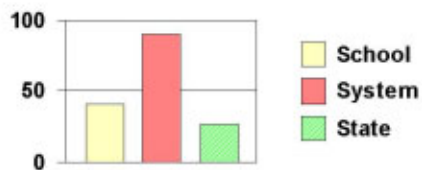
Social Science



Complete Battery



Legend



2000-2001 Georgia Public Education Report Card

Fulton County

Camp Creek Middle School

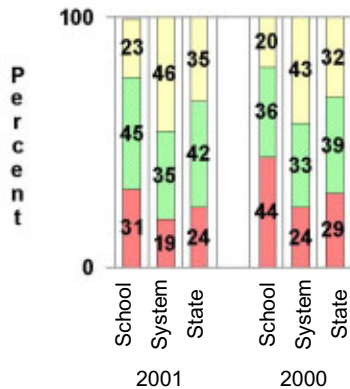
CRITERION-REFERENCED ASSESSMENTS

Criterion-Referenced Competency Tests (CRCTs)

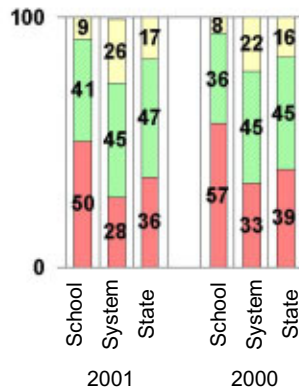
Percentage of Students Scoring in the Indicated Achievement Levels

Each chart reflects data for two years of testing.

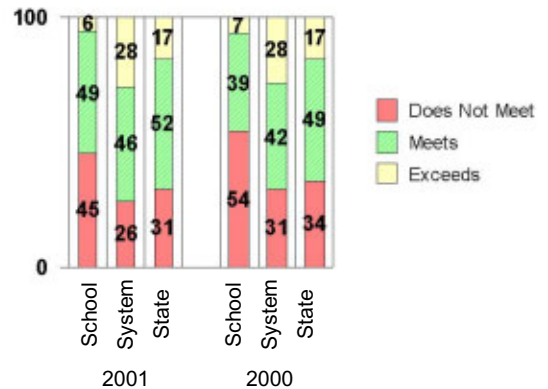
Grade 6 Reading



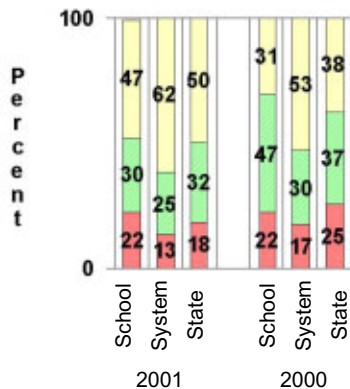
Grade 6 Language Arts



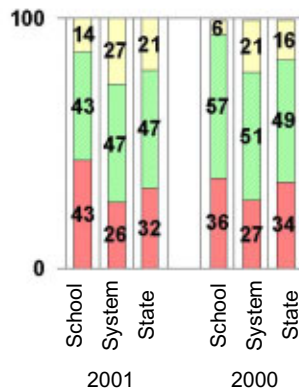
Grade 6 Mathematics



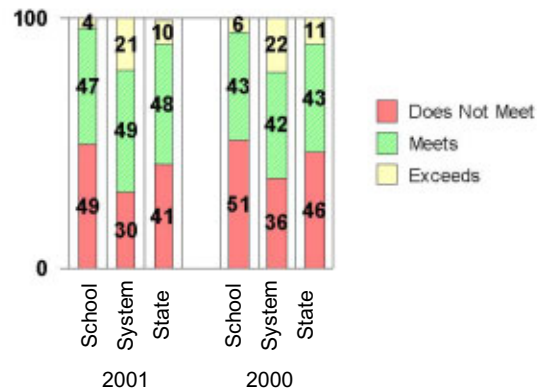
Grade 8 Reading



Grade 8 Language Arts



Grade 8 Mathematics



PERFORMANCE ASSESSMENTS

Grade 8 Writing Assessment

		2000-2001			1999-2000		
Categories of Scaled Scores:		School	System	State	School	System	State
Not on Target	(300-348)	16%	12%	17%	22%	19%	28%
On Target	(349-367)	71%	67%	72%	68%	59%	58%
Exceeds Target	(368-400)	12%	20%	12%	10%	22%	13%
Average Scaled Score: (Range 300-400)		357	360	357	355	359	354

2000-2001 Georgia Public Education Report Card

Fulton County

Camp Creek Middle School

CERTIFIED PERSONNEL DATA

		Administrators	Support Personnel	PK-12 Teachers
Positions	Number	5.90	9.63	69.54
	Average Contract Days	232.41	195.61	190.07
Personnel	Full-time	5	7	68
	Part-time	16	15	4
Gender	Male	7	7	16
	Female	14	15	56
Certificate Level	4 Yr Bachelor's	10	7	42
	5 Yr Master's	6	11	25
	6 Yr Specialist's	4	4	5
	7 Yr Doctoral	1	0	0
	Other *	0	0	0
Years Experience	<1	1	2	7
	1-10	12	8	43
	11-20	4	5	11
	21-30	3	7	10
	>30	1	0	1
	Average	10.05	13.23	8.99

* Includes One- and Two-Year Vocational Certificates.

ACCREDITATION DATA

Accredited by Southern Association of Colleges and Schools (SACS):
Elementary/Middle Commission

AWARDS/RECOGNITION DATA

Schools in Georgia may receive recognition in the following programs:

- Charter School
- Pay for Performance Program
- Georgia School of Excellence
- National Blue Ribbon School

Camp Creek Middle School did not receive recognition in any of these programs during the 2000-2001 school year.

For more information about these programs, contact your school principal or the school system central office.