

# 2000-2001 Georgia Public Education Report Card

## Fulton County

### Campbell Elementary School - 6602070

Grade Range - PK-5

The Georgia Public Education Report Card is designed to assist systems and schools in educational improvement. This report card contains a variety of data elements. An explanation of the terms is provided as a companion to the report card data. Please refer to the definitions for the most effective use of the reported data.

#### STUDENT DATA

##### Total Enrollment, by Race/Ethnicity and Gender

| Total |     | Black        | White        | Hispanic    | Asian     | American Indian | Multi-Racial | Male         | Female       |
|-------|-----|--------------|--------------|-------------|-----------|-----------------|--------------|--------------|--------------|
| K-5:  | 604 | 361<br>59.8% | 121<br>20.0% | 95<br>15.7% | 4<br>0.7% | 0<br>0.0%       | 23<br>3.8%   | 303<br>50.2% | 301<br>49.8% |
| PK:   | 69  | 41<br>59.4%  | 4<br>5.8%    | 20<br>29.0% | 1<br>1.4% | 0<br>0.0%       | 3<br>4.3%    | 37<br>53.6%  | 32<br>46.4%  |

##### Enrollment in Selected Programs

| Program                               | Program Enrollment | % of Student Population |
|---------------------------------------|--------------------|-------------------------|
| Gifted<br>(Grades K-12)               | 6                  | 1.0%                    |
| Alternative Programs<br>(Grades K-12) | 0                  | 0.0%                    |

##### Enrollment in Compensatory Programs

| Program   | Program Enrollment                            | % of Student Population |
|---|---|-------------------------|
| Special Education<br>(Grades K-12)<br>(PK)                        | 91<br>2                                       | 15.1%<br>N/A            |
| English to Speakers of<br>Other Languages (ESOL)<br>(Grades K-12) | 47  | 7.8%                    |
| Early Intervention Program (EIP)<br>(Grades K-3)                  | 106   | 27.0%                   |
| Remedial Education<br>(Grades 4-5, 9-12)                          | 72  | 34.1%                   |
| Title I (Grades K-12)   | This School has a Schoolwide Title I Program. |                         |

##### Students Eligible to Receive Free/Reduced-price Lunches

|        | Number | Percent |
|--------|--------|---------|
| School | 481    | 71.5%   |
| System | 21,659 | 31.6%   |

##### Dropout Rate \*

|        | Number | Percent |
|--------|--------|---------|
| School | N/A    | N/A     |
| System | N/A    | N/A     |

\* - Dropouts are not reported for grades PK-5.

##### Retained Students, by Race/Ethnicity and Gender

| Total | Black      | White      | Hispanic  | Asian     | American Indian | Multi-Racial | Male      | Female      |
|-------|------------|------------|-----------|-----------|-----------------|--------------|-----------|-------------|
| 3     | 2<br>66.7% | 1<br>33.3% | 0<br>0.0% | 0<br>0.0% | 0<br>0.0%       | 0<br>0.0%    | 0<br>0.0% | 3<br>100.0% |

# 2000-2001 Georgia Public Education Report Card

## Fulton County

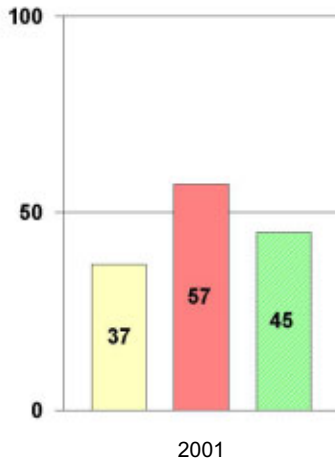
### Campbell Elementary School

#### NORM-REFERENCED ASSESSMENTS

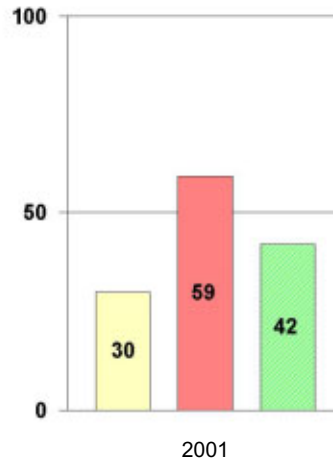
##### Stanford 9 Tests, Grade 3

Each chart reflects data for one year of testing.

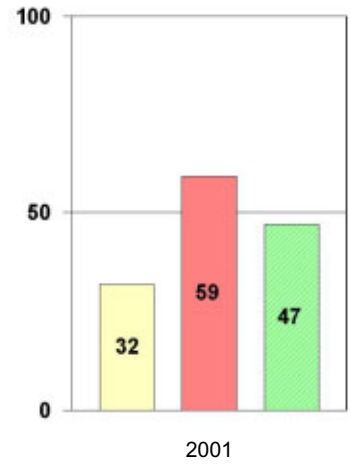
###### Total Reading



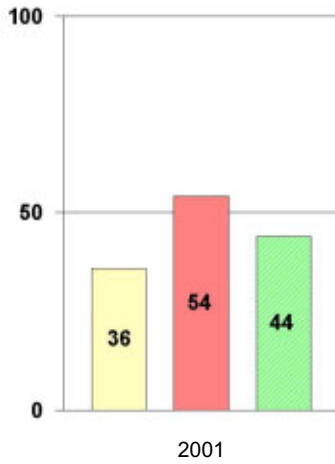
###### Total Mathematics



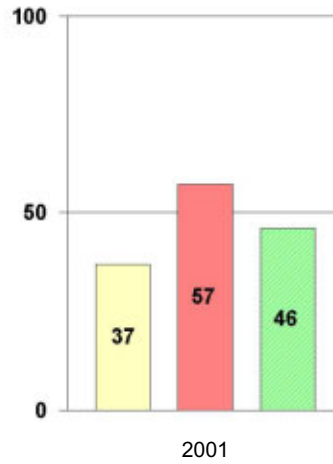
###### Language



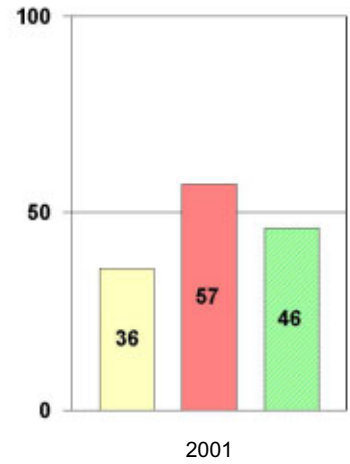
###### Science



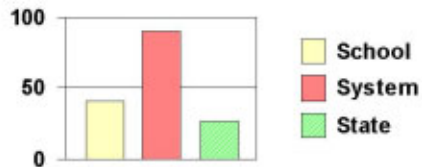
###### Social Science



###### Complete Battery



#### Legend



# 2000-2001 Georgia Public Education Report Card Fulton County

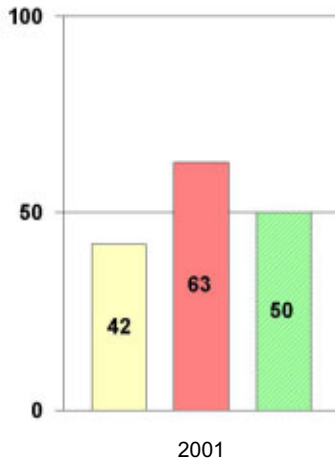
## Campbell Elementary School

### NORM-REFERENCED ASSESSMENTS

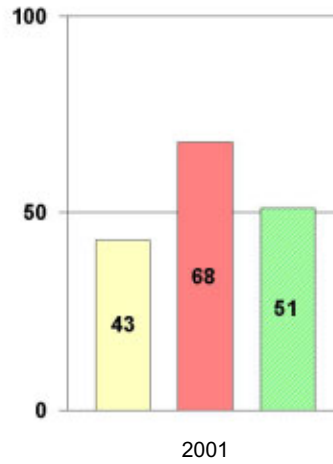
#### Stanford 9 Tests, Grade 5

Each chart reflects data for one year of testing.

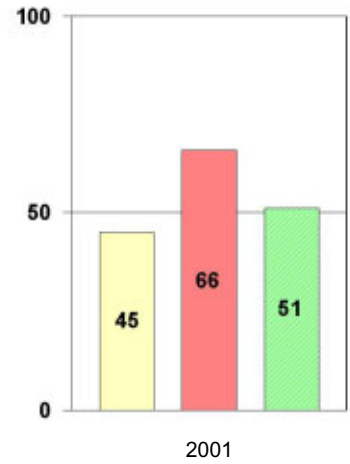
**Total Reading**



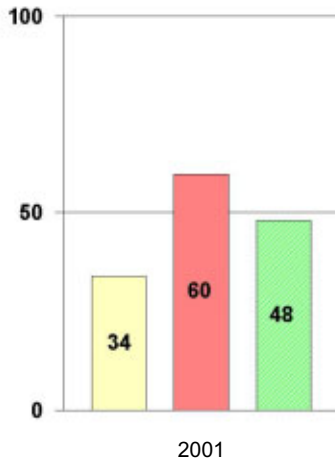
**Total Mathematics**



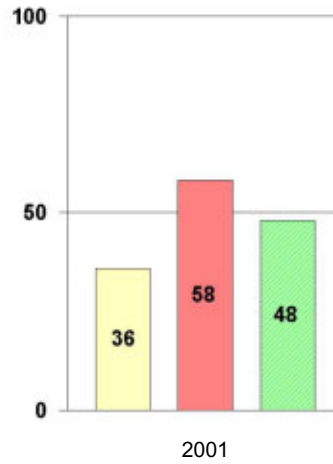
**Language**



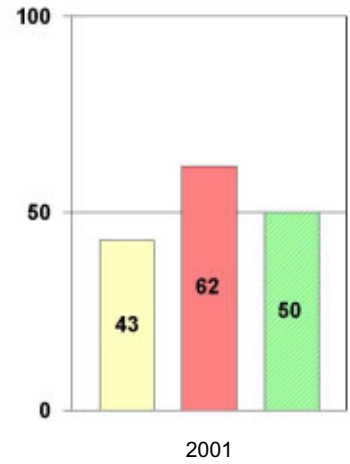
**Science**



**Social Science**



**Complete Battery**



#### Legend



# 2000-2001 Georgia Public Education Report Card

## Fulton County Campbell Elementary School

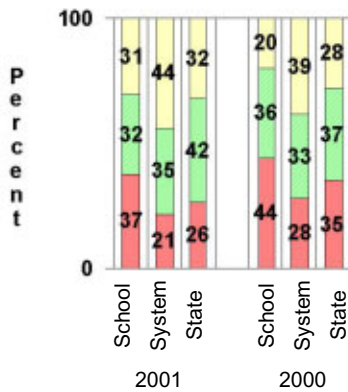
### CRITERION-REFERENCED ASSESSMENTS

#### Criterion-Referenced Competency Tests (CRCTs)

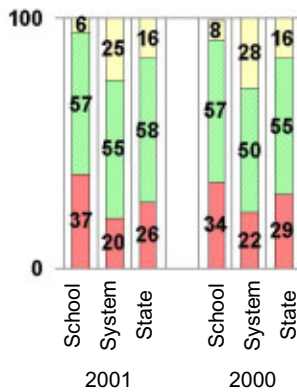
Percentage of Students Scoring in the Indicated Achievement Levels

Each chart reflects data for two years of testing.

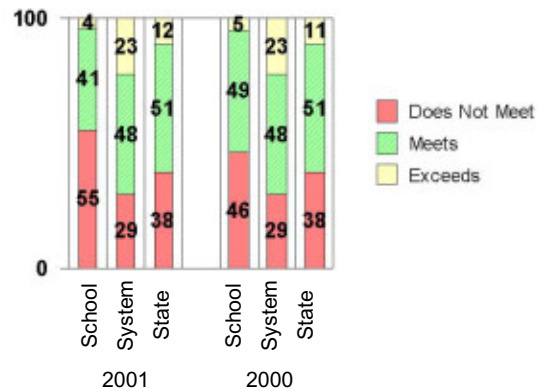
Grade 4 Reading



Grade 4 Language Arts



Grade 4 Mathematics



### PERFORMANCE ASSESSMENTS

#### Grade 5 Writing Assessment

| Percent at Developmental Stages:         | 2000-2001 |        |       | 1999-2000 |        |       | 1998-99 |        |       |
|--|-----------|--------|-------|-----------|--------|-------|---------|--------|-------|
|  | School    | System | State | School    | System | State | School  | System | State |
| <b>Stage 1:</b> The Emerging Writer      | 0%        | 1%     | 1%    | 1%        | 1%     | 1%    | 1%      | 0%     | 1%    |
| <b>Stage 2:</b> The Developing Writer    | 3%        | 2%     | 2%    | 8%        | 3%     | 2%    | 1%      | 2%     | 2%    |
| <b>Stage 3:</b> The Focusing Writer      | 24%       | 14%    | 17%   | 28%       | 16%    | 19%   | 26%     | 14%    | 19%   |
| <b>Stage 4:</b> The Experimenting Writer | 44%       | 34%    | 42%   | 50%       | 38%    | 41%   | 47%     | 35%    | 41%   |
| <b>Stage 5:</b> The Engaging Writer      | 24%       | 32%    | 29%   | 11%       | 29%    | 27%   | 19%     | 31%    | 27%   |
| <b>Stage 6:</b> The Extending Writer     | 6%        | 17%    | 9%    | 2%        | 14%    | 9%    | 6%      | 18%    | 11%   |

# 2000-2001 Georgia Public Education Report Card

## Fulton County

### Campbell Elementary School

#### CERTIFIED PERSONNEL DATA

|                   |                       | Administrators | Support Personnel | PK-12 Teachers |
|-------------------|-----------------------|----------------|-------------------|----------------|
| Positions         | Number                | 2.31           | 4.84              | 47.63          |
|                   | Average Contract Days | 233.47         | 195.27            | 191.36         |
| Personnel         | Full-time             | 2              | 3                 | 46             |
|                   | Part-time             | 7              | 7                 | 6              |
| Gender            | Male                  | 0              | 3                 | 6              |
|                   | Female                | 9              | 7                 | 46             |
| Certificate Level | 4 Yr Bachelor's       | 5              | 3                 | 30             |
|                   | 5 Yr Master's         | 1              | 3                 | 18             |
|                   | 6 Yr Specialist's     | 3              | 4                 | 3              |
|                   | 7 Yr Doctoral         | 0              | 0                 | 1              |
|                   | Other *               | 0              | 0                 | 0              |
| Years Experience  | <1                    | 0              | 1                 | 6              |
|                   | 1-10                  | 3              | 4                 | 28             |
|                   | 11-20                 | 3              | 3                 | 13             |
|                   | 21-30                 | 1              | 1                 | 3              |
|                   | >30                   | 2              | 1                 | 2              |
|                   | Average               | 17.44          | 11.70             | 9.50           |

\* Includes One- and Two-Year Vocational Certificates.

#### ACCREDITATION DATA

Accredited by Southern Association of Colleges and Schools (SACS):  
Elementary/Middle Commission

#### AWARDS/RECOGNITION DATA

Schools in Georgia may receive recognition in the following programs:

- Charter School
- Pay for Performance Program
- Georgia School of Excellence
- National Blue Ribbon School

Campbell Elementary School did not receive recognition in any of these programs during the 2000-2001 school year.

For more information about these programs, contact your school principal or the school system central office.