

# 2000-2001 Georgia Public Education Report Card

## Fulton County

### Bethune Elementary School - 6602058

Grade Range - PK-5

The Georgia Public Education Report Card is designed to assist systems and schools in educational improvement. This report card contains a variety of data elements. An explanation of the terms is provided as a companion to the report card data. Please refer to the definitions for the most effective use of the reported data.

#### STUDENT DATA

##### Total Enrollment, by Race/Ethnicity and Gender

Total	Black	White	Hispanic	Asian	American Indian	Multi-Racial	Male	Female
K-5: 446	425 95.3%	1 0.2%	5 1.1%	5 1.1%	0 0.0%	10 2.2%	212 47.5%	234 52.5%
PK: 37	37 100.0%	0 0.0%	0 0.0%	0 0.0%	0 0.0%	0 0.0%	19 51.4%	18 48.6%

##### Enrollment in Selected Programs

Program	Program Enrollment	% of Student Population
Gifted (Grades K-12)	13	2.9%
Alternative Programs (Grades K-12)	0	0.0%

##### Enrollment in Compensatory Programs

Program	Program Enrollment	% of Student Population
Special Education (Grades K-12) (PK)	31 0	7.0% N/A
English to Speakers of Other Languages (ESOL) (Grades K-12)	0	0.0%
Early Intervention Program (EIP) (Grades K-3)	62	21.3%
Remedial Education (Grades 4-5, 9-12)	43	27.7%
Title I (Grades K-12)	This School has a Schoolwide Title I Program.	

##### Students Eligible to Receive Free/Reduced-price Lunches

	Number	Percent
School	395	81.8%
System	21,659	31.6%

##### Dropout Rate \*

	Number	Percent
School	N/A	N/A
System	N/A	N/A

\* - Dropouts are not reported for grades PK-5.

##### Retained Students, by Race/Ethnicity and Gender

Total	Black	White	Hispanic	Asian	American Indian	Multi-Racial	Male	Female
0	0	0	0	0	0	0	0	0

# 2000-2001 Georgia Public Education Report Card

## Fulton County

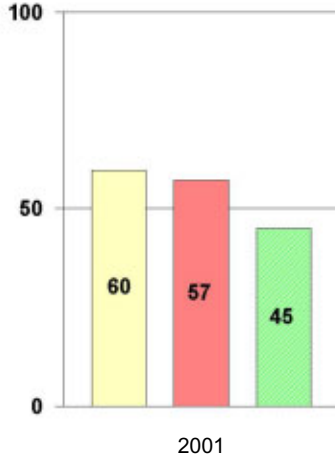
### Bethune Elementary School

#### NORM-REFERENCED ASSESSMENTS

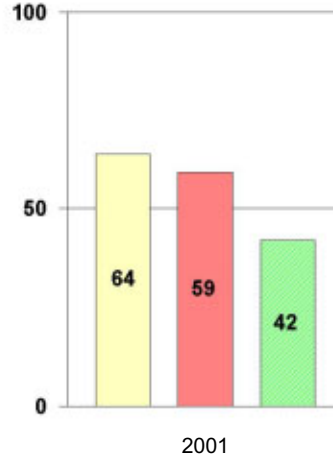
##### Stanford 9 Tests, Grade 3

Each chart reflects data for one year of testing.

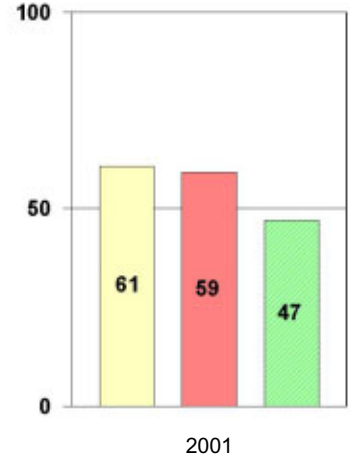
**Total Reading**



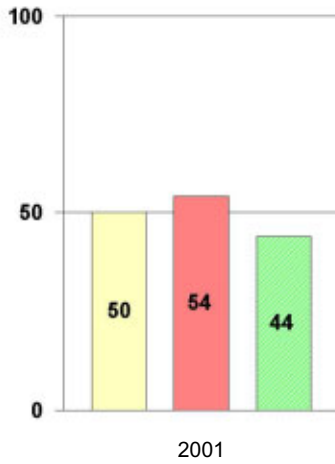
**Total Mathematics**



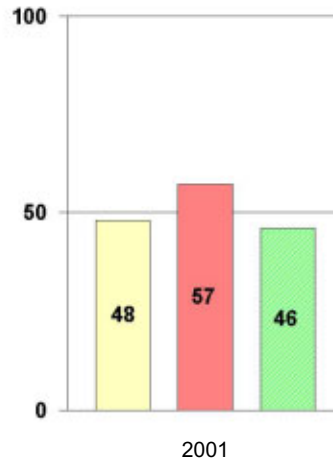
**Language**



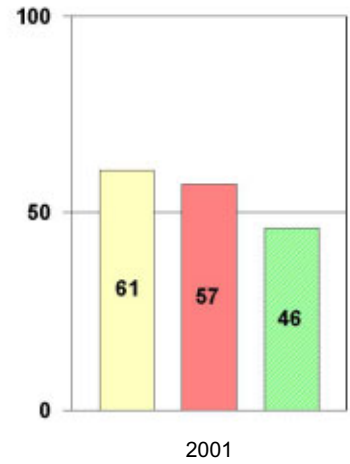
**Science**



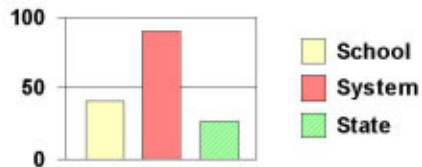
**Social Science**



**Complete Battery**



#### Legend



# 2000-2001 Georgia Public Education Report Card

## Fulton County

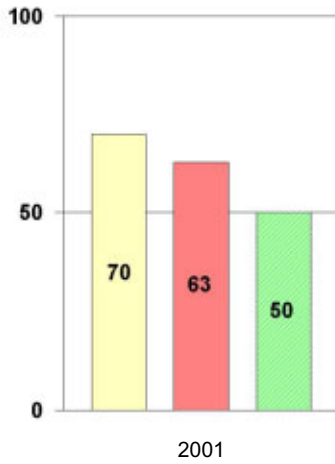
### Bethune Elementary School

#### NORM-REFERENCED ASSESSMENTS

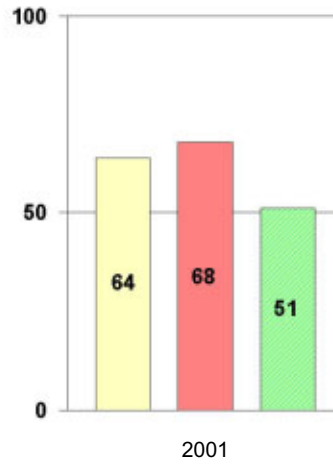
##### Stanford 9 Tests, Grade 5

Each chart reflects data for one year of testing.

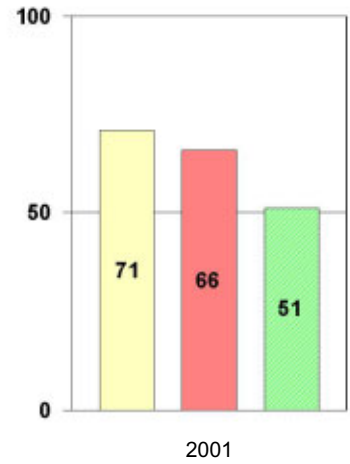
**Total Reading**



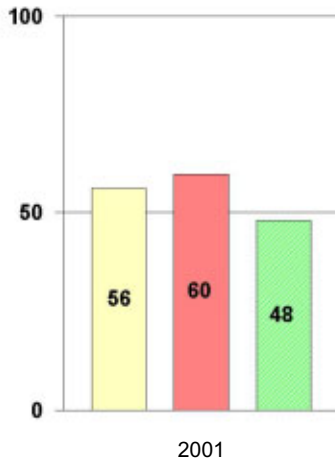
**Total Mathematics**



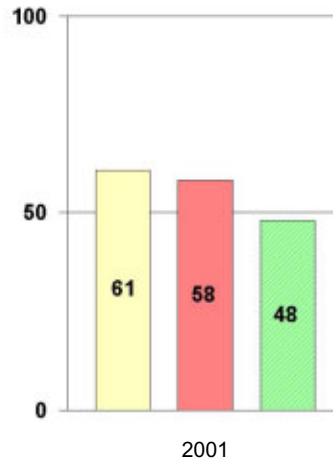
**Language**



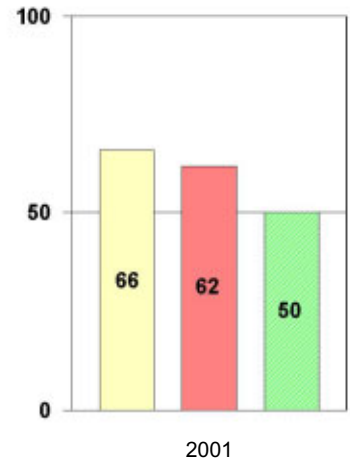
**Science**



**Social Science**



**Complete Battery**



#### Legend



# 2000-2001 Georgia Public Education Report Card

## Fulton County

### Bethune Elementary School

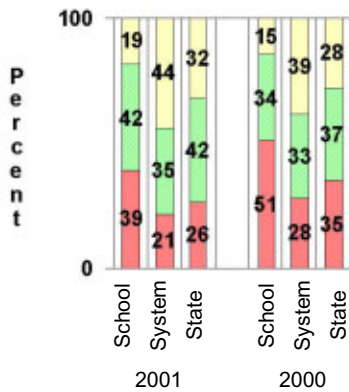
#### CRITERION-REFERENCED ASSESSMENTS

##### Criterion-Referenced Competency Tests (CRCTs)

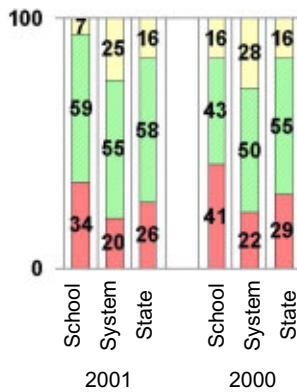
Percentage of Students Scoring in the Indicated Achievement Levels

Each chart reflects data for two years of testing.

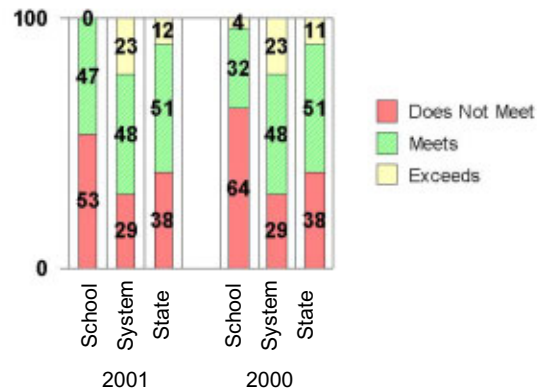
Grade 4 Reading



Grade 4 Language Arts



Grade 4 Mathematics



#### PERFORMANCE ASSESSMENTS

##### Grade 5 Writing Assessment

Percent at Developmental Stages:	2000-2001			1999-2000			1998-99		
	School	System	State	School	System	State	School	System	State
<b>Stage 1:</b> The Emerging Writer	0%	1%	1%	1%	1%	1%	0%	0%	1%
<b>Stage 2:</b> The Developing Writer	4%	2%	2%	1%	3%	2%	2%	2%	2%
<b>Stage 3:</b> The Focusing Writer	26%	14%	17%	28%	16%	19%	23%	14%	19%
<b>Stage 4:</b> The Experimenting Writer	40%	34%	42%	54%	38%	41%	41%	35%	41%
<b>Stage 5:</b> The Engaging Writer	18%	32%	29%	13%	29%	27%	30%	31%	27%
<b>Stage 6:</b> The Extending Writer	13%	17%	9%	3%	14%	9%	4%	18%	11%

# 2000-2001 Georgia Public Education Report Card

## Fulton County

### Bethune Elementary School

#### CERTIFIED PERSONNEL DATA

		Administrators	Support Personnel	PK-12 Teachers
Positions	Number	2.25	3.63	31.83
	Average Contract Days	234.64	195.37	190.47
Personnel	Full-time	2	2	30
	Part-time	8	10	3
Gender	Male	0	3	4
	Female	10	9	29
Certificate Level	4 Yr Bachelor's	2	2	17
	5 Yr Master's	5	8	11
	6 Yr Specialist's	3	2	5
	7 Yr Doctoral	0	0	0
	Other *	0	0	0
Years Experience	<1	0	1	0
	1-10	1	2	7
	11-20	4	3	18
	21-30	2	3	6
	>30	3	3	2
	Average	22.70	18.92	16.27

\* Includes One- and Two-Year Vocational Certificates.

#### ACCREDITATION DATA

Accredited by Southern Association of Colleges and Schools (SACS):  
Elementary/Middle Commission

#### AWARDS/RECOGNITION DATA

Schools in Georgia may receive recognition in the following programs:

- Charter School
- Pay for Performance Program
- Georgia School of Excellence
- National Blue Ribbon School

Bethune Elementary School did not receive recognition in any of these programs during the 2000-2001 school year.

For more information about these programs, contact your school principal or the school system central office.