

# 2000-2001 Georgia Public Education Report Card

## Fulton County

### Bear Creek Middle School - 6600391

Grade Range - 6-8

The Georgia Public Education Report Card is designed to assist systems and schools in educational improvement. This report card contains a variety of data elements. An explanation of the terms is provided as a companion to the report card data. Please refer to the definitions for the most effective use of the reported data.

#### STUDENT DATA

##### Total Enrollment, by Race/Ethnicity and Gender

Total		Black	White	Hispanic	Asian	American Indian	Multi-Racial	Male	Female
6-8:	1,173	866	209	64	10	1	23	633	540
		73.8%	17.8%	5.5%	0.9%	0.1%	2.0%	54.0%	46.0%

##### Enrollment in Selected Programs

Program	Program Enrollment	% of Student Population
Gifted (Grades K-12)	57	4.9%
Vocational Labs (Grades 9-12)	0	0.0%
Alternative Programs (Grades K-12)	11	0.9%

##### Enrollment in Compensatory Programs

Program	Program Enrollment	% of Student Population
Special Education (Grades K-12) (PK)	165 0	14.1% N/A
English to Speakers of Other Languages (ESOL) (Grades K-12)	13	1.1%
Title I (Grades K-12)	This School has a Schoolwide Title I Program.	

##### Students Eligible to Receive Free/Reduced-price Lunches

	Number	Percent
School	800	68.2%
System	21,659	31.6%

##### Dropout Rate for Grades 6-8

	Number	Percent
School	8	0.6%
System	44	0.2%

##### Retained Students, by Race/Ethnicity and Gender

Total	Black	White	Hispanic	Asian	American Indian	Multi-Racial	Male	Female
54	46	8	0	0	0	0	31	23
	85.2%	14.8%	0.0%	0.0%	0.0%	0.0%	57.4%	42.6%

# 2000-2001 Georgia Public Education Report Card

## Fulton County

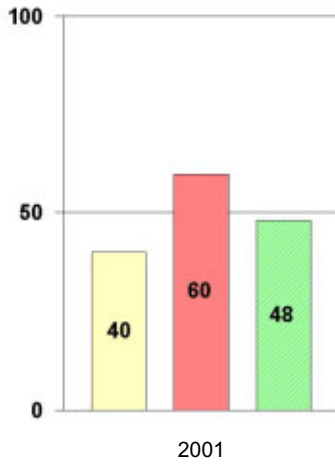
### Bear Creek Middle School

#### NORM-REFERENCED ASSESSMENTS

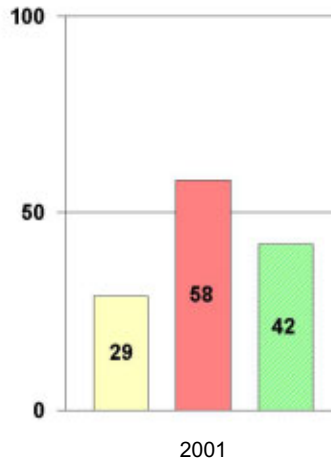
##### Stanford 9 Tests, Grade 8

Each chart reflects data for one year of testing.

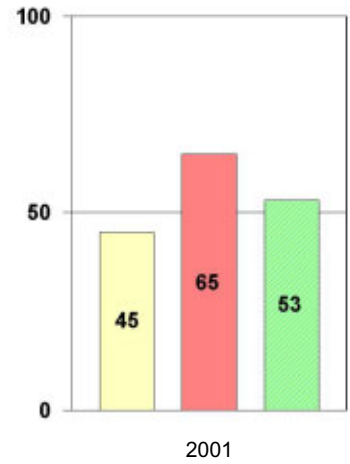
###### Total Reading



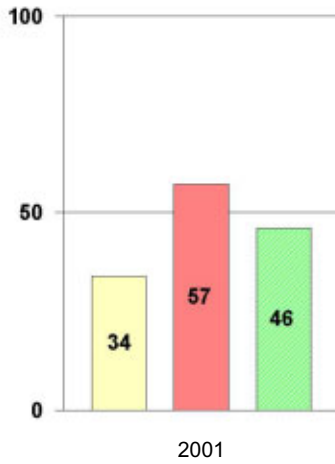
###### Total Mathematics



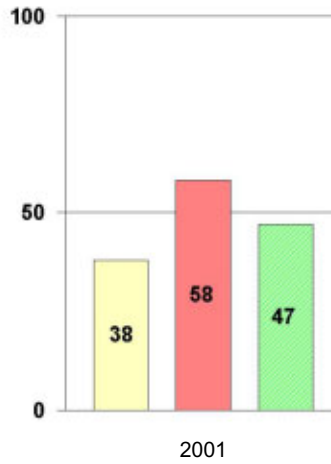
###### Language



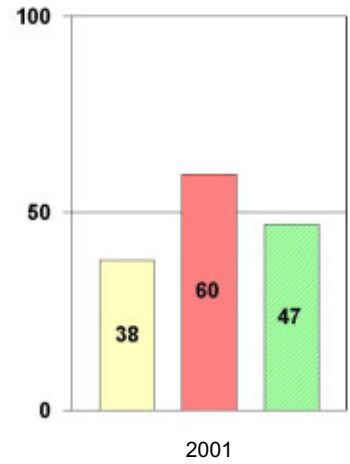
###### Science



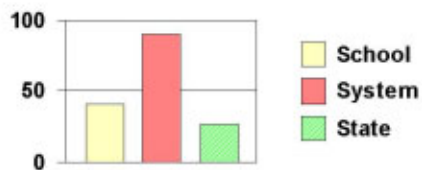
###### Social Science



###### Complete Battery



#### Legend



# 2000-2001 Georgia Public Education Report Card

## Fulton County

### Bear Creek Middle School

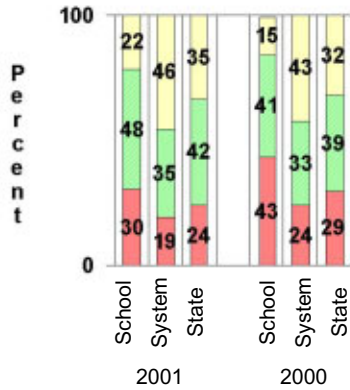
#### CRITERION-REFERENCED ASSESSMENTS

##### Criterion-Referenced Competency Tests (CRCTs)

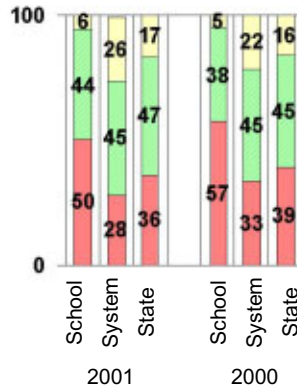
Percentage of Students Scoring in the Indicated Achievement Levels

Each chart reflects data for two years of testing.

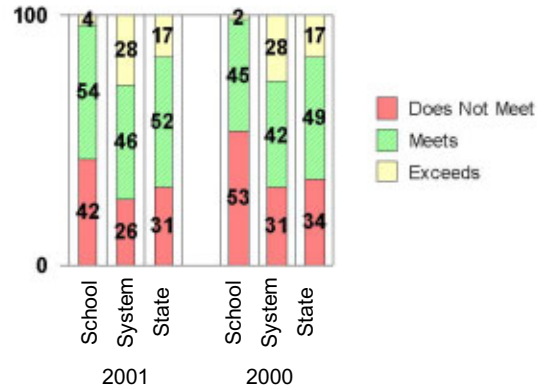
Grade 6 Reading



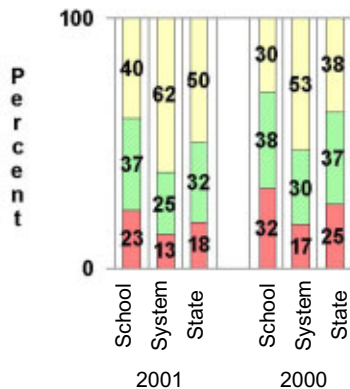
Grade 6 Language Arts



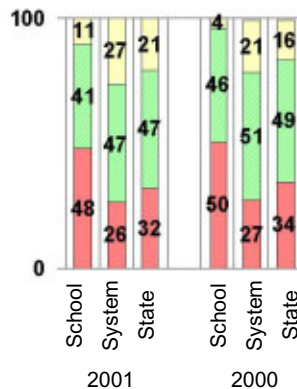
Grade 6 Mathematics



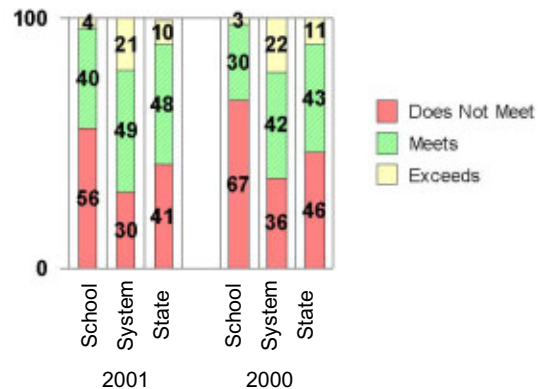
Grade 8 Reading



Grade 8 Language Arts



Grade 8 Mathematics



#### PERFORMANCE ASSESSMENTS

##### Grade 8 Writing Assessment

		2000-2001			1999-2000		
Categories of Scaled Scores:		School	System	State	School	System	State
Not on Target	(300-348)	22%	12%	17%	35%	19%	28%
On Target	(349-367)	75%	67%	72%	58%	59%	58%
Exceeds Target	(368-400)	3%	20%	12%	6%	22%	13%
Average Scaled Score: (Range 300-400)		353	360	357	351	359	354

# 2000-2001 Georgia Public Education Report Card

## Fulton County

### Bear Creek Middle School

#### CERTIFIED PERSONNEL DATA

		Administrators	Support Personnel	PK-12 Teachers
Positions	Number	3.85	5.96	72.08
	Average Contract Days	228.92	197.81	190.00
Personnel	Full-time	3	4	71
	Part-time	17	14	2
Gender	Male	8	8	23
	Female	12	10	50
Certificate Level	4 Yr Bachelor's	12	7	48
	5 Yr Master's	4	8	19
	6 Yr Specialist's	3	3	6
	7 Yr Doctoral	1	0	0
	Other *	0	0	0
Years Experience	<1	1	2	10
	1-10	8	9	29
	11-20	5	3	14
	21-30	5	2	18
	>30	1	2	2
	Average	14.90	11.17	11.86

\* Includes One- and Two-Year Vocational Certificates.

#### ACCREDITATION DATA

Accredited by Southern Association of Colleges and Schools (SACS):  
Elementary/Middle Commission

#### AWARDS/RECOGNITION DATA

Schools in Georgia may receive recognition in the following programs:

- Charter School
- Pay for Performance Program
- Georgia School of Excellence
- National Blue Ribbon School

Bear Creek Middle School did not receive recognition in any of these programs during the 2000-2001 school year.

For more information about these programs, contact your school principal or the school system central office.