

# 2000-2001 Georgia Public Education Report Card

## Fulton County

### Barnwell Elementary School - 6600187

Grade Range - PK-5

The Georgia Public Education Report Card is designed to assist systems and schools in educational improvement. This report card contains a variety of data elements. An explanation of the terms is provided as a companion to the report card data. Please refer to the definitions for the most effective use of the reported data.

#### STUDENT DATA

##### Total Enrollment, by Race/Ethnicity and Gender

Total	Black	White	Hispanic	Asian	American Indian	Multi-Racial	Male	Female
K-5: 942	45 4.8%	792 84.1%	19 2.0%	68 7.2%	0 0.0%	18 1.9%	492 52.2%	450 47.8%
PK: 22	2 9.1%	17 77.3%	0 0.0%	2 9.1%	0 0.0%	1 4.5%	16 72.7%	6 27.3%

##### Enrollment in Selected Programs

Program	Program Enrollment	% of Student Population
Gifted (Grades K-12)	71	7.5%
Alternative Programs (Grades K-12)	0	0.0%

##### Enrollment in Compensatory Programs

Program	Program Enrollment	% of Student Population
Special Education (Grades K-12)	139	14.8%
(PK)	39	N/A
English to Speakers of Other Languages (ESOL) (Grades K-12)	0	0.0%
Early Intervention Program (EIP) (Grades K-3)	75	11.8%
Remedial Education (Grades 4-5, 9-12)	13	4.2%
Title I (Grades K-12)	This School has no Title I Program.	

##### Students Eligible to Receive Free/Reduced-price Lunches

	Number	Percent
School	27	2.8%
System	21,659	31.6%

##### Dropout Rate \*

	Number	Percent
School	N/A	N/A
System	N/A	N/A

\* - Dropouts are not reported for grades PK-5.

##### Retained Students, by Race/Ethnicity and Gender

Total	Black	White	Hispanic	Asian	American Indian	Multi-Racial	Male	Female
13	1 7.7%	11 84.6%	0 0.0%	1 7.7%	0 0.0%	0 0.0%	12 92.3%	1 7.7%

# 2000-2001 Georgia Public Education Report Card

## Fulton County

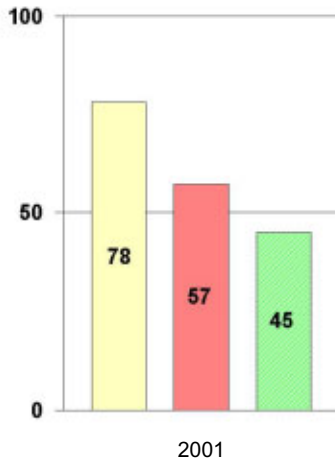
### Barnwell Elementary School

#### NORM-REFERENCED ASSESSMENTS

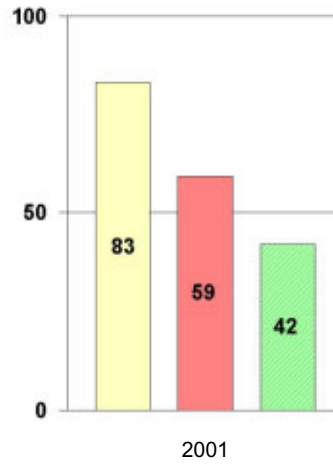
##### Stanford 9 Tests, Grade 3

Each chart reflects data for one year of testing.

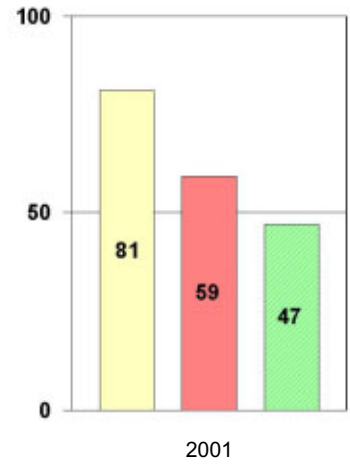
**Total Reading**



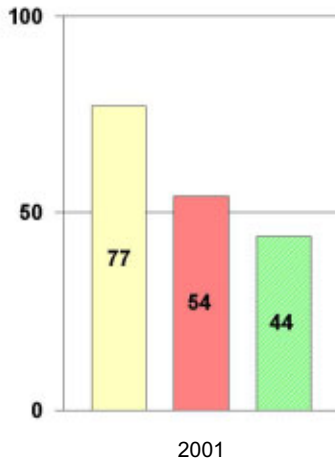
**Total Mathematics**



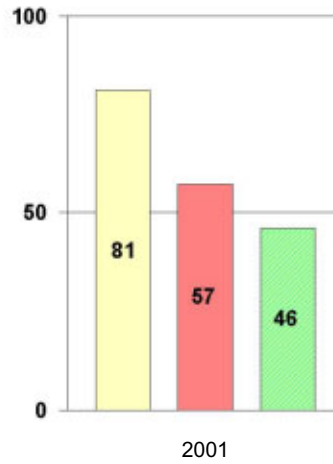
**Language**



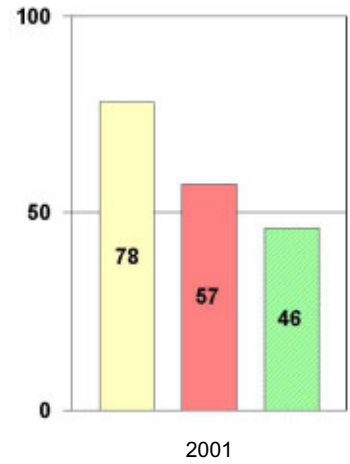
**Science**



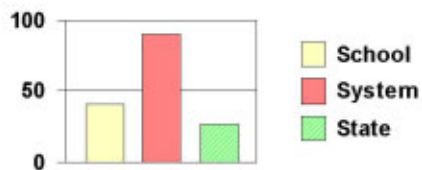
**Social Science**



**Complete Battery**



#### Legend



# 2000-2001 Georgia Public Education Report Card

## Fulton County

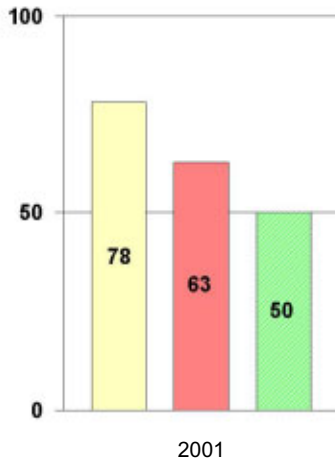
### Barnwell Elementary School

#### NORM-REFERENCED ASSESSMENTS

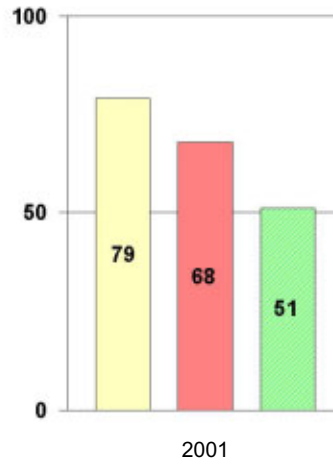
##### Stanford 9 Tests, Grade 5

Each chart reflects data for one year of testing.

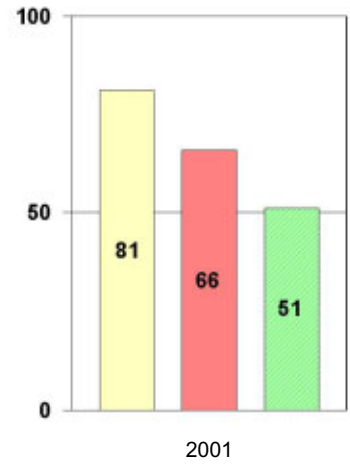
**Total Reading**



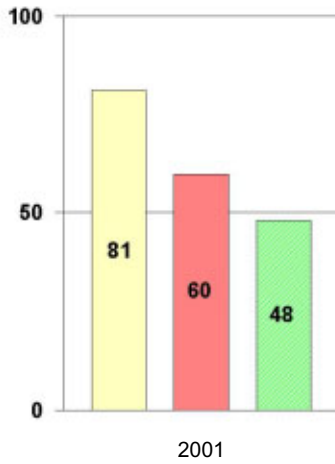
**Total Mathematics**



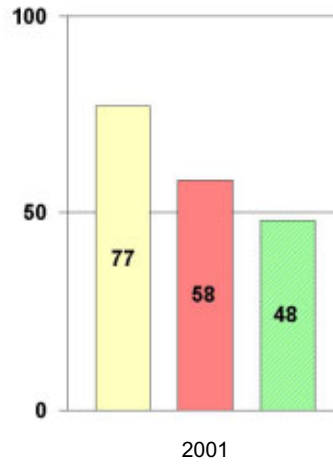
**Language**



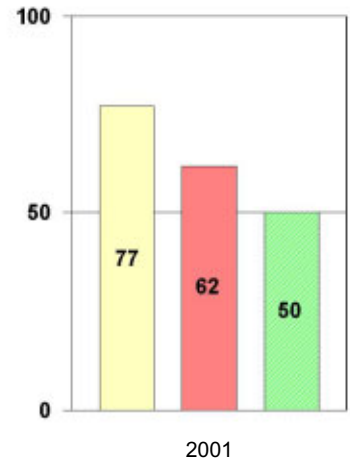
**Science**



**Social Science**



**Complete Battery**



#### Legend



# 2000-2001 Georgia Public Education Report Card

## Fulton County Barnwell Elementary School

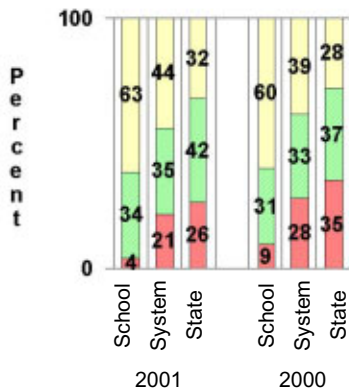
### CRITERION-REFERENCED ASSESSMENTS

#### Criterion-Referenced Competency Tests (CRCTs)

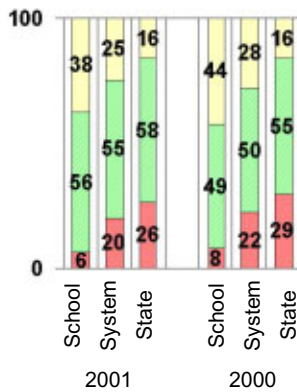
Percentage of Students Scoring in the Indicated Achievement Levels

Each chart reflects data for two years of testing.

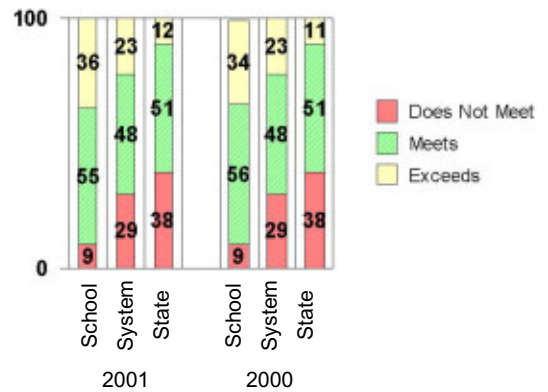
Grade 4 Reading



Grade 4 Language Arts



Grade 4 Mathematics



### PERFORMANCE ASSESSMENTS

#### Grade 5 Writing Assessment

Percent at Developmental Stages:	2000-2001			1999-2000			1998-99		
	School	System	State	School	System	State	School	System	State
<b>Stage 1:</b> The Emerging Writer	1%	1%	1%	1%	1%	1%	0%	0%	1%
<b>Stage 2:</b> The Developing Writer	2%	2%	2%	1%	3%	2%	0%	2%	2%
<b>Stage 3:</b> The Focusing Writer	7%	14%	17%	7%	16%	19%	5%	14%	19%
<b>Stage 4:</b> The Experimenting Writer	23%	34%	42%	32%	38%	41%	32%	35%	41%
<b>Stage 5:</b> The Engaging Writer	32%	32%	29%	40%	29%	27%	44%	31%	27%
<b>Stage 6:</b> The Extending Writer	35%	17%	9%	19%	14%	9%	18%	18%	11%

# 2000-2001 Georgia Public Education Report Card

## Fulton County

### Barnwell Elementary School

#### CERTIFIED PERSONNEL DATA

		Administrators	Support Personnel	PK-12 Teachers
Positions	Number	2.35	6.89	60.64
	Average Contract Days	232.63	197.24	190.25
Personnel	Full-time	2	5	57
	Part-time	7	7	9
Gender	Male	1	2	5
	Female	8	10	61
Certificate Level	4 Yr Bachelor's	4	1	36
	5 Yr Master's	3	8	28
	6 Yr Specialist's	1	3	1
	7 Yr Doctoral	1	0	1
	Other *	0	0	0
Years Experience	<1	0	1	4
	1-10	4	4	30
	11-20	1	4	22
	21-30	4	2	10
	>30	0	1	0
	Average	15.67	13.58	10.79

\* Includes One- and Two-Year Vocational Certificates.

#### ACCREDITATION DATA

Accredited by Southern Association of Colleges and Schools (SACS):  
Elementary/Middle Commission

#### AWARDS/RECOGNITION DATA

Schools in Georgia may receive recognition in the following programs:

- Charter School
- Pay for Performance Program
- Georgia School of Excellence
- National Blue Ribbon School

Barnwell Elementary School did not receive recognition in any of these programs during the 2000-2001 school year.

For more information about these programs, contact your school principal or the school system central office.