

2000-2001 Georgia Public Education Report Card

Fulton County

Randolph Elementary School - 6600390

Grade Range - PK-5

The Georgia Public Education Report Card is designed to assist systems and schools in educational improvement. This report card contains a variety of data elements. An explanation of the terms is provided as a companion to the report card data. Please refer to the definitions for the most effective use of the reported data.

STUDENT DATA

Total Enrollment, by Race/Ethnicity and Gender

Total	Black	White	Hispanic	Asian	American Indian	Multi-Racial	Male	Female
K-5: 634	630 99.4%	0 0.0%	0 0.0%	0 0.0%	0 0.0%	4 0.6%	306 48.3%	328 51.7%
PK: 60	60 100.0%	0 0.0%	0 0.0%	0 0.0%	0 0.0%	0 0.0%	35 58.3%	25 41.7%

Enrollment in Selected Programs

Program	Program Enrollment	% of Student Population
Gifted (Grades K-12)	25	3.9%
Alternative Programs (Grades K-12)	0	0.0%

Enrollment in Compensatory Programs

Program	Program Enrollment	% of Student Population
Special Education (Grades K-12) (PK)	45 2	7.1% N/A
English to Speakers of Other Languages (ESOL) (Grades K-12)	0	0.0%
Early Intervention Program (EIP) (Grades K-3)	90	21.9%
Remedial Education (Grades 4-5, 9-12)	58	26.0%
Title I (Grades K-12)	This School has a Schoolwide Title I Program.	

Students Eligible to Receive Free/Reduced-price Lunches

	Number	Percent
School	363	52.3%
System	21,659	31.6%

Dropout Rate *

	Number	Percent
School	N/A	N/A
System	N/A	N/A

* - Dropouts are not reported for grades PK-5.

Retained Students, by Race/Ethnicity and Gender

Total	Black	White	Hispanic	Asian	American Indian	Multi-Racial	Male	Female
8	8 100.0%	0 0.0%	0 0.0%	0 0.0%	0 0.0%	0 0.0%	7 87.5%	1 12.5%

2000-2001 Georgia Public Education Report Card

Fulton County

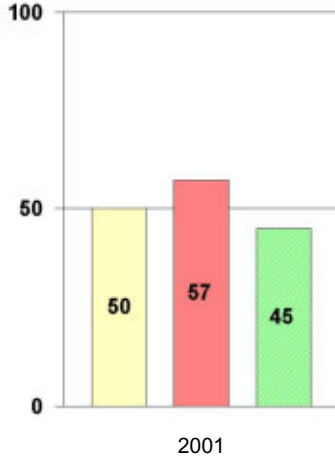
Randolph Elementary School

NORM-REFERENCED ASSESSMENTS

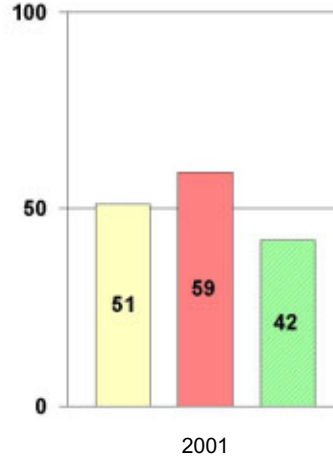
Stanford 9 Tests, Grade 3

Each chart reflects data for one year of testing.

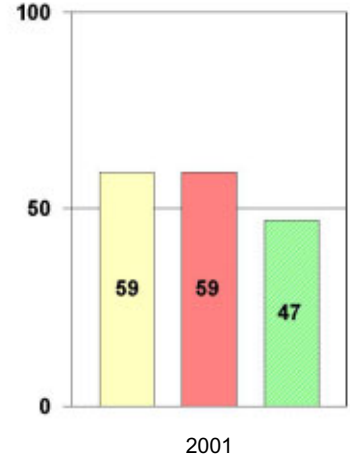
Total Reading



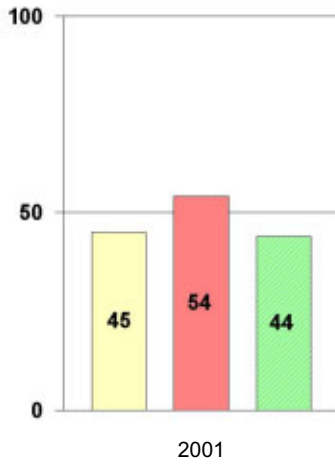
Total Mathematics



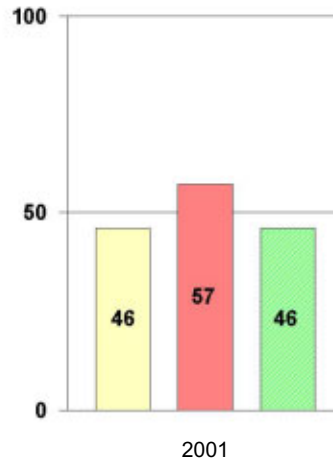
Language



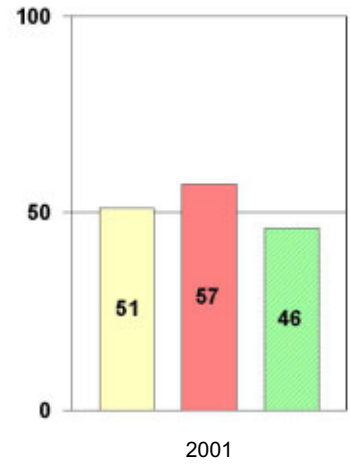
Science



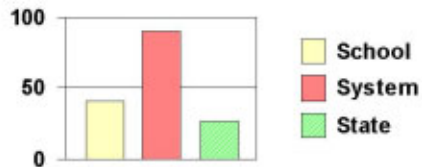
Social Science



Complete Battery



Legend



2000-2001 Georgia Public Education Report Card

Fulton County

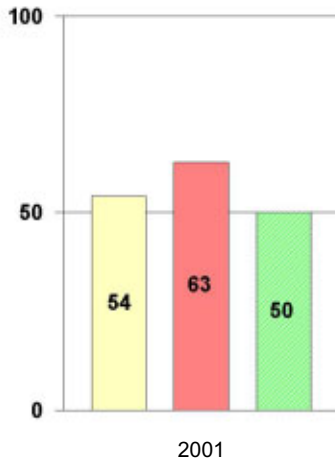
Randolph Elementary School

NORM-REFERENCED ASSESSMENTS

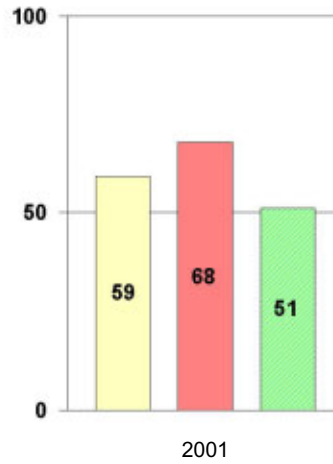
Stanford 9 Tests, Grade 5

Each chart reflects data for one year of testing.

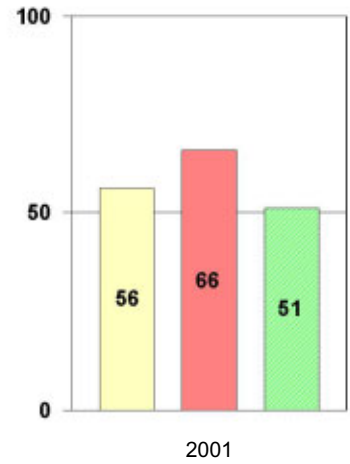
Total Reading



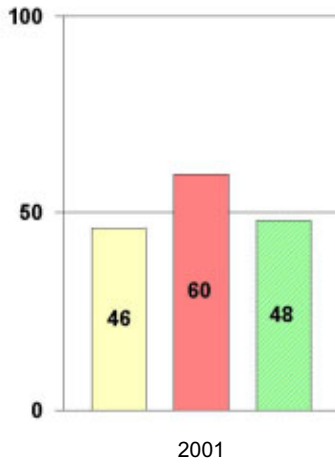
Total Mathematics



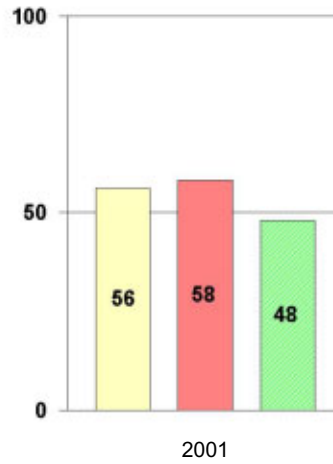
Language



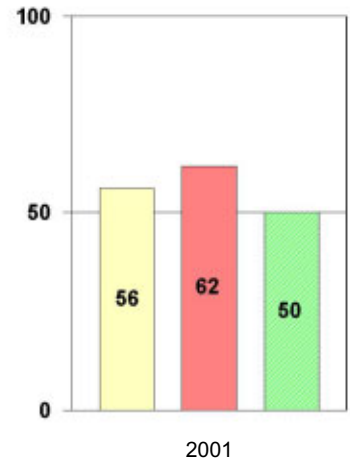
Science



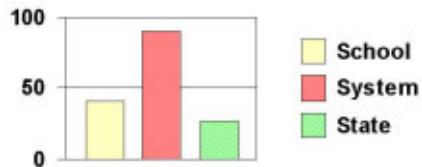
Social Science



Complete Battery



Legend



2000-2001 Georgia Public Education Report Card

Fulton County Randolph Elementary School

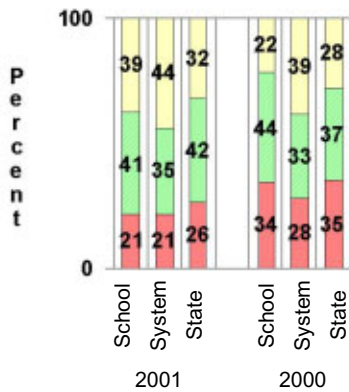
CRITERION-REFERENCED ASSESSMENTS

Criterion-Referenced Competency Tests (CRCTs)

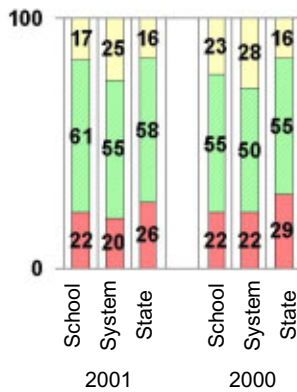
Percentage of Students Scoring in the Indicated Achievement Levels

Each chart reflects data for two years of testing.

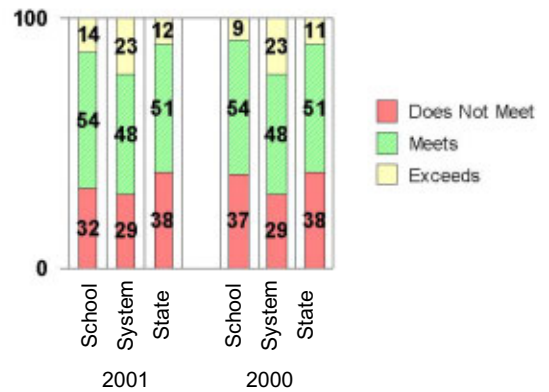
Grade 4 Reading



Grade 4 Language Arts



Grade 4 Mathematics



PERFORMANCE ASSESSMENTS

Grade 5 Writing Assessment

Percent at Developmental Stages:	2000-2001			1999-2000			1998-99		
	School	System	State	School	System	State	School	System	State
Stage 1: The Emerging Writer	0%	1%	1%	0%	1%	1%	0%	0%	1%
Stage 2: The Developing Writer	1%	2%	2%	3%	3%	2%	2%	2%	2%
Stage 3: The Focusing Writer	23%	14%	17%	32%	16%	19%	18%	14%	19%
Stage 4: The Experimenting Writer	44%	34%	42%	44%	38%	41%	42%	35%	41%
Stage 5: The Engaging Writer	28%	32%	29%	10%	29%	27%	23%	31%	27%
Stage 6: The Extending Writer	5%	17%	9%	11%	14%	9%	14%	18%	11%

2000-2001 Georgia Public Education Report Card

Fulton County

Randolph Elementary School

CERTIFIED PERSONNEL DATA

		Administrators	Support Personnel	PK-12 Teachers
Positions	Number	2.34	3.85	40.49
	Average Contract Days	232.88	196.47	190.37
Personnel	Full-time	2	2	40
	Part-time	9	7	2
Gender	Male	1	1	2
	Female	10	8	40
Certificate Level	4 Yr Bachelor's	2	2	20
	5 Yr Master's	5	6	19
	6 Yr Specialist's	4	1	3
	7 Yr Doctoral	0	0	0
	Other *	0	0	0
Years Experience	<1	0	0	4
	1-10	3	4	23
	11-20	2	1	8
	21-30	6	3	6
	>30	0	1	1
	Average	16.64	15.56	8.79

* Includes One- and Two-Year Vocational Certificates.

ACCREDITATION DATA

Accredited by Southern Association of Colleges and Schools (SACS):
Elementary/Middle Commission

AWARDS/RECOGNITION DATA

Schools in Georgia may receive recognition in the following programs:

- Charter School
- Pay for Performance Program
- Georgia School of Excellence
- National Blue Ribbon School

Randolph Elementary School did not receive recognition in any of these programs during the 2000-2001 school year.

For more information about these programs, contact your school principal or the school system central office.