

2000-2001 Georgia Public Education Report Card

Fulton County

Alpharetta Elementary School - 6601050

Grade Range - PK-5

The Georgia Public Education Report Card is designed to assist systems and schools in educational improvement. This report card contains a variety of data elements. An explanation of the terms is provided as a companion to the report card data. Please refer to the definitions for the most effective use of the reported data.

STUDENT DATA

Total Enrollment, by Race/Ethnicity and Gender

Total		Black	White	Hispanic	Asian	American Indian	Multi-Racial	Male	Female
K-5:	1,000	58 5.8%	837 83.7%	37 3.7%	46 4.6%	0 0.0%	22 2.2%	517 51.7%	483 48.3%
PK:	87	7 8.0%	73 83.9%	2 2.3%	5 5.7%	0 0.0%	0 0.0%	54 62.1%	33 37.9%

Enrollment in Selected Programs

Program	Program Enrollment	% of Student Population
Gifted (Grades K-12)	33	3.3%
Alternative Programs (Grades K-12)	0	0.0%

Enrollment in Compensatory Programs

Program	Program Enrollment	% of Student Population
Special Education (Grades K-12) (PK)	153 75	15.3% N/A
English to Speakers of Other Languages (ESOL) (Grades K-12)	26	2.6%
Early Intervention Program (EIP) (Grades K-3)	115	16.6%
Remedial Education (Grades 4-5, 9-12)	37	12.0%
Title I (Grades K-12)	This School has no Title I Program.	

Students Eligible to Receive Free/Reduced-price Lunches

	Number	Percent
School	65	6.0%
System	21,659	31.6%

Dropout Rate *

	Number	Percent
School	N/A	N/A
System	N/A	N/A

* - Dropouts are not reported for grades PK-5.

Retained Students, by Race/Ethnicity and Gender

Total	Black	White	Hispanic	Asian	American Indian	Multi-Racial	Male	Female
36	5 13.9%	29 80.6%	2 5.6%	0 0.0%	0 0.0%	0 0.0%	23 63.9%	13 36.1%

2000-2001 Georgia Public Education Report Card

Fulton County

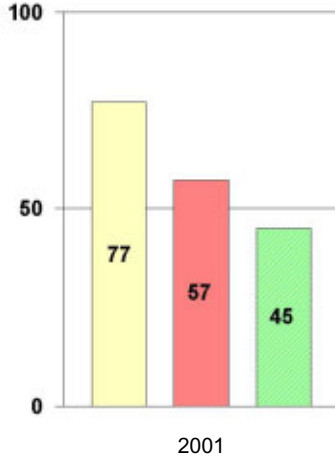
Alpharetta Elementary School

NORM-REFERENCED ASSESSMENTS

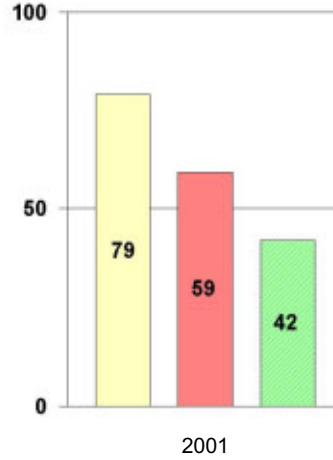
Stanford 9 Tests, Grade 3

Each chart reflects data for one year of testing.

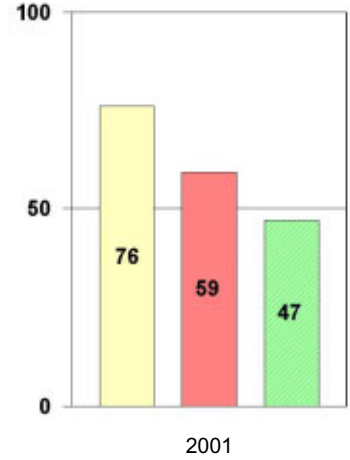
Total Reading



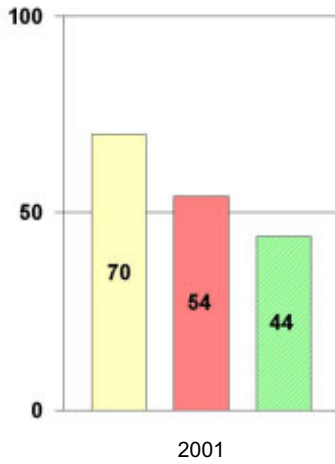
Total Mathematics



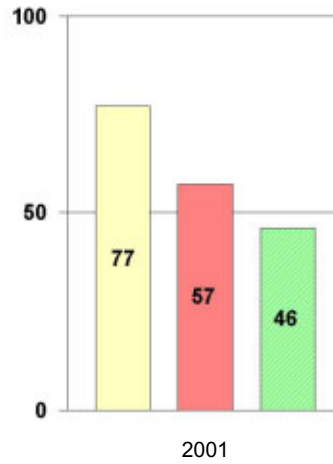
Language



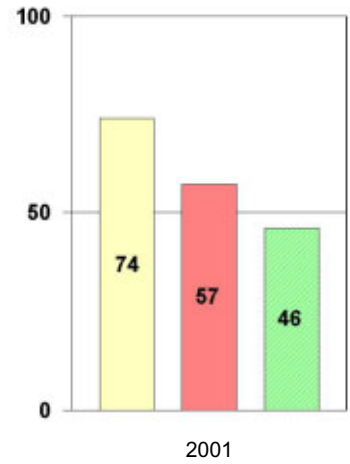
Science



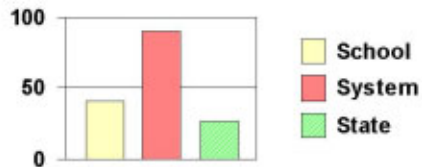
Social Science



Complete Battery



Legend



2000-2001 Georgia Public Education Report Card

Fulton County

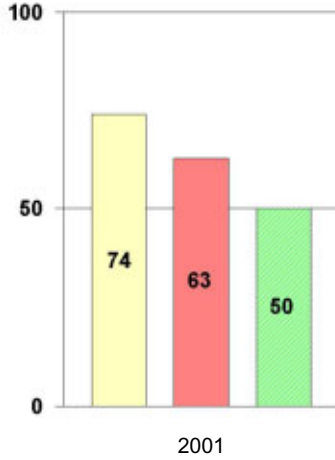
Alpharetta Elementary School

NORM-REFERENCED ASSESSMENTS

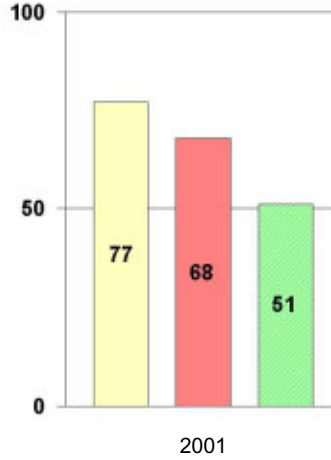
Stanford 9 Tests, Grade 5

Each chart reflects data for one year of testing.

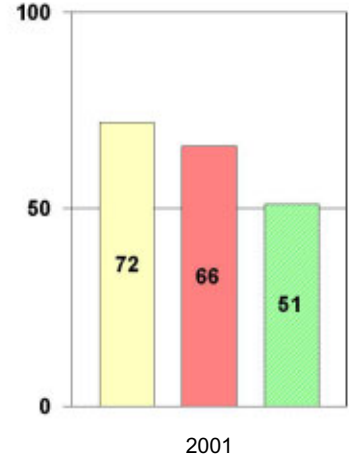
Total Reading



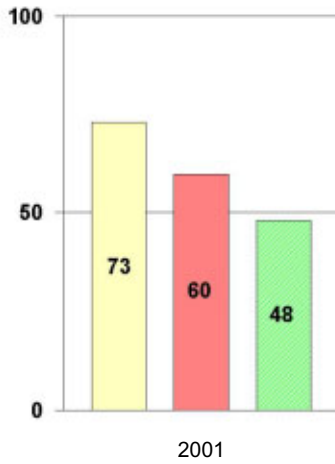
Total Mathematics



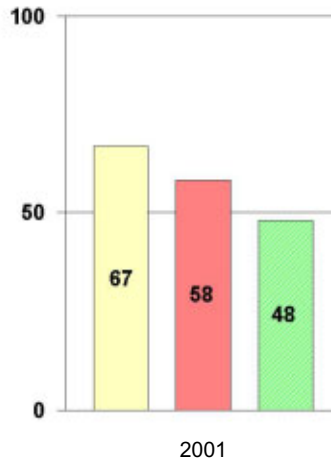
Language



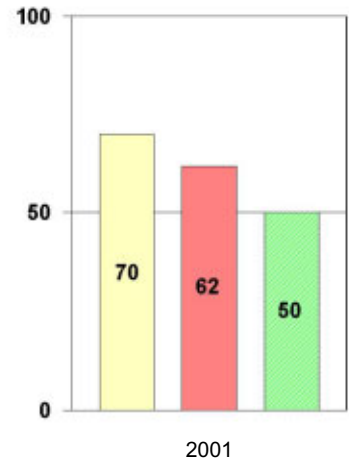
Science



Social Science



Complete Battery



Legend



2000-2001 Georgia Public Education Report Card

Fulton County Alpharetta Elementary School

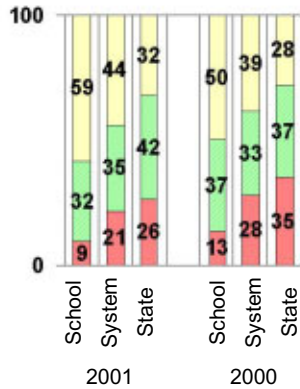
CRITERION-REFERENCED ASSESSMENTS

Criterion-Referenced Competency Tests (CRCTs)

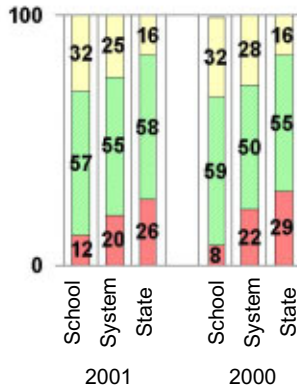
Percentage of Students Scoring in the Indicated Achievement Levels

Each chart reflects data for two years of testing.

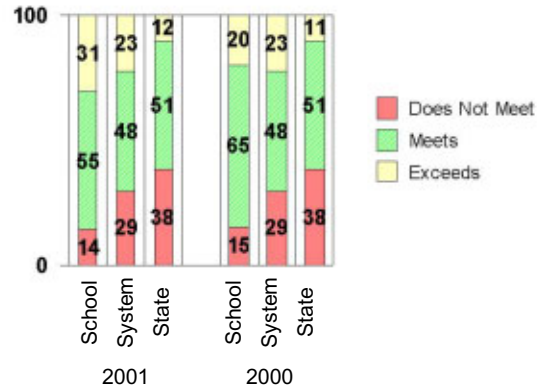
Grade 4 Reading



Grade 4 Language Arts



Grade 4 Mathematics



PERFORMANCE ASSESSMENTS

Grade 5 Writing Assessment

Percent at Developmental Stages:	2000-2001			1999-2000			1998-99		
	School	System	State	School	System	State	School	System	State
Stage 1: The Emerging Writer	0%	1%	1%	0%	1%	1%	0%	0%	1%
Stage 2: The Developing Writer	1%	2%	2%	1%	3%	2%	0%	2%	2%
Stage 3: The Focusing Writer	10%	14%	17%	9%	16%	19%	10%	14%	19%
Stage 4: The Experimenting Writer	30%	34%	42%	40%	38%	41%	27%	35%	41%
Stage 5: The Engaging Writer	38%	32%	29%	32%	29%	27%	44%	31%	27%
Stage 6: The Extending Writer	21%	17%	9%	19%	14%	9%	19%	18%	11%

2000-2001 Georgia Public Education Report Card

Fulton County

Alpharetta Elementary School

CERTIFIED PERSONNEL DATA

		Administrators	Support Personnel	PK-12 Teachers
Positions	Number	2.47	9.30	73.12
	Average Contract Days	230.73	194.52	190.20
Personnel	Full-time	2	8	66
	Part-time	9	7	13
Gender	Male	1	0	5
	Female	10	15	74
Certificate Level	4 Yr Bachelor's	6	1	46
	5 Yr Master's	3	13	30
	6 Yr Specialist's	2	1	2
	7 Yr Doctoral	0	0	1
	Other *	0	0	0
Years Experience	<1	0	1	7
	1-10	4	3	32
	11-20	5	5	24
	21-30	2	6	15
	>30	0	0	1
	Average	12.64	17.00	11.33

* Includes One- and Two-Year Vocational Certificates.

ACCREDITATION DATA

Accredited by Southern Association of Colleges and Schools (SACS):
Elementary/Middle Commission

AWARDS/RECOGNITION DATA

Schools in Georgia may receive recognition in the following programs:

- Charter School
- Pay for Performance Program
- Georgia School of Excellence
- National Blue Ribbon School

Alpharetta Elementary School did not receive recognition in any of these programs during the 2000-2001 school year.

For more information about these programs, contact your school principal or the school system central office.