

2000-2001 Georgia Public Education Report Card

Fulton County

Conley Hills Elementary School - 6605052

Grade Range - PK-5

The Georgia Public Education Report Card is designed to assist systems and schools in educational improvement. This report card contains a variety of data elements. An explanation of the terms is provided as a companion to the report card data. Please refer to the definitions for the most effective use of the reported data.

STUDENT DATA

Total Enrollment, by Race/Ethnicity and Gender

Total	Black	White	Hispanic	Asian	American Indian	Multi-Racial	Male	Female
K-5: 725	653 90.1%	17 2.3%	44 6.1%	3 0.4%	2 0.3%	6 0.8%	353 48.7%	372 51.3%
PK: 79	68 86.1%	1 1.3%	9 11.4%	1 1.3%	0 0.0%	0 0.0%	39 49.4%	40 50.6%

Enrollment in Selected Programs

Program	Program Enrollment	% of Student Population
Gifted (Grades K-12)	0	0.0%
Alternative Programs (Grades K-12)	0	0.0%

Enrollment in Compensatory Programs

Program	Program Enrollment	% of Student Population
Special Education (Grades K-12) (PK)	70 2	9.7% N/A
English to Speakers of Other Languages (ESOL) (Grades K-12)	35	4.8%
Early Intervention Program (EIP) (Grades K-3)	123	24.0%
Remedial Education (Grades 4-5, 9-12)	49	23.1%
Title I (Grades K-12)	This School has a Schoolwide Title I Program.	

Students Eligible to Receive Free/Reduced-price Lunches

	Number	Percent
School	780	97.0%
System	21,659	31.6%

Dropout Rate *

	Number	Percent
School	N/A	N/A
System	N/A	N/A

* - Dropouts are not reported for grades PK-5.

Retained Students, by Race/Ethnicity and Gender

Total	Black	White	Hispanic	Asian	American Indian	Multi-Racial	Male	Female
75	69 92.0%	3 4.0%	3 4.0%	0 0.0%	0 0.0%	0 0.0%	37 49.3%	38 50.7%

2000-2001 Georgia Public Education Report Card

Fulton County

Conley Hills Elementary School

NORM-REFERENCED ASSESSMENTS

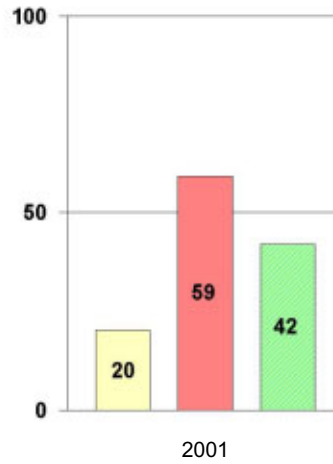
Stanford 9 Tests, Grade 3

Each chart reflects data for one year of testing.

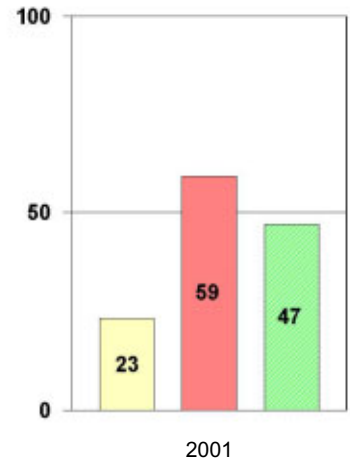
Total Reading



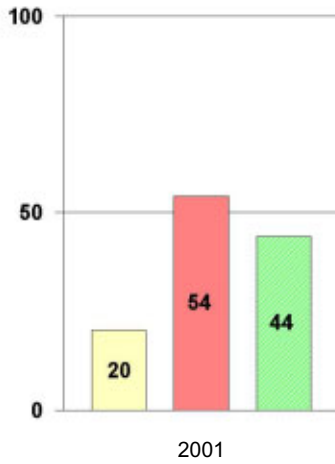
Total Mathematics



Language



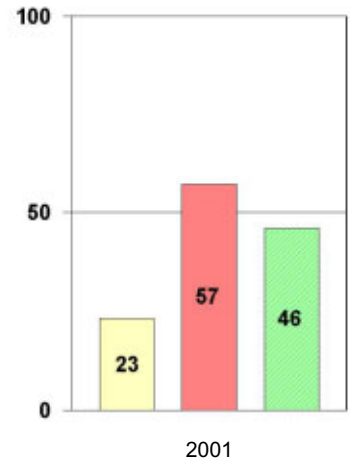
Science



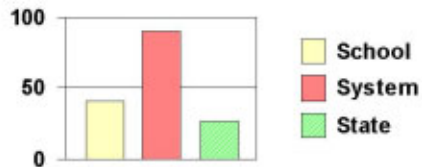
Social Science



Complete Battery



Legend



2000-2001 Georgia Public Education Report Card

Fulton County

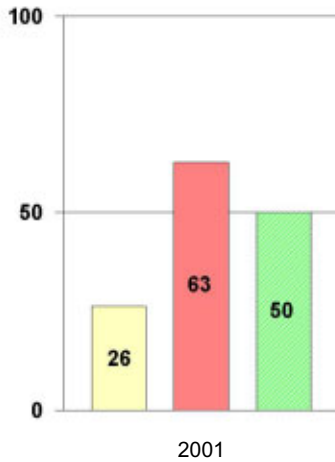
Conley Hills Elementary School

NORM-REFERENCED ASSESSMENTS

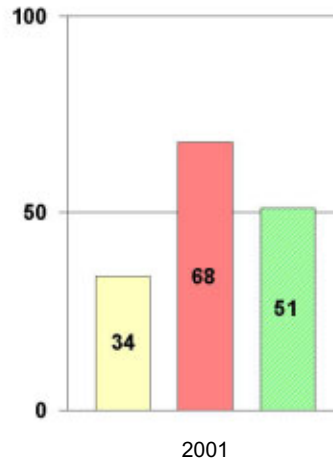
Stanford 9 Tests, Grade 5

Each chart reflects data for one year of testing.

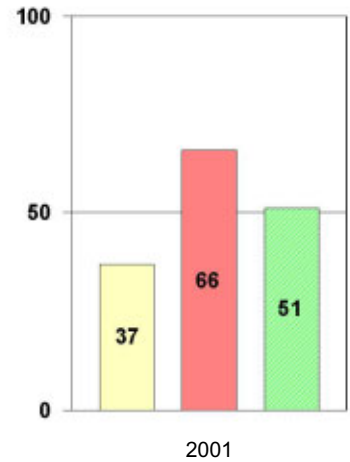
Total Reading



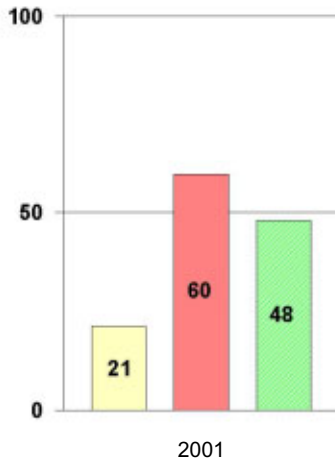
Total Mathematics



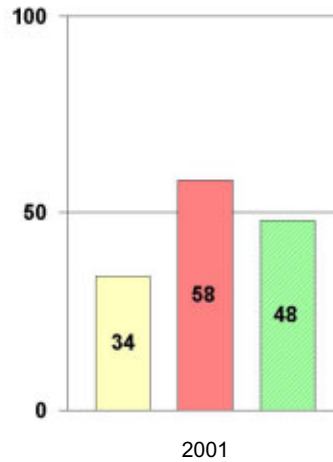
Language



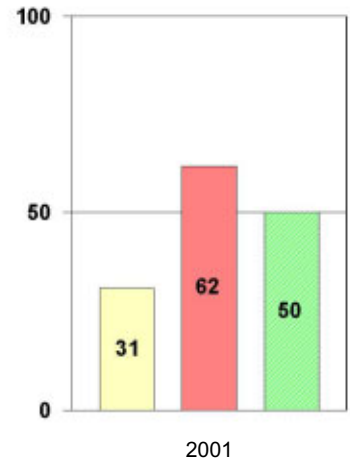
Science



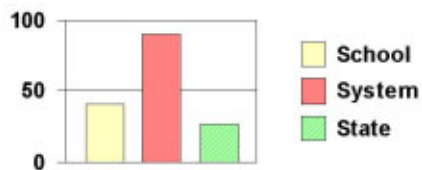
Social Science



Complete Battery



Legend



2000-2001 Georgia Public Education Report Card

Fulton County Conley Hills Elementary School

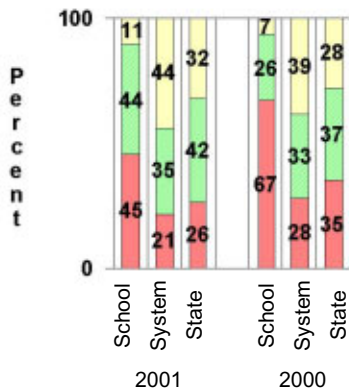
CRITERION-REFERENCED ASSESSMENTS

Criterion-Referenced Competency Tests (CRCTs)

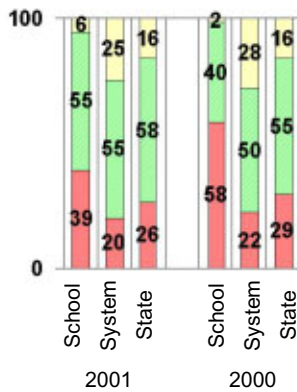
Percentage of Students Scoring in the Indicated Achievement Levels

Each chart reflects data for two years of testing.

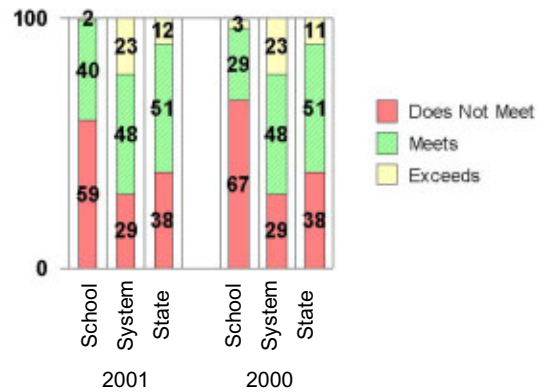
Grade 4 Reading



Grade 4 Language Arts



Grade 4 Mathematics



PERFORMANCE ASSESSMENTS

Grade 5 Writing Assessment

Percent at Developmental Stages:	2000-2001			1999-2000			1998-99		
	School	System	State	School	System	State	School	System	State
Stage 1: The Emerging Writer	0%	1%	1%	0%	1%	1%	1%	0%	1%
Stage 2: The Developing Writer	6%	2%	2%	2%	3%	2%	0%	2%	2%
Stage 3: The Focusing Writer	32%	14%	17%	37%	16%	19%	42%	14%	19%
Stage 4: The Experimenting Writer	30%	34%	42%	52%	38%	41%	35%	35%	41%
Stage 5: The Engaging Writer	25%	32%	29%	10%	29%	27%	19%	31%	27%
Stage 6: The Extending Writer	6%	17%	9%	0%	14%	9%	3%	18%	11%

2000-2001 Georgia Public Education Report Card

Fulton County

Conley Hills Elementary School

CERTIFIED PERSONNEL DATA

		Administrators	Support Personnel	PK-12 Teachers
Positions	Number	2.35	6.28	45.68
	Average Contract Days	232.51	197.01	190.33
Personnel	Full-time	2	5	45
	Part-time	7	5	3
Gender	Male	0	0	8
	Female	9	10	40
Certificate Level	4 Yr Bachelor's	7	1	34
	5 Yr Master's	1	7	12
	6 Yr Specialist's	1	2	2
	7 Yr Doctoral	0	0	0
	Other *	0	0	0
Years Experience	<1	0	0	10
	1-10	3	7	16
	11-20	5	2	14
	21-30	1	1	6
	>30	0	0	2
	Average	14.44	9.00	10.67

* Includes One- and Two-Year Vocational Certificates.

ACCREDITATION DATA

Accredited by Southern Association of Colleges and Schools (SACS):
Elementary/Middle Commission

AWARDS/RECOGNITION DATA

Schools in Georgia may receive recognition in the following programs:

- Charter School
- Pay for Performance Program
- Georgia School of Excellence
- National Blue Ribbon School

Conley Hills Elementary School did not receive recognition in any of these programs during the 2000-2001 school year.

For more information about these programs, contact your school principal or the school system central office.