

# ParentCONNECTxp: A Guide for Elementary School Parents to Student Information in the Home

## WELCOME!!

You have the opportunity to use a product that will allow you to view your child's school information via the web. The product **ParentCONNECTxp** is a web-based application that links parents and schools via the internet. All you will need to gain access to your child's information is internet access and a browser such as Netscape Navigator, Internet Explorer, or AOL version 3.0 or newer. With access to a computer and the internet, parents will be able to obtain a password that will enable them to sign on and view information about their child in a secure and user-friendly environment.

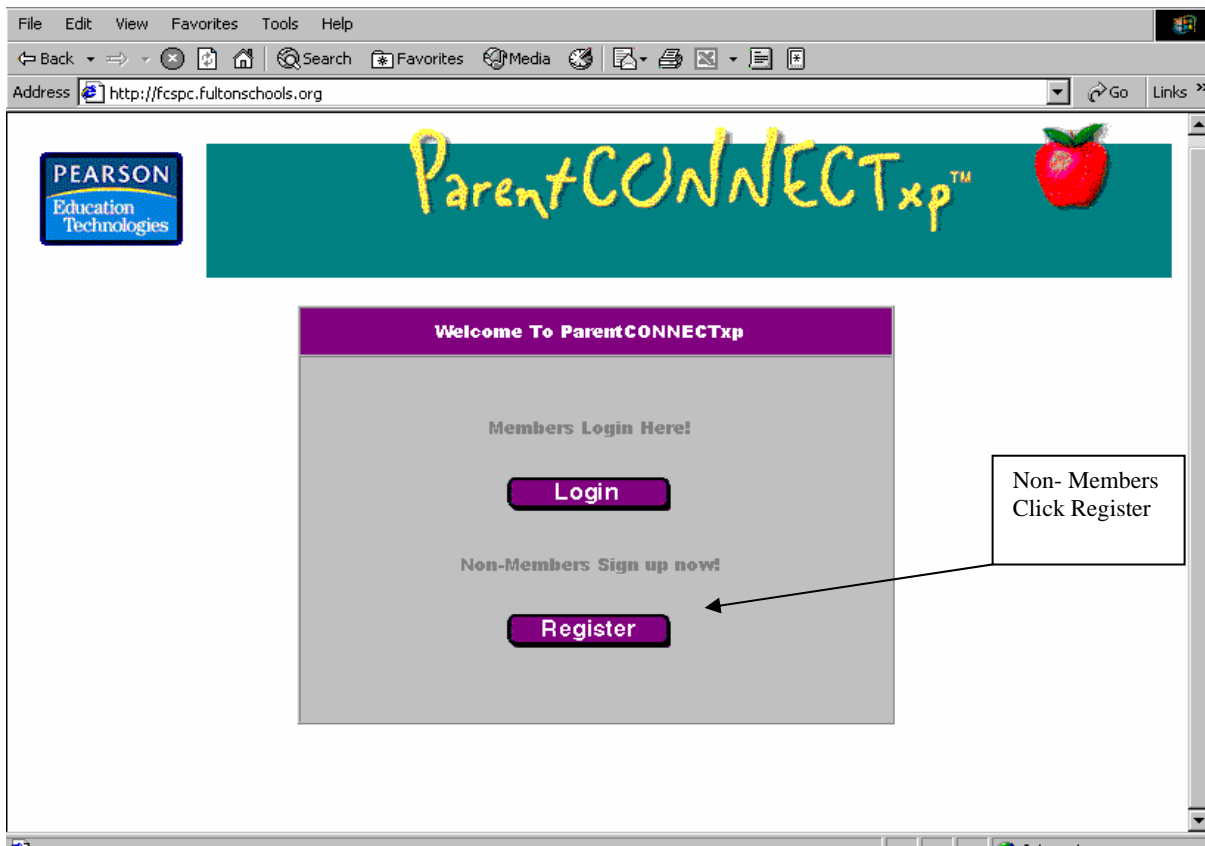
## Now Let's Get Started!!

In order to obtain a UserId and Password parents must pre-register for ParentCONNECTxp. In order to pre-register, parents should do the following:

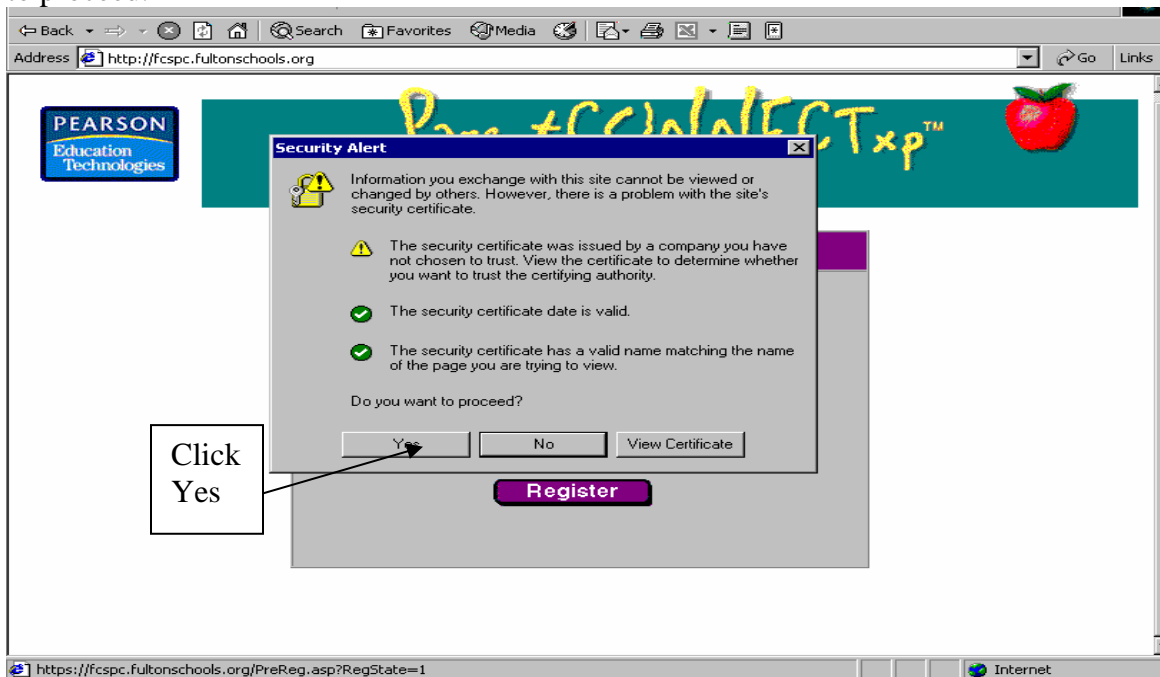
Step 1: Go to the ParentCONNECTxp website by typing in the url:

<http://fcspc.fultonschools.org>.

Step 2: From the "Welcome to ParentCONNECTxp" screen, click **Register**.



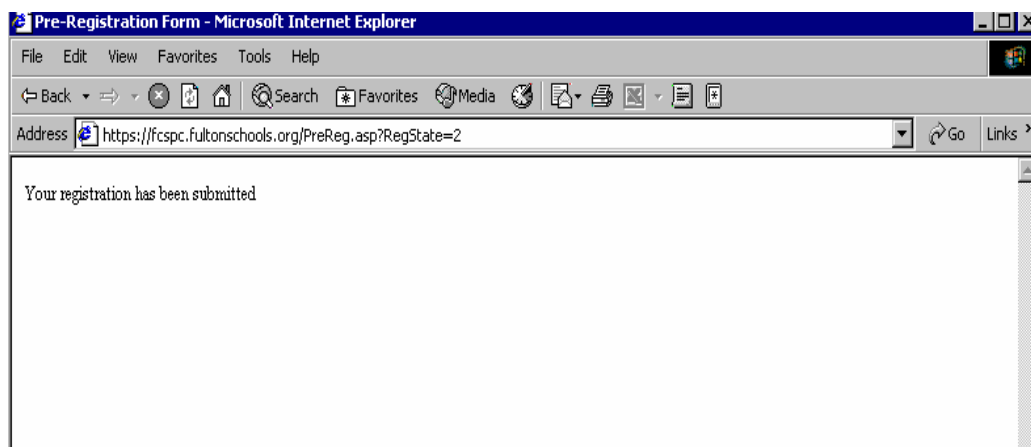
Step 3: Parents will see a security alert message displayed, Click Yes, indicating that you wish to proceed.



Step 4: Parents should complete the pre-registration form displayed. Parents must **complete the “Parent Information” section and the “Student Information” section** of the form prior to Clicking **Submit**.

The screenshot shows a web browser window with the address bar displaying <https://fcspc.fultonschools.org/PreReg.asp?RegState=1>. The page content includes the instruction: 'Please fill out the following form, and press the submit button when you are finished.' The form is divided into two main sections: 'Parent Information' and 'Student Information'. The 'Parent Information' section includes the following fields: First Name, Last Name, Mailing Address, City, State, Zip Code, Home Phone, Work Phone (optional), and Email Address (optional). The 'Student Information' section includes a large text area for entering student details and a 'Submit' button. Below the text area, there is a small note: 'Please enter information for each of the students you would like to register. Please list each student you wish to register as follows <Student Name>, <Student School>, <Grade Level> e.g. Victoria Bright, Alameda High School, 9 Daniel Bright, Alameda High School, 12'. A callout box with the text 'Click Submit after entering information' has an arrow pointing to the 'Submit' button.

Step 5: After submitting the completed form, a statement “Your registration has been submitted” will display.



## **Stop Here and Contact the School!!**

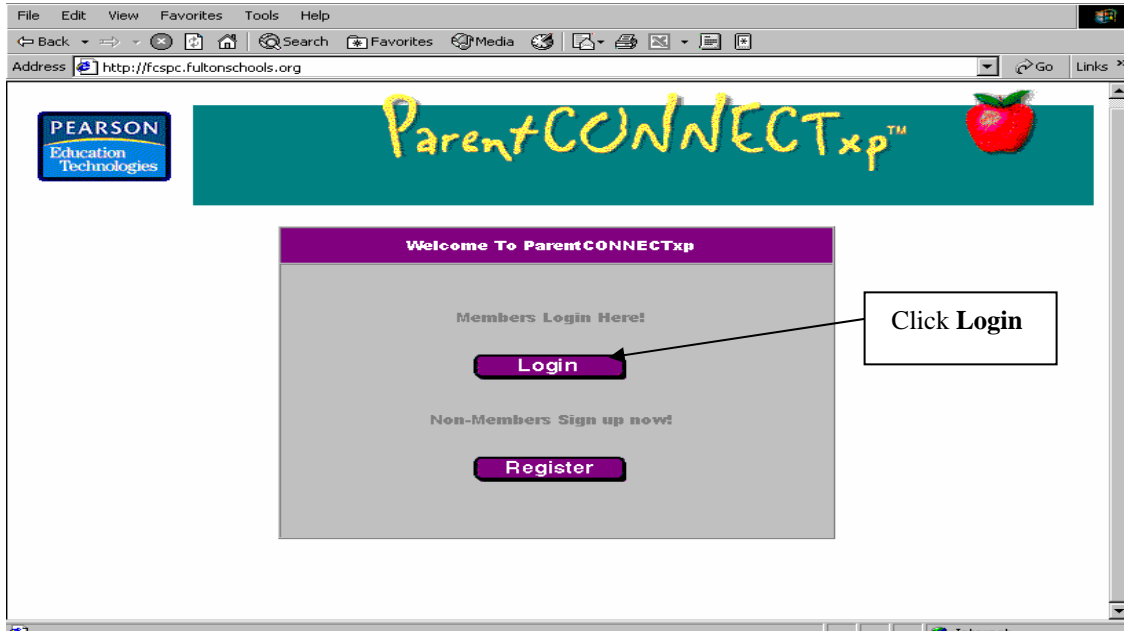
**Each parent must now contact the school and inform the Parent Connect Coordinator that you have completed the on-line pre-registration process and that you would like to receive a UserId and Password. Do not attempt to pre-register a second time, this will cause duplicate registrations and retard the process for generating this information.**

***\*\*Because all student information is confidential and can only be viewed by a Parent and/or a Legal Guardian You must have a Valid Driver's License to present to the Parent Connect Coordinator at your child's school in order to obtain a UserID and Password.***

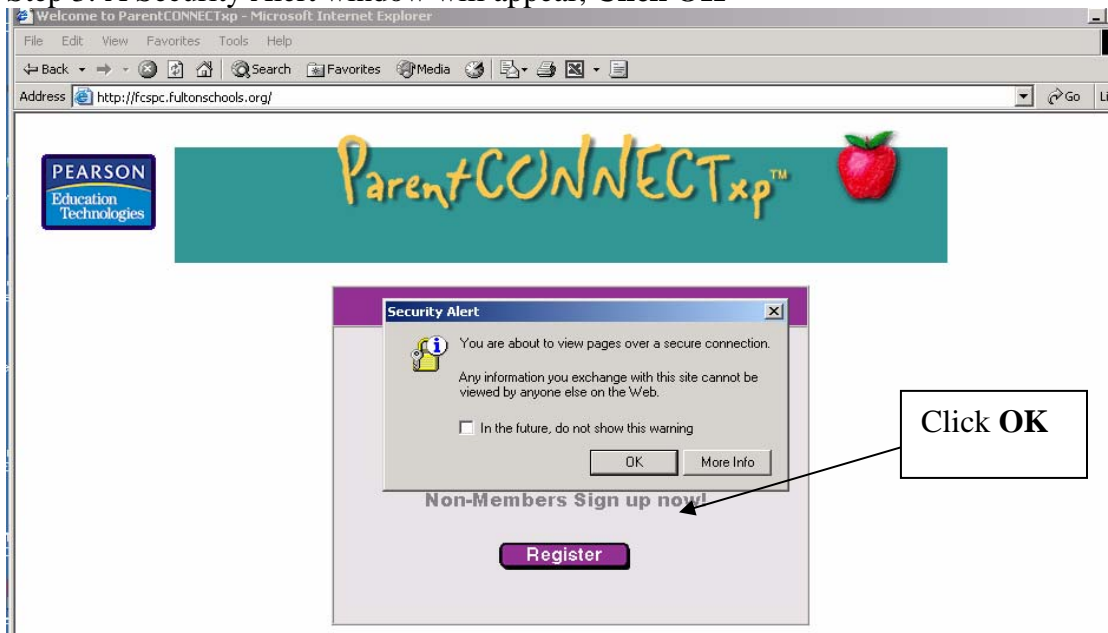
## Now that you have received a UserId and Password.....

Step 1: Now that you have received your UserID and Password, you will need to log back onto the ParentCONNECTxp website using the url: <http://fcspc.fultonschools.org>.

Step 2: Click on **Login** at the “Welcome to ParentCONNECTxp” screen.



Step 3: A Security Alert window will appear, Click OK



Step 4: Enter your newly assigned UserId and Password and **Click Login**

PEARSON  
Education  
Technologies

ParentCONNECTxp™

Fulton County Schools

**Members Login Here**

Please enter your username and password.

User ID:

Password:

Login

*Note: You may only login here if you have registered to use ParentCONNECTxp with this school district.*

Enter UserId and Password, then click **Login**

ParentCONNECTxp will give you access to important student data such as General Student Information, Grades, Attendance, Discipline, Health Information and School Information. Parents need only choose the pencil with the information you would like to view. Two pencils displayed are NOT available to parents. These are the Assignments pencil and Learning Pencil (indicated as Not Available here).

Address: <https://fcpsc.fultonschools.org/HomePage.asp>

**PEARSON**  
Education Technologies

**ParentCONNECTxp™**

**Fulton County Schools**  
Barnwell Elementary

Home  
Settings  
Help

Announcements      Contacts

(Last Updated: Mar 10 2004 5:56AM)

Sarah Abraham

**Assignments:** No assignments due this week  
**Attendance:** No tardies or absences reported today & tomorrow  
**Discipline:** No incidents reported this week

Deja Greene

**Assignments:** No assignments due this week  
**Attendance:** No tardies or absences reported today & tomorrow  
**Discipline:** No incidents reported this week

Student Info  
Assignments  
Grades  
Not Available  
Attendance  
Discipline  
School Info

**Note:** As you view information from the available pencils, you will be prompted to click on various objects to obtain more detailed information regarding your child.

## **ParentCONNECT Parent FAQ'S**

### **1. How do I contact a teacher using ParentCONNECTxp?**

*First, you must have email capabilities on your computer. To send a message to a teacher, click on the teacher's name on any screen or go to the **Contacts** page. Compose and send your email.*

### **2. Is the information that I'm viewing secure?**

*All information coming from and going to the ParentCONNECTxp website is secured and cannot be viewed by anyone else on the web.*

### **3. Is the attendance and discipline information that I am viewing current?**

*All information is uploaded from the schools to the district office at the end of the school day, the information is available the following day. All data is 1 day old.*

### **4. I forgot my password, what must I do?**

*Contact the school. The Parent Connect Coordinator has access to this information and will make sure it is available to you.*

### **5. My password is difficult to remember, can I change it?**

*Parents can change their passwords by clicking on the **SETTINGS** tab from the Home Page. From here, parents can enter and confirm a new password.*

**6. I have two children in an elementary school, do I need to register twice?**

*Parents with more than one child in an elementary school need only register once, parents should enter the names of both children in the student information section of the pre-registration form.*

**7. Why do I see warnings about security each time I access ParentConnectxp?**

*All student data is kept secure by use of a security certificate issued and maintained by Fulton County Schools. The message is normal, therefore parents should simply click **Okay**.*

**8. I have been locked out of the ParentConnectxp website, what should I do?**

*The lockout period is 60 minutes after three failed attempts to log onto the website. This is a security measure to protect the child's data. After 60 minutes, the parent should be able to logon using the correct password. If the password has been forgotten, please contact the school.*

**9. How do I exit the program after viewing my child's information?**

*To exit the program, simply close the browser and exit.*

**10. How soon after acquiring my UserId and Password can I access information?**

*Parents will be able to log onto ParentCONNECTxp and access their child's information immediately after receiving a UserId and Password.*

*This document has been posted to the following location under a section called "Parent Information"....*

<http://www.fultonschools.org/dept/studentinfo/SASIFCBOEway.html>

