



THE CORRAL

Presidents' Letter

Thank you to all the wonderful parents and staff who have done so much to get the school year off to a great start! We have just finished our Boosterthon Fun Run and raised over \$30,000 for our school! The children had a great time running and learning positive character traits. Hopefully you remembered to turn in your Boosterthon money by September 17th so that our teachers will get 10% back for their classrooms. A big thank you to all who helped with Boosterthon!!

Our Fall Festival is coming up on Sunday, October 17th from 1-5. This is a fun event for everyone and we look forward to seeing you all there!

We are still short of our goal of 100% membership in PTA. A PTA membership is only \$5.00, but goes a long way to making a difference in our school and community. By joining PTA, you lend your voice to ours to become a stronger voice for all our children. Forms to contribute to SEF and join PTA are located in the front office.

Thanks again for your support of CCE and the PTA. If we work together we can make a difference for our children.

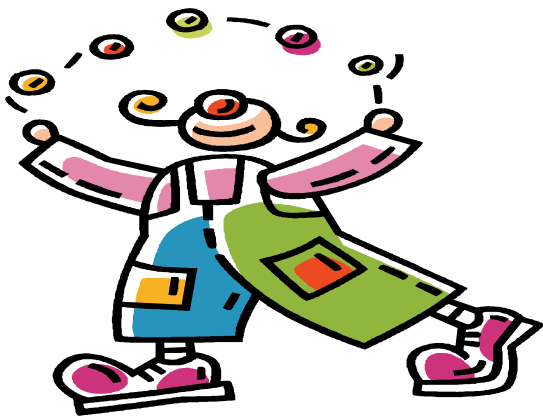
Holly Townsend and Ashley Paden
Co-Presidents

Inside this issue:

Dates to Remember 2
Box Tops/
Campbell's Labels

THANKS!!!

A big thank you to our scouts. Pack 459, Den 7 helped clean up and mulch the habitat area. Stop by and see the great job they did!



Get Ready for the
Colt Carnival
Sunday, October 17th
1pm - 5pm

Come hang out at the Colt Carnival for an afternoon of fun! Be sure to take a ride on the Super Chair or slide through the Wave of Fire. The little ones won't want to miss the Kiddie Pillar Crawl. Of course, don't forget the crazy hair and the carnival games! We will have bbq, pizza, sno-cones, cotton candy and treats from the Cake Walk. Get your arm-band for unlimited fun! (order form on last page of newsletter) Come enjoy your favorite activities and a few new ones!

Dates to Remember

Oct. 3-9	Fire Prevention Week
Oct. 4	PTA Meeting 9:30 AM Executive Meeting 10:00 AM PTA Meeting
Oct. 6	International Walk to School Day Wear Red, White & Blue
Oct. 7	Chik-Fil-A Spirit Night At Roswell Corners
Oct. 9	Fall "Hands On CCE" 8 AM—1 PM
Oct. 11-15	School Lunch Week
Oct. 11	Teacher Work Day No School
Oct. 12-13	5th Grade Trip Rock Eagle
Oct. 15	Corral Deadline
Oct. 17-23	Bus Safety Week Red Ribbon Week
Oct. 17	Fall Festival 1 PM—5 PM
Oct. 18	Bus Driver Appreciation Day Wear Red Day
Oct. 19	Wear Your Clothes Backwards
Oct. 20	Wear a Tie
Oct. 21	Wear a Cap
Oct. 22	Wear your favorite CCE Spirit Shirt Box Tops Due
Oct. 26	Shane's Rib Shack Give Back Night— 4th Grade 5:30-7:30 PM
Oct. 27	Picture Retake Day



Keep on Clipping!

Bring in your Box Tops and Campbell's Labels on Friday, October 22nd!

Please turn in items in a ziploc bag with student's name, grade and teacher.

The class with the highest percentage of participation and the class with the most items turned in will win prizes!

Be sure to turn in all Box Tops that have not expired!!

Campbell's Labels must have the UPC bar code.

www.boxtops4education.com

www.labelsforeducation.com

The Crabapple Crossing PTA publishes *The Corral* the last Friday of each month.

Crabapple Crossing Elementary



George B. Freiburger, Ed.S, Principal

Holly Townsend and Ashley Paden,
PTA Co-Presidents

Meg Gleason, Editor - *The Corral*

Crabapple Crossing Fall Festival



Colt Carnival!

Sunday, October 17th 1pm—5pm



We need you!

Volunteers are needed to help with games and rides.

Sign up with your classroom rep to help for an hour.

We appreciate your help.

Drink Donations

K Water **1st** Coke

2nd Diet Coke **3rd** Sprite

4th Flavored Soda

5th Water

Please cut out and send in to your child's teacher.



Ticket Pre-Order Form

Games and Rides require 2-8 tickets, Food & Drinks 1-8

Student Name _____

Teacher _____ Grade _____

50 cents each. Pre-Order and save!

- _____ 30 tickets: \$14
- _____ 50 tickets: \$23
- _____ 80 tickets: \$37
- _____ 100 tickets: \$46

NEW

Unlimited Rides and Games only Wristbands!

Pre-Order by October 13th and save \$5!

\$20 each

_____ Quantity

** Please make checks payable to **CCE PTA** ** Wristbands **do not** include food, prizes, face painting and hair booth

After October 13 wristbands will be \$25