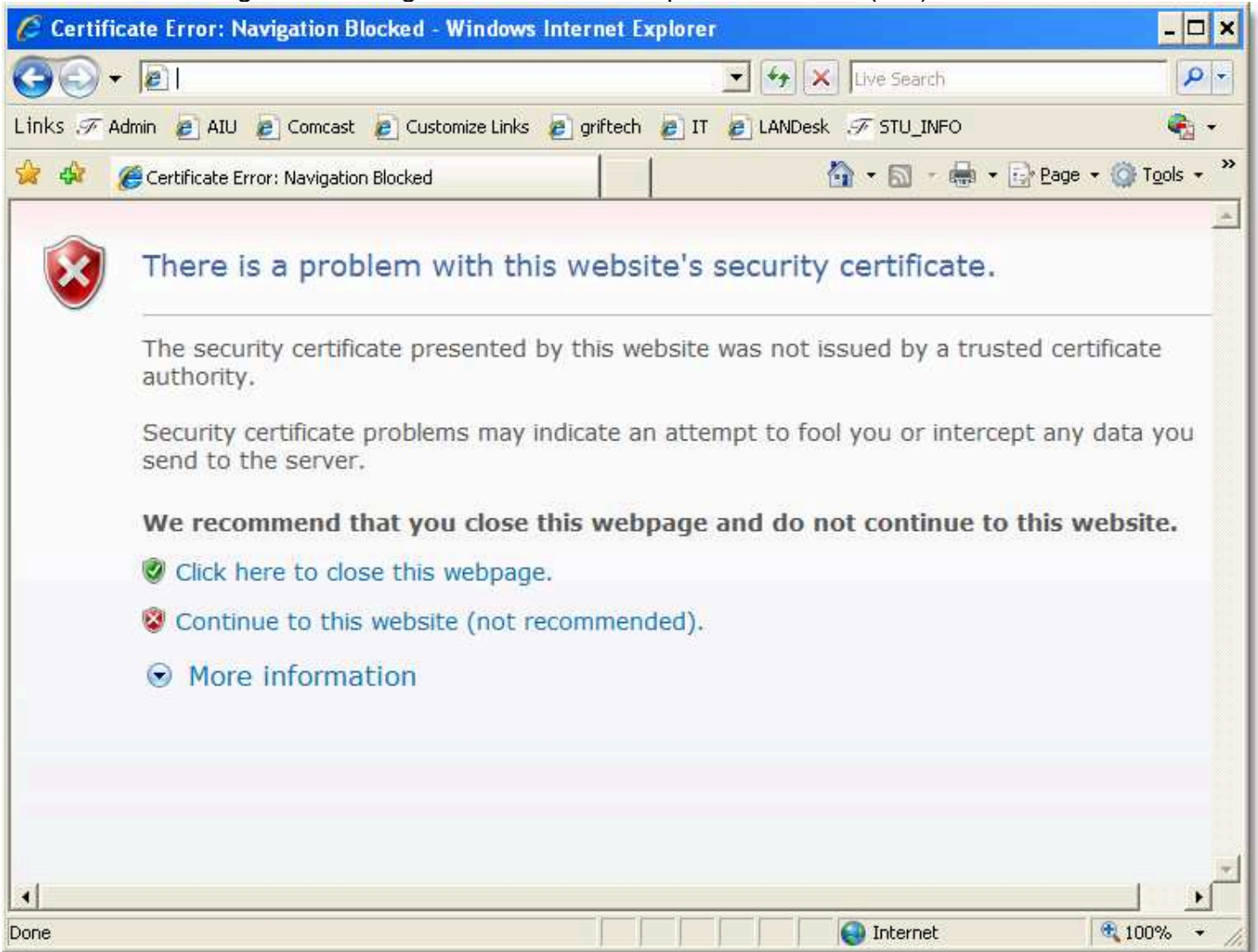


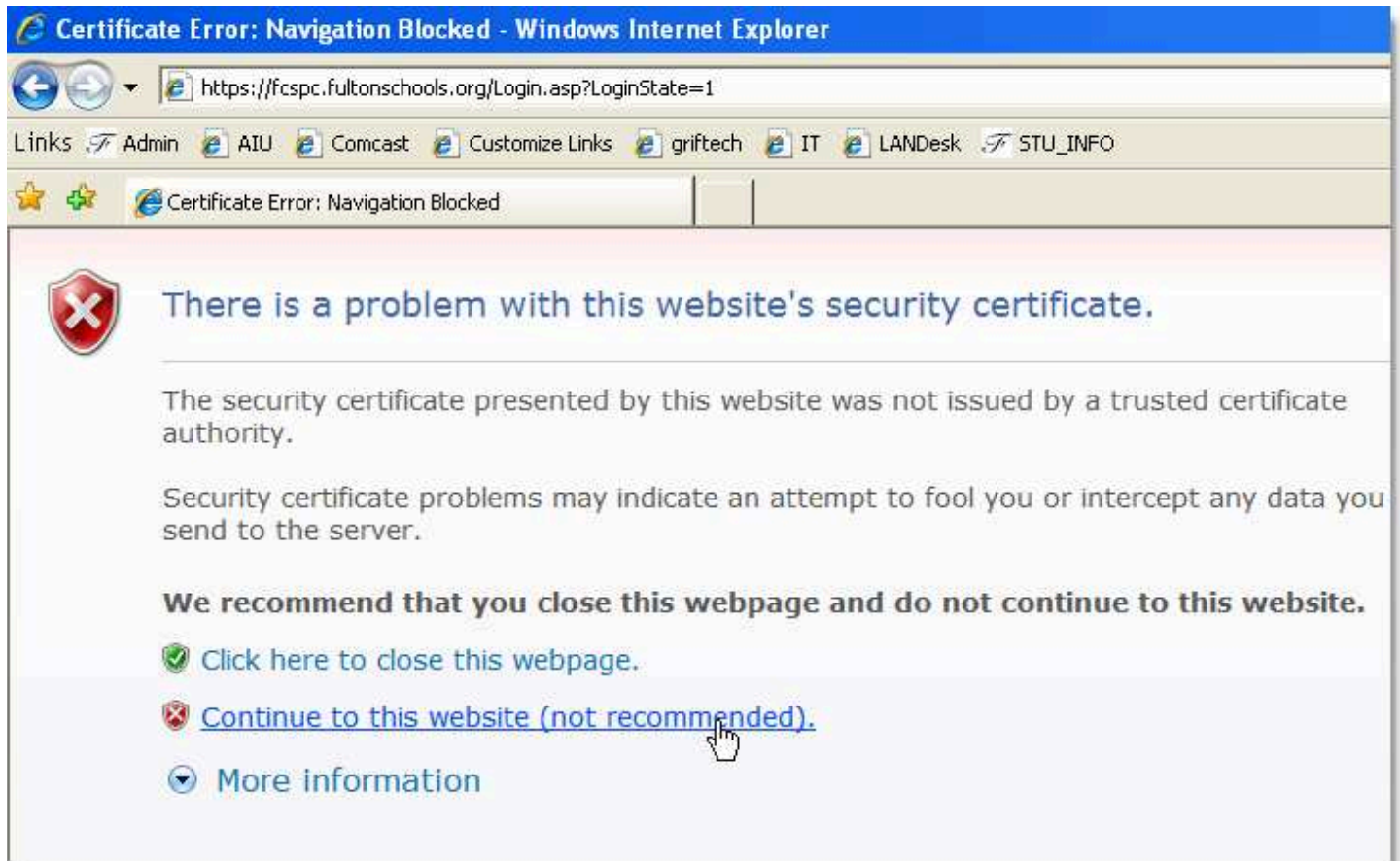
Fulton County Schools – Parent Connect

Fulton County Schools creates internal security certificates for the Parent Connect servers to ensure that users are connecting to a valid site that will keep private information safe. Because the school system's certificate warehouse is not registered with one of the major certificate authorities, users have been receiving the following error on Internet Explorer version 7 (IE7):



This message is not one to ignore in your regular everyday activities. However, if the URL is entered appropriately to gain access to this particular site, the certificate issued by Fulton County Schools can be trusted. To alleviate this message appearing again, please take the following steps **(NOTE: This is ONLY for Fulton County Parent Connect websites)**:

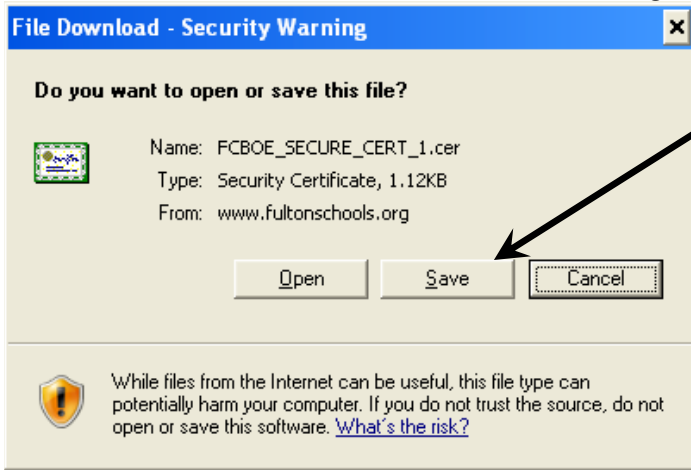
If you are using Internet Explorer version 7, after navigating to the Parent Connect website and clicking on the login button, you will see the following screen. Click on the Continue to this website link:



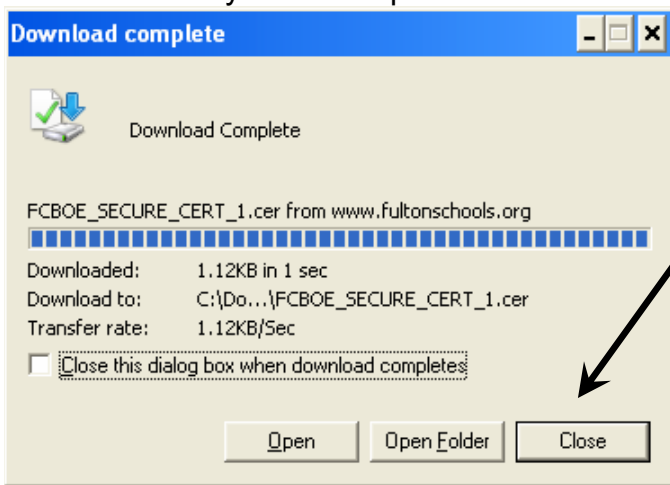
For users of Internet Explorer version 6, the following window will appear – click YES:



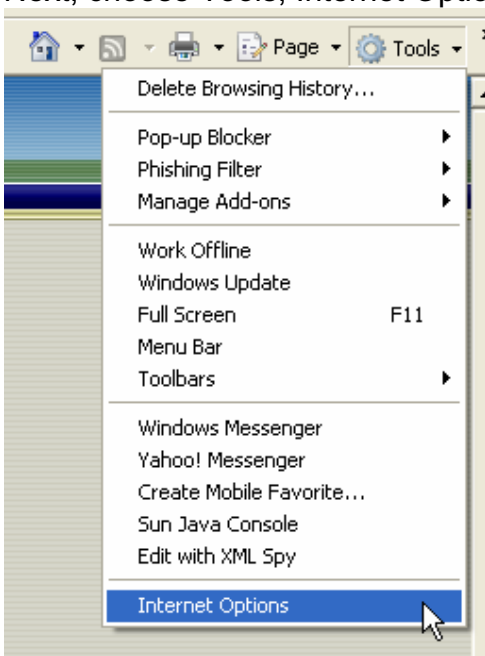
Once you log into the site, there will be a link to the document you are currently reading and 2 secure certificates. Click on the first link. The following window will appear – choose SAVE:



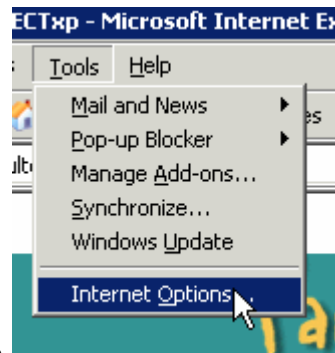
Save the file to your desktop. On the next window, click CLOSE:



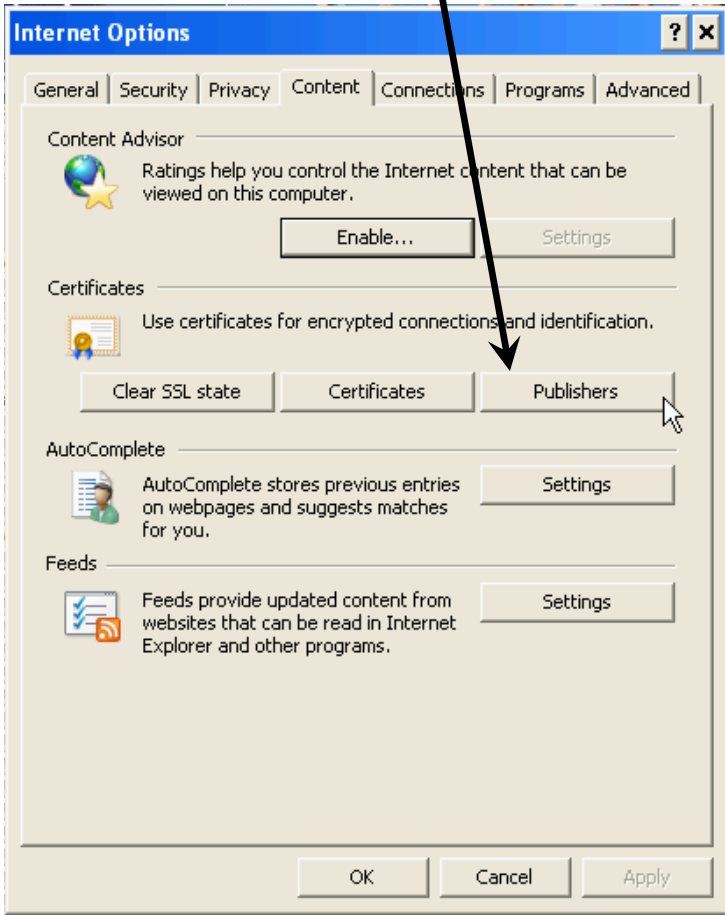
Next, choose Tools, Internet Options and click on the Content tab:



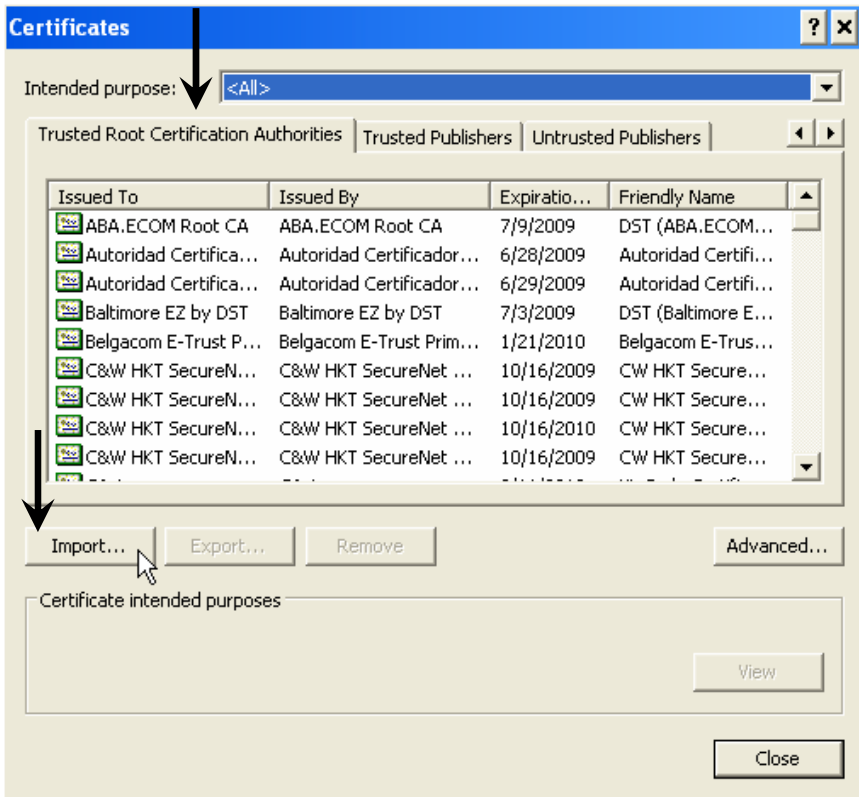
OR



Click on the Publishers button



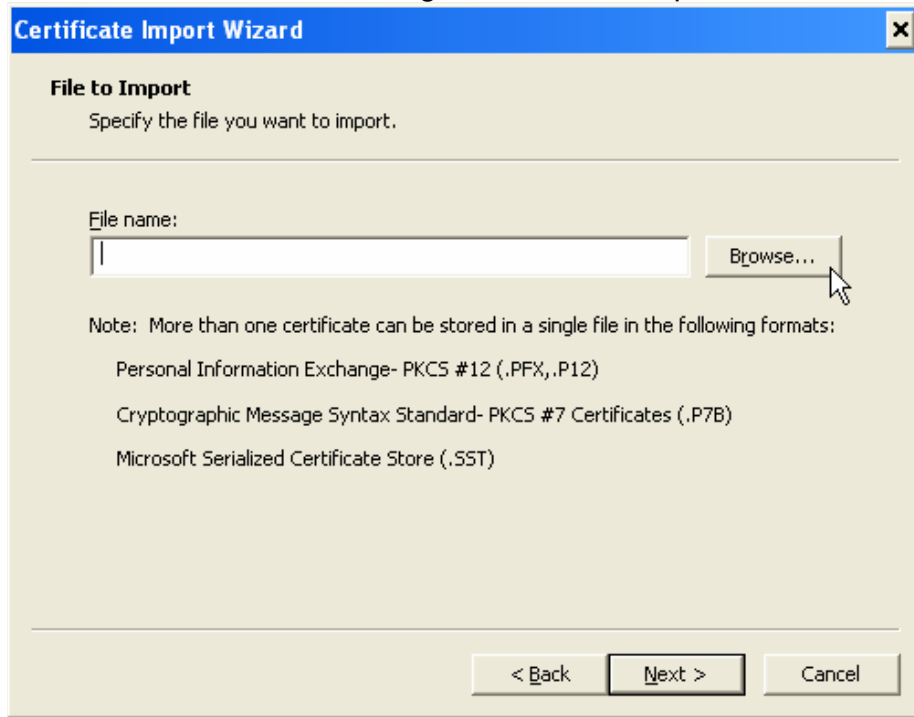
Click the Trusted Root Certificate Authorities Tab and then click the Import button.



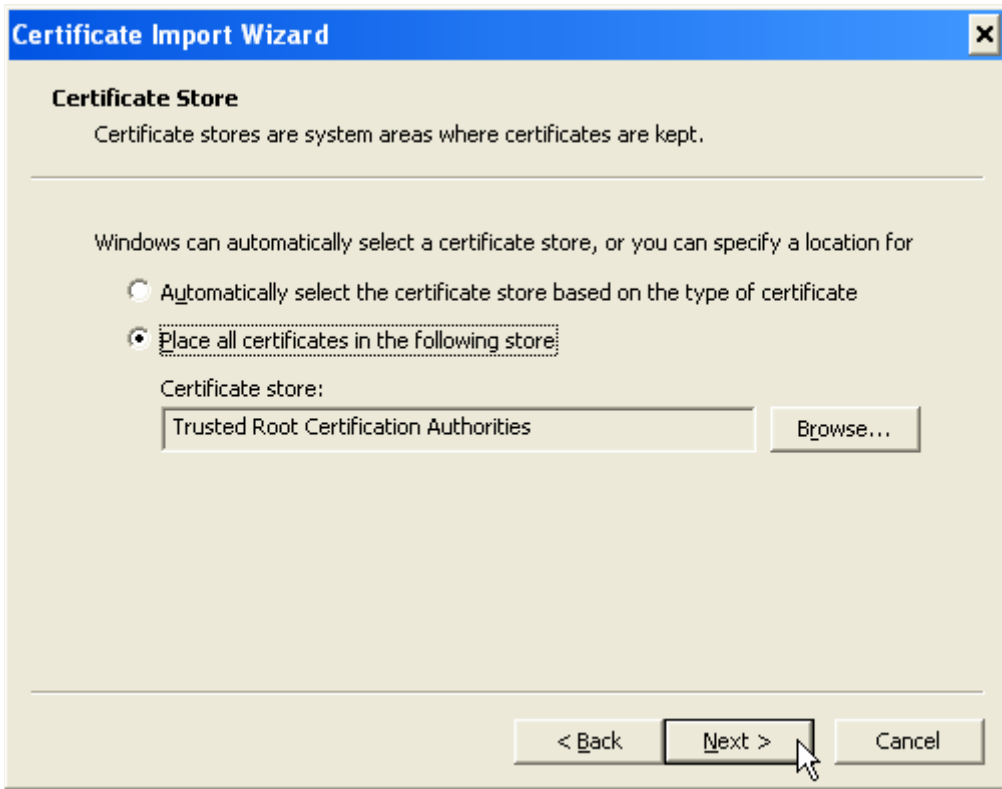
Click Next:



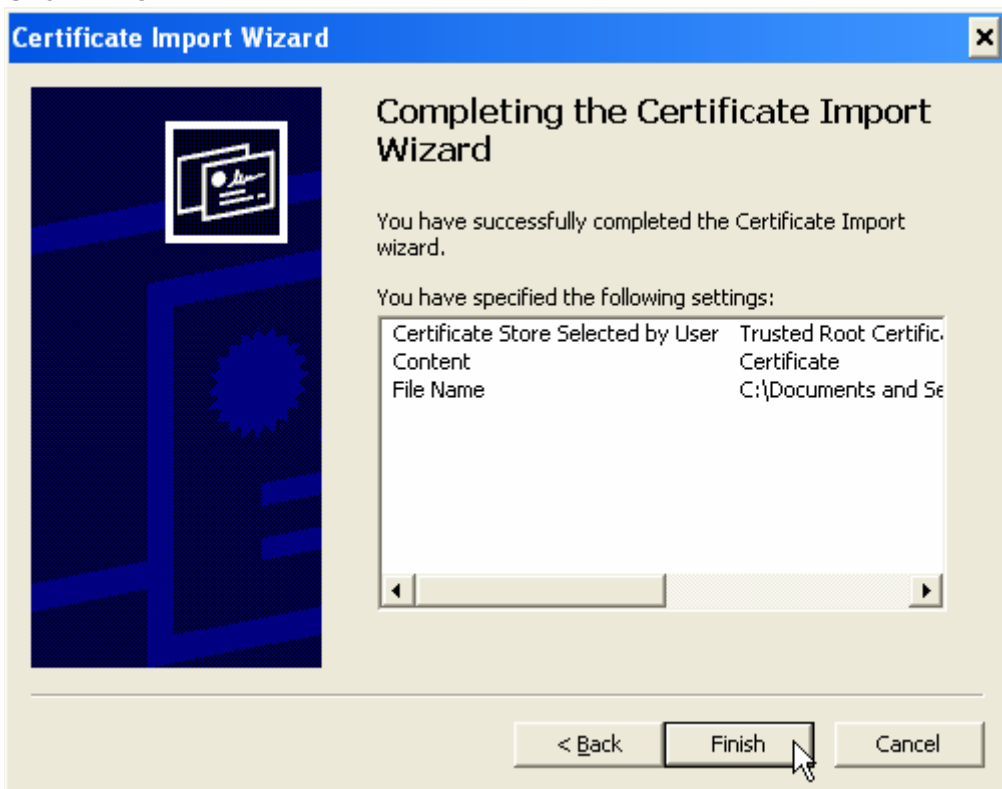
Click the Browse button, navigate to the desktop and choose the first certificate, Click Next:



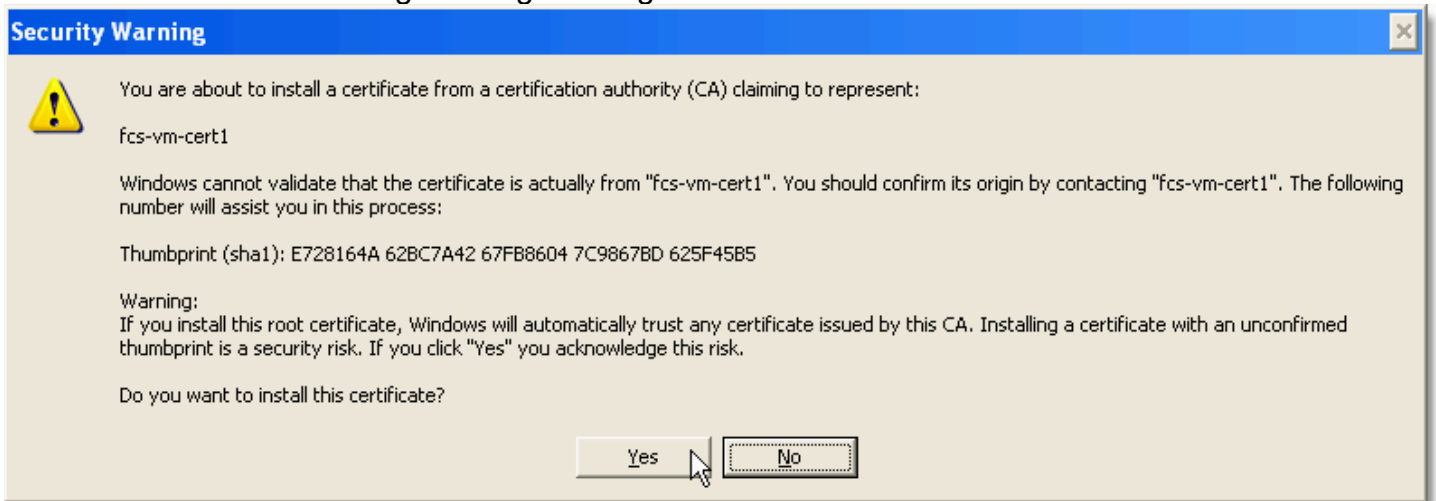
Click Next:



Click Finish



You will receive the following warning message – click YES:



Click OK:



Click Close on the Certificate window and OK to close Internet Options.
Repeat the steps starting on page 3 for the second certificate.

You should then close Internet Explorer, open it back up and navigate back to the Parent Connect website. When you click on login this time, you should no longer receive the warning message on the computer you are using.