

---

# Fulton County Schools System Update

*Dr. Cindy Loe  
Superintendent*

Board of Education  
September 8, 2009

# **Fulton County Schools Mission**

---

**Our Mission is to educate  
every student to be a responsible,  
productive citizen.**

# **Fulton County Schools Vision**

---

**Our Vision is for all students to learn to  
their full potential.**

# We Believe In

---

- **Excellence**
- **Trust and Honest Communication**
- **Common Understanding**
- **Personal Responsibility**
- **Commitment**
- **Academic Achievement**
- **Measured Results**
- **Continuous Improvement**
- **Safe and nurturing environment**
- **Involved family, community and staff**
- **Transparency and Accountability**

# Value Statements

---

- **Each Fulton County school will educate every student to his/her fullest potential.**
- **Fulton County will engage parents as key partners in the educational process.**
- **Each Fulton County school will be the preferred school for its students and parents.**

# Value Statements

---

- **Each Fulton County school will provide greater value for each child's educational experience when compared to top-performing public and private schools in the nation.**
- **Fulton County schools will prepare each student to excel in a rapidly changing global society.**

# 2009-2010 Facts and Figures

---

## ■ Number of Schools

58 Elementary Schools, grades K-5

19 Middle Schools, grades 6-8

16 High Schools, grades 9-12

6 Start-up Charter Schools

**99 Total**

# 2009-2010 Facts and Figures

---

## ■ **Employees**

More than 12,000 full-time personnel

More than 6,800 certified personnel

*(those who hold teaching or administrative certifications)*

## ■ **Systemwide Enrollment**

90,104

# 2009-2010 Facts and Figures

---

## ■ FY10 General Fund Budget

\$856,442,124

| ■ FY10 Tax Levy | <u>FY10</u>   | <u>Change from FY09</u> |
|-----------------|---------------|-------------------------|
| M&O             | 17.502        | +1.099                  |
| Debt Service    | 0.000         | -1.099                  |
| <b>Total</b>    | <b>17.502</b> | <b>-0.000</b>           |

# 2009-2010 Facts and Figures

---

| <b>Student-Teacher Ratio</b> | <b>Fulton Avg.</b> | <b>State Max.</b> |
|------------------------------|--------------------|-------------------|
| Kindergarten (w/parapro)     | 19                 | 22                |
| Grades 1, 2 and 3            | 20                 | 23                |
| Grades 4 and 5               | 25                 | 30                |
| Grades 6-8                   | 25                 | 30                |
| Grades 9 through 12          | 24                 | 32                |

# 2009-2010 Facts and Figures

---

## ■ 2009 Graduation Data

- Graduate rate: 89%
- Total Number of Graduates: 5,203
- Attending college or tech schools: 90%
- Approximate amount of scholarships awarded: \$99.7 million

# Major Events and Issues in 2009-2010

---

- Value-added data for schools and departments
- SACS Re-accreditation
- Facilities Condition Assessment
- Educational Specifications Update

# Major Events and Issues in 2009-2010

---

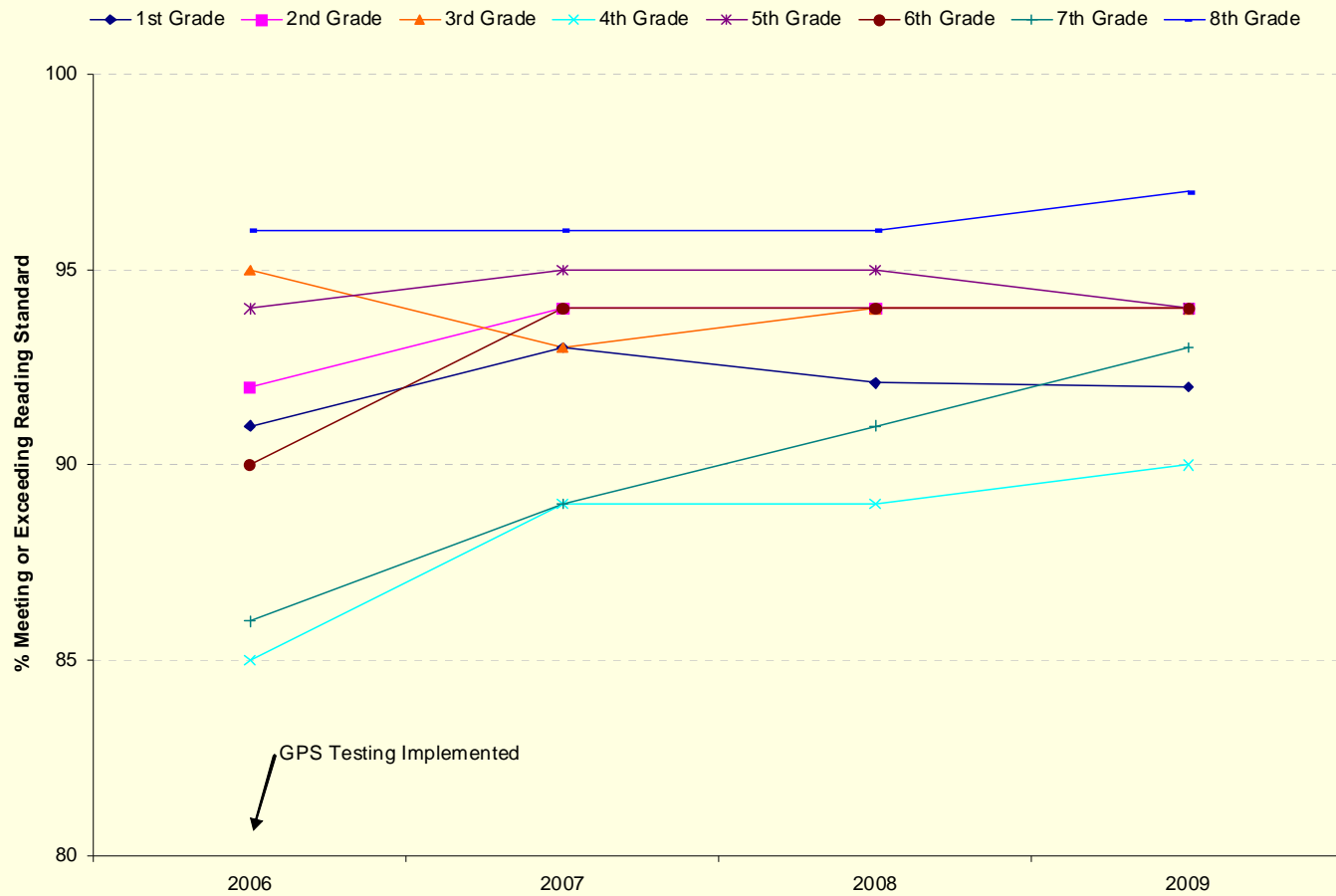
- Employee and Manager SAP Self-Service
- New Learning Management System
- SunGard Student Information System
- Web Site Redesign
- Continuing budget challenges

# CRCT Results

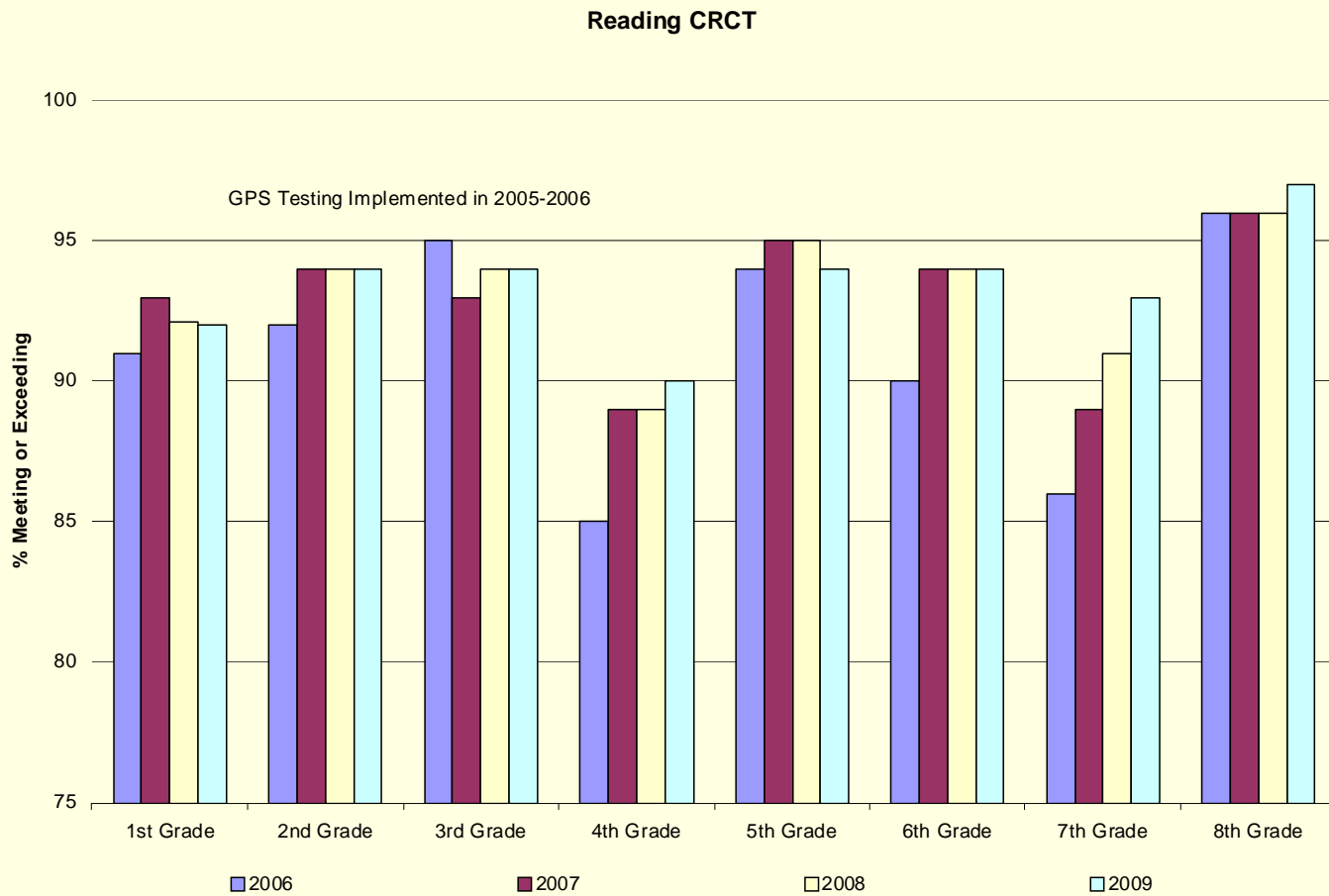
---

- Administered in the spring to grades 1-8, the examinations are aligned to the Georgia Performance Standards and the results are used to determine Adequate Yearly Progress for the No Child Left Behind Act.

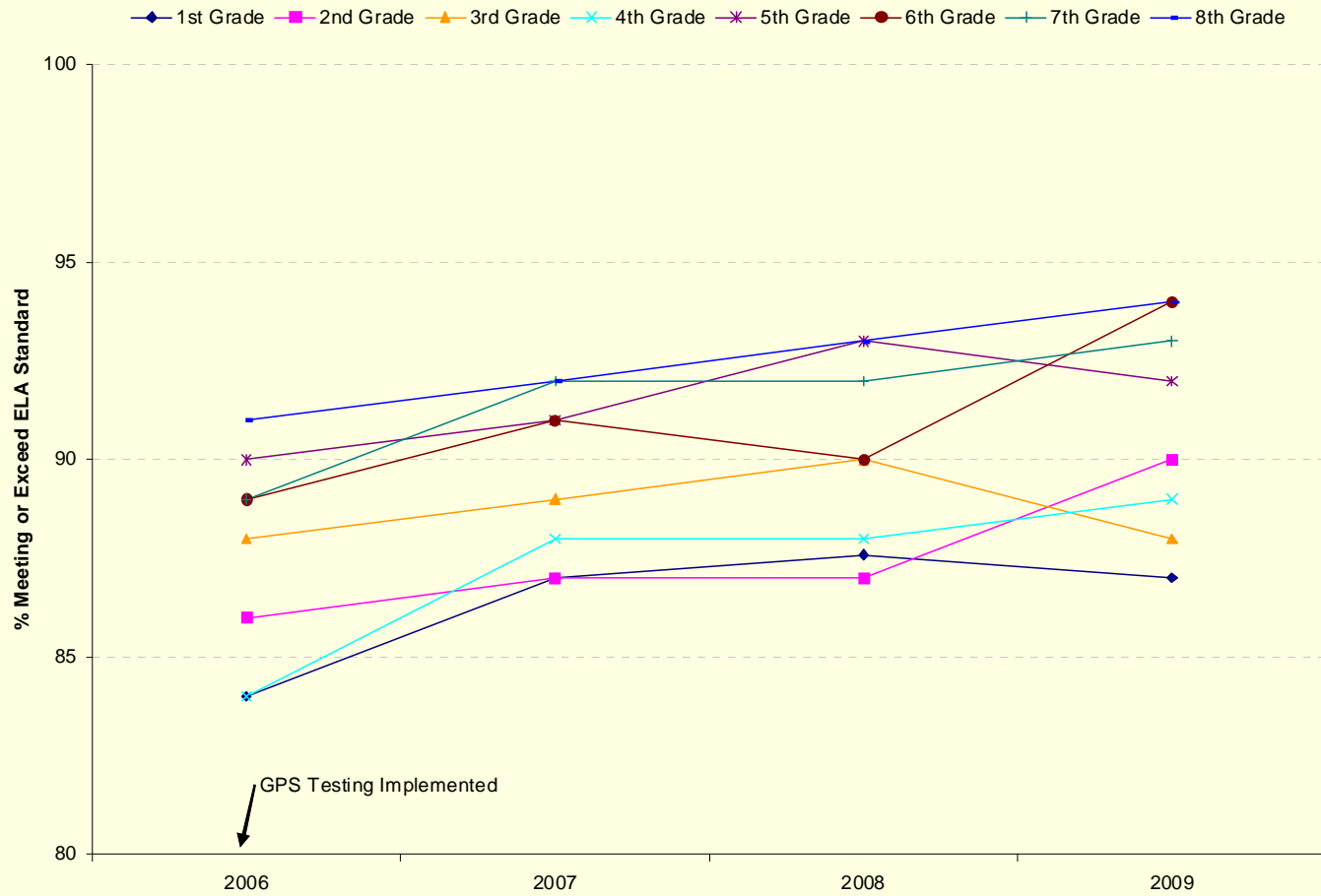
# Reading – CRCT Line Chart



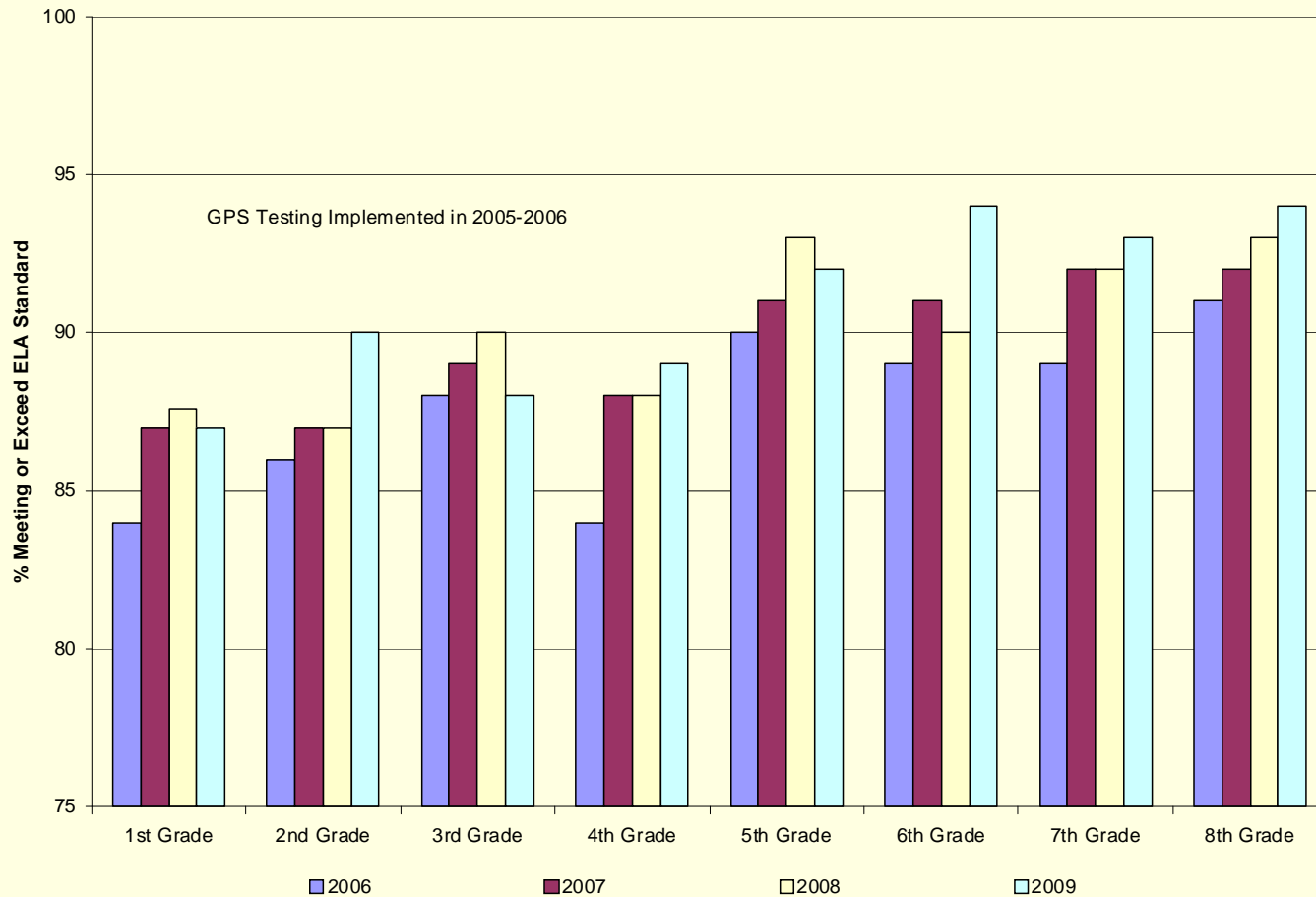
# Reading - CRCT Bar Chart



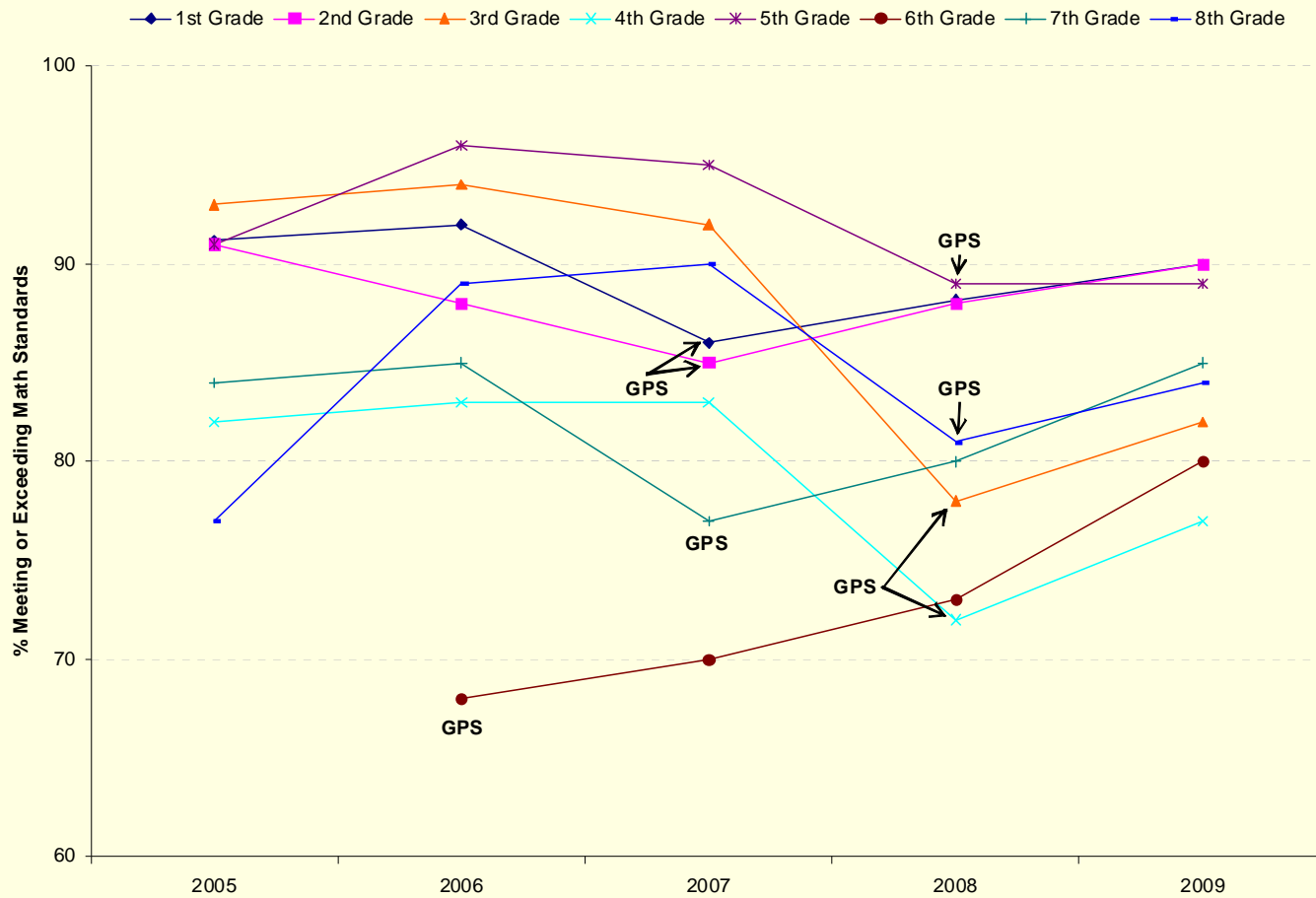
# ELA – CRCT Line Chart



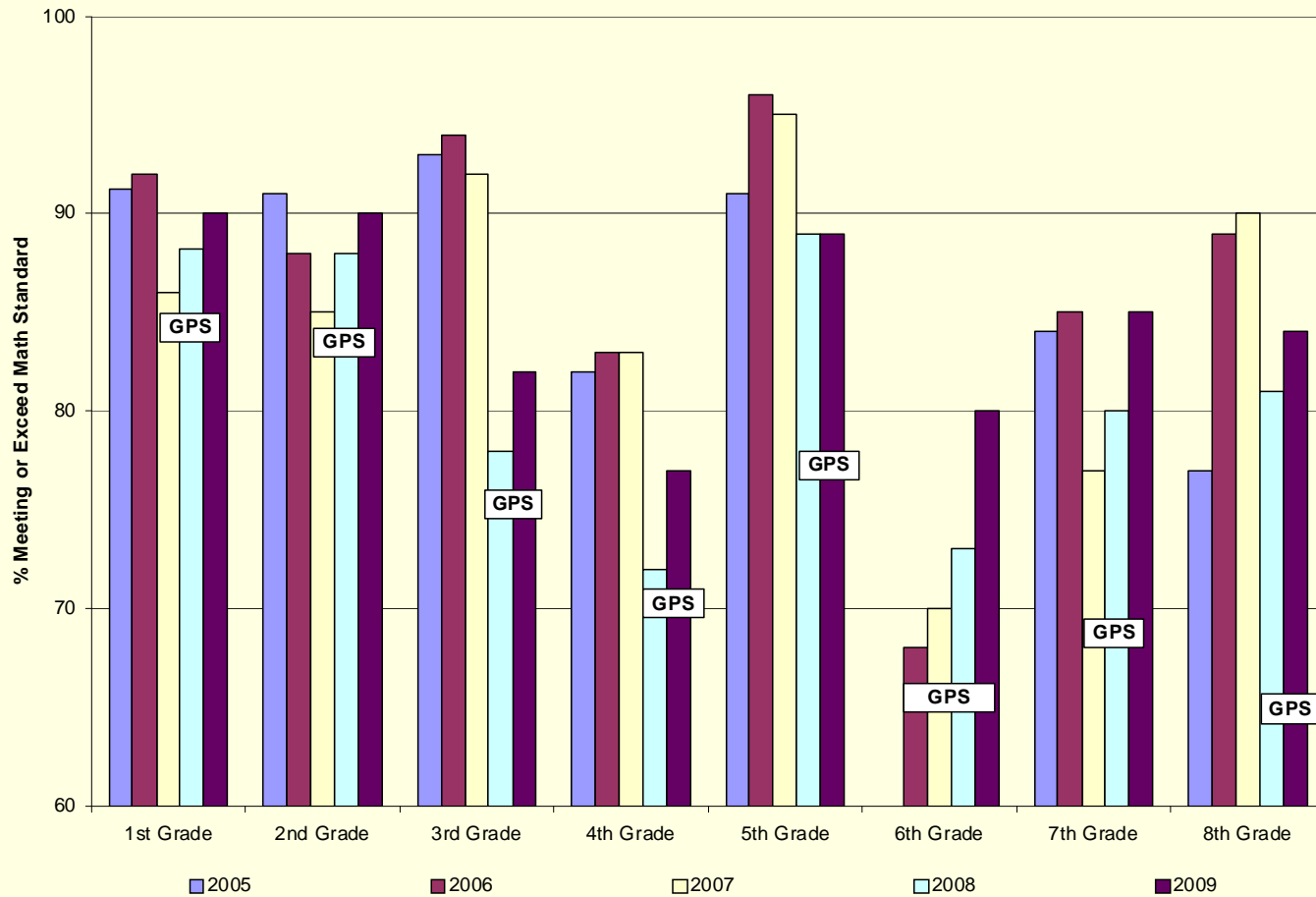
# ELA - CRCT Bar Chart



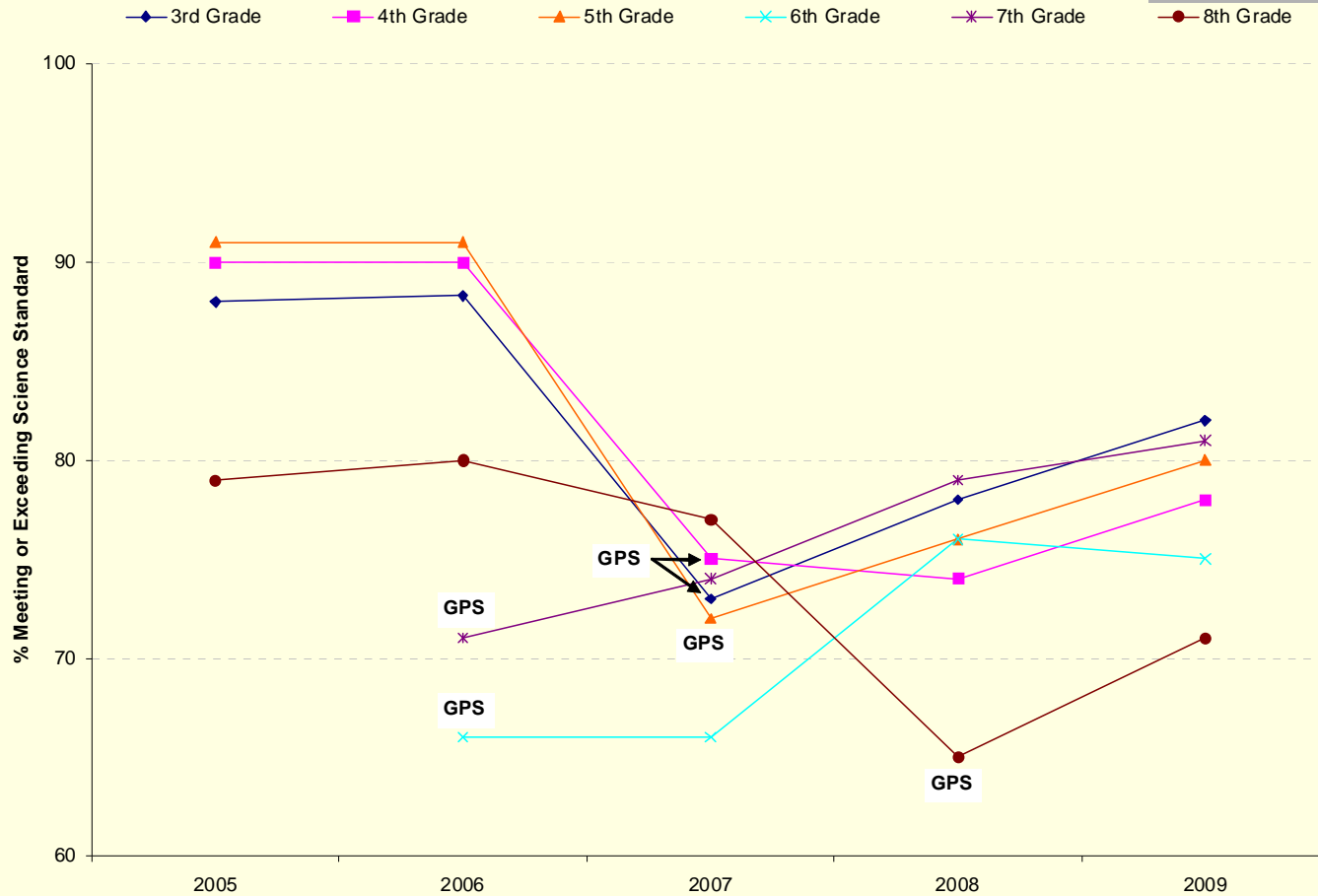
# Math - CRCT Line Chart



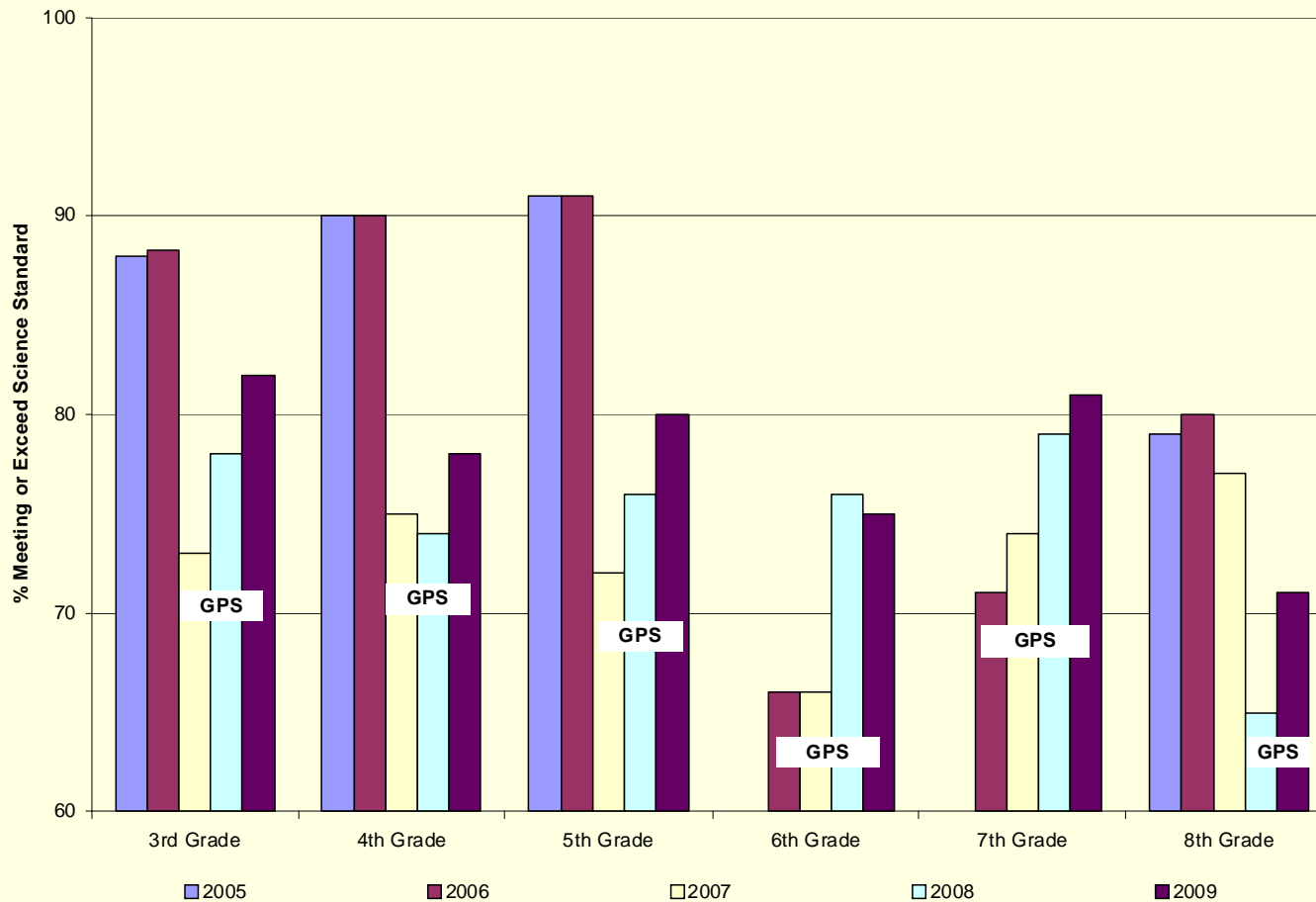
# Math - CRCT Bar Chart



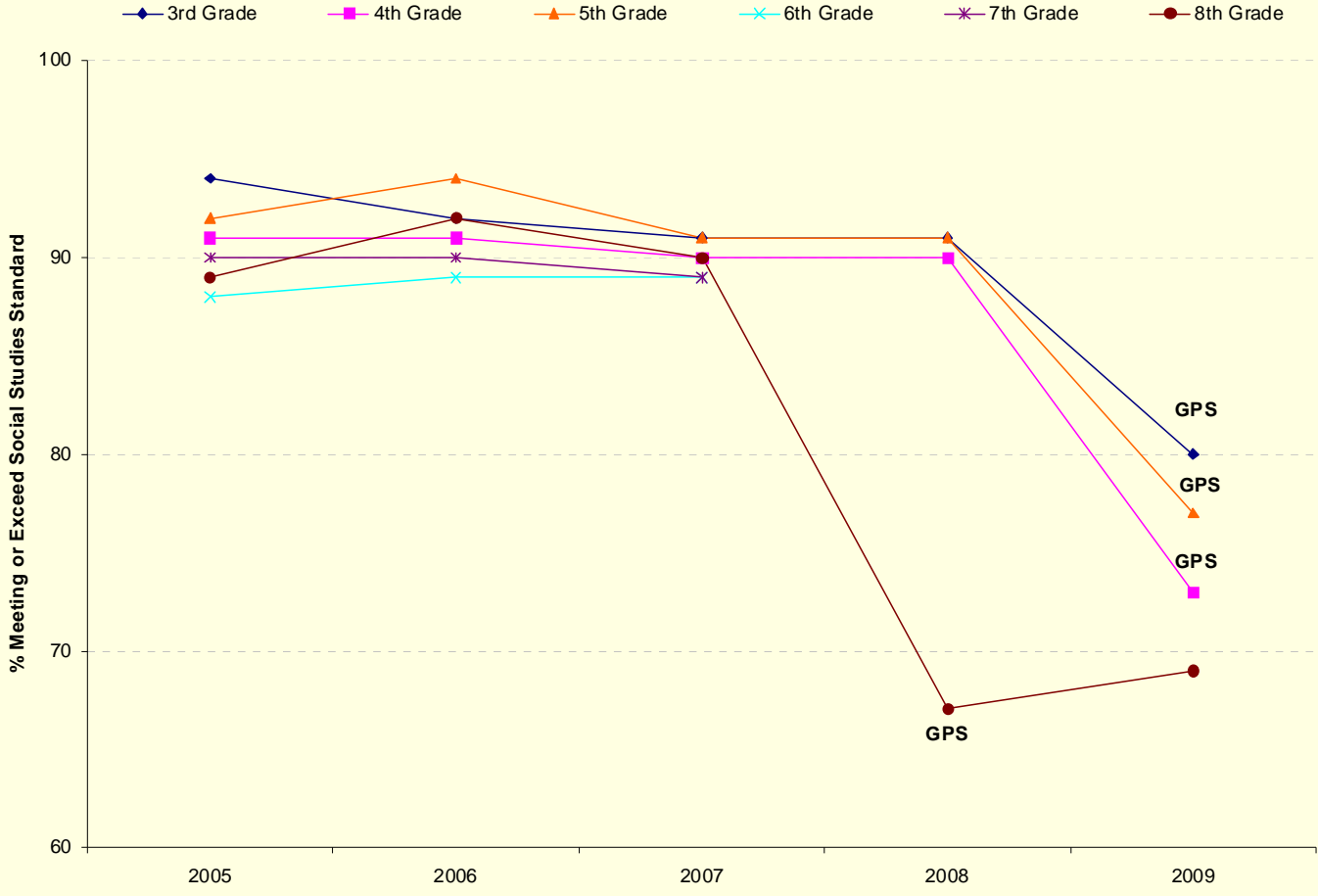
# Science – CRCT Line Chart



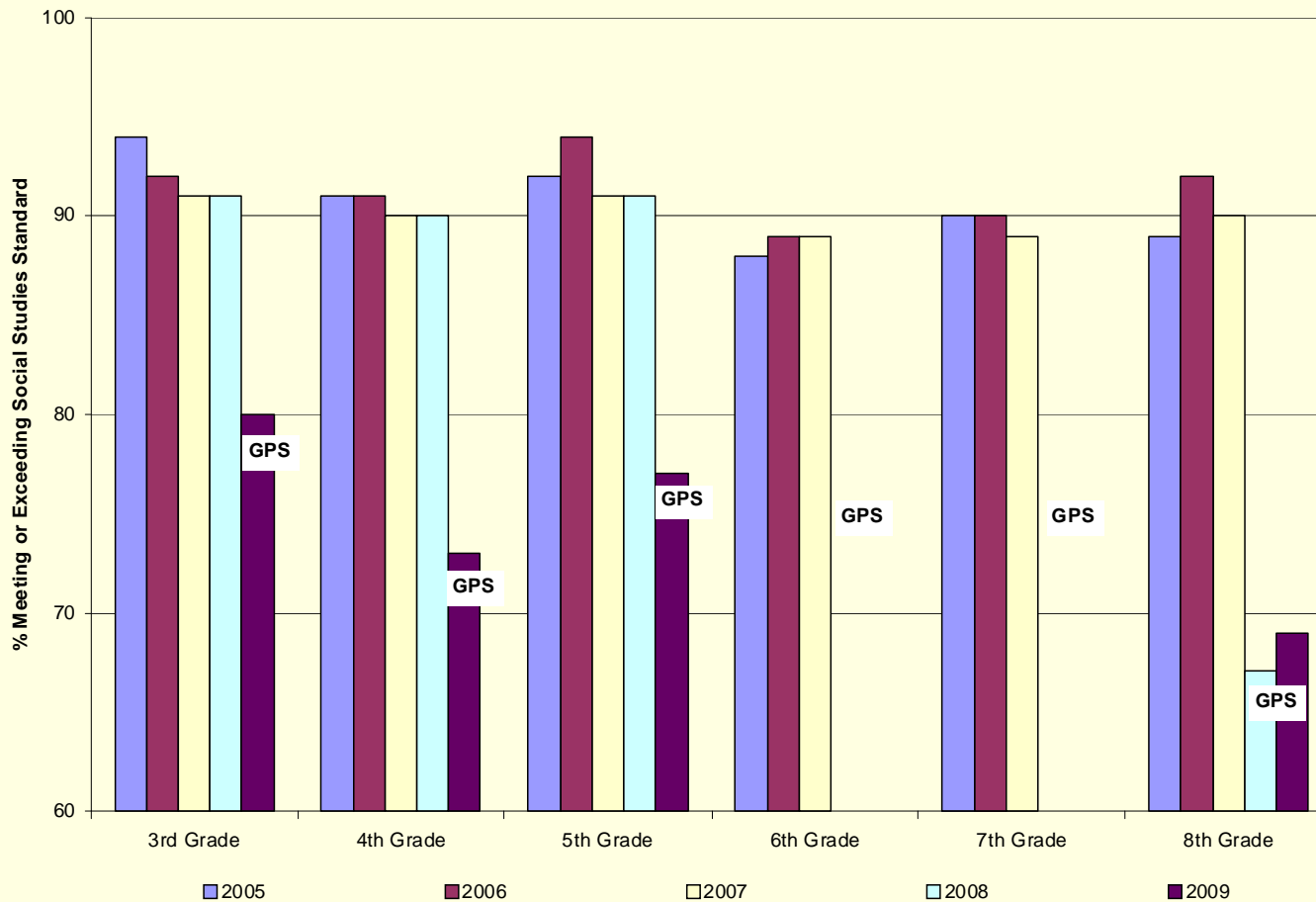
# Science – CRCT Bar Chart



# Social Studies – CRCT Line Chart



# Social Studies – CRCT Bar Chart

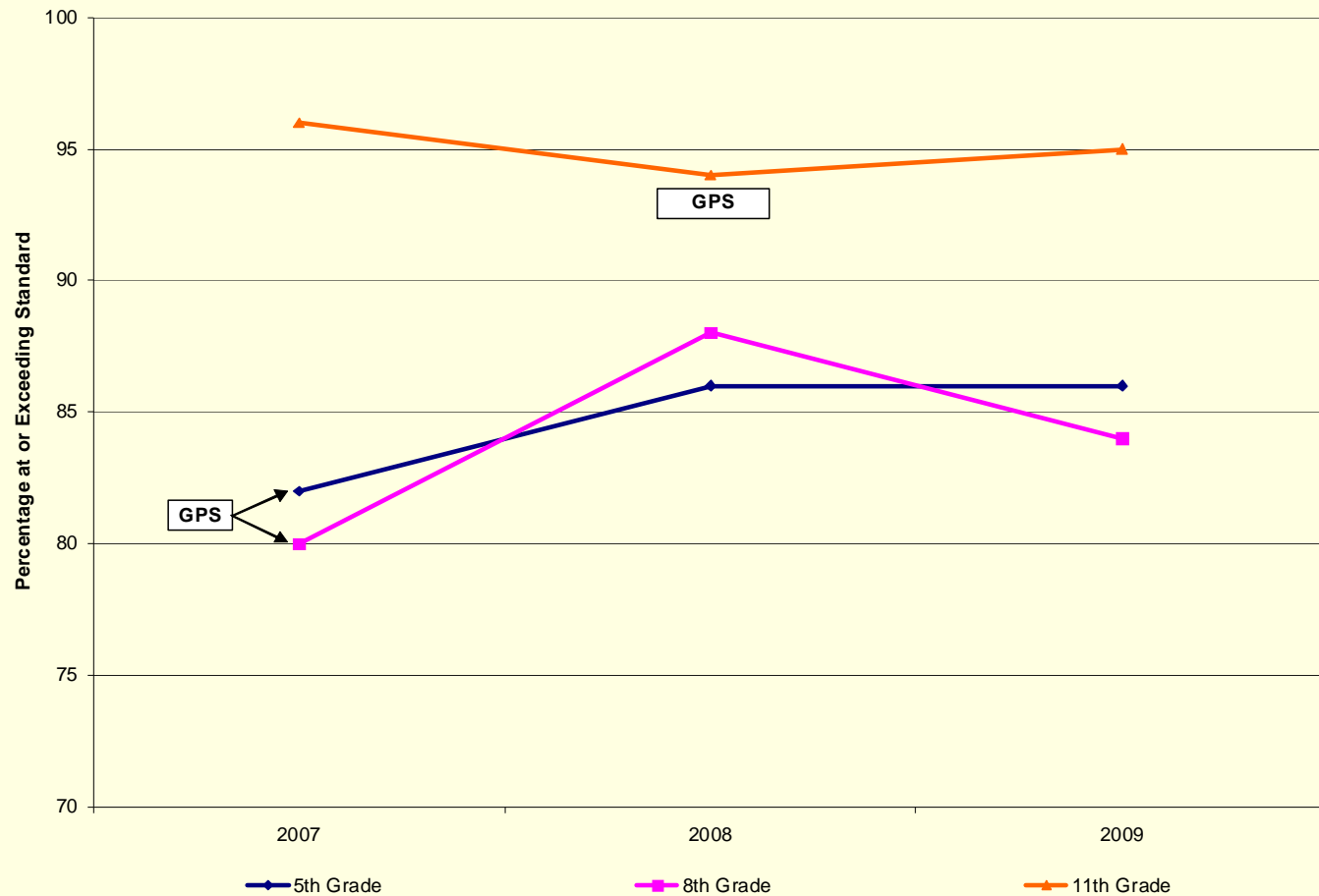


# Writing Assessments

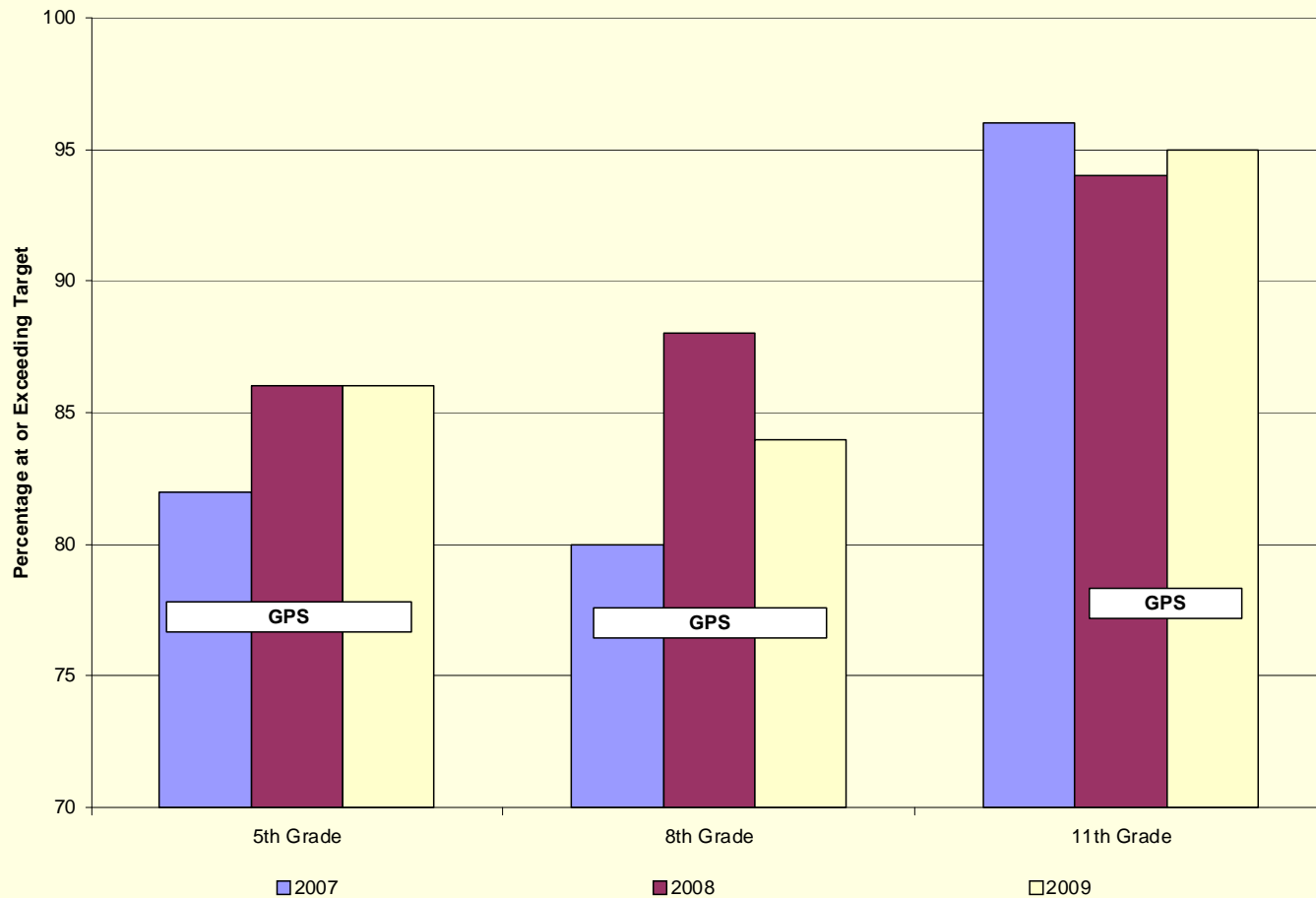
---

- Students in the 5<sup>th</sup>, 8<sup>th</sup> and 11<sup>th</sup> grades are given a State Writing Assessment annually. They are scored as Not meeting, On, or Exceeding the State Standard.

# 5<sup>th</sup>, 8<sup>th</sup>, and 11th Grade Writing



# 5<sup>th</sup>, 8<sup>th</sup>, and 11<sup>th</sup> Grade Writing

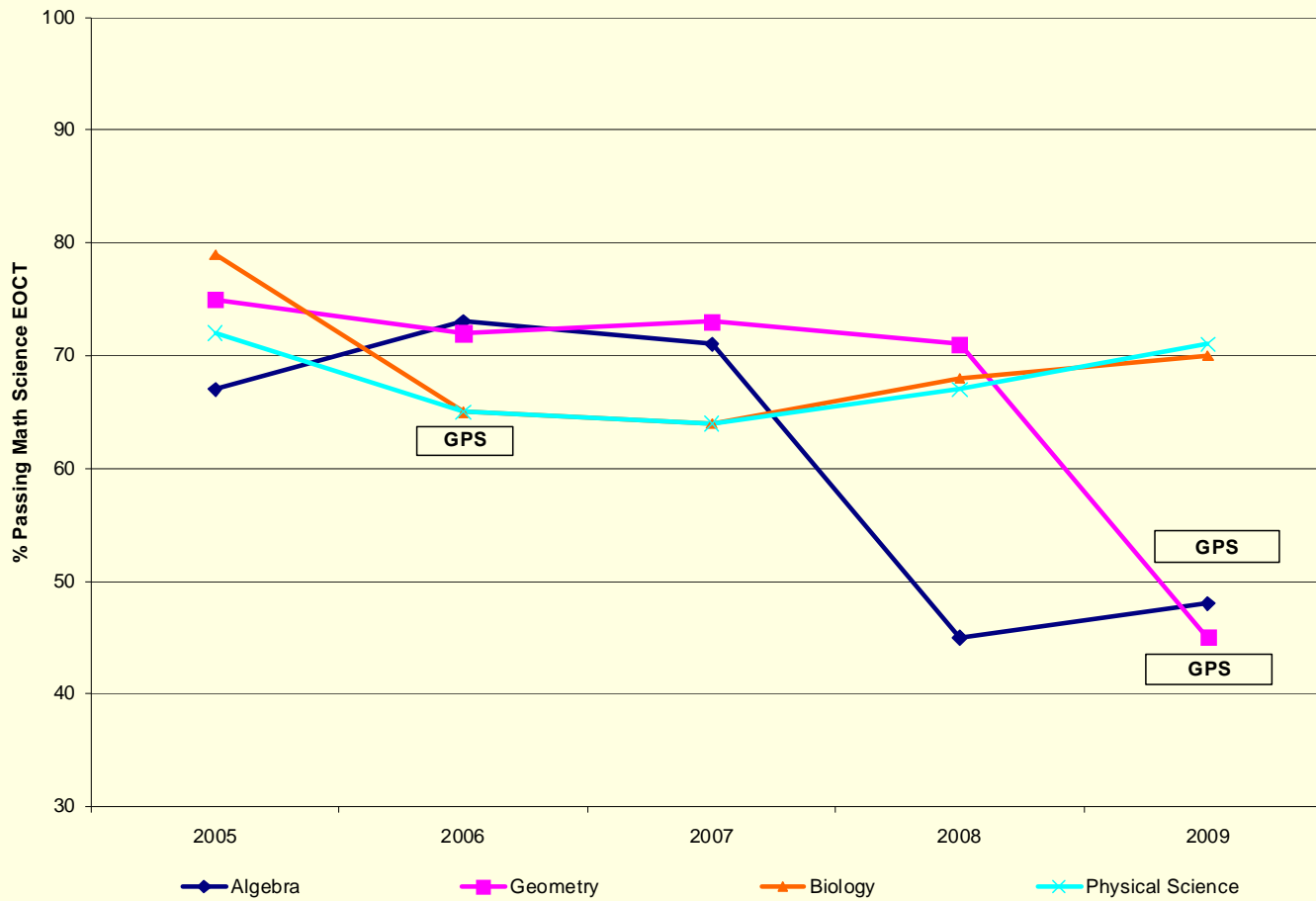


# End Of Course Tests

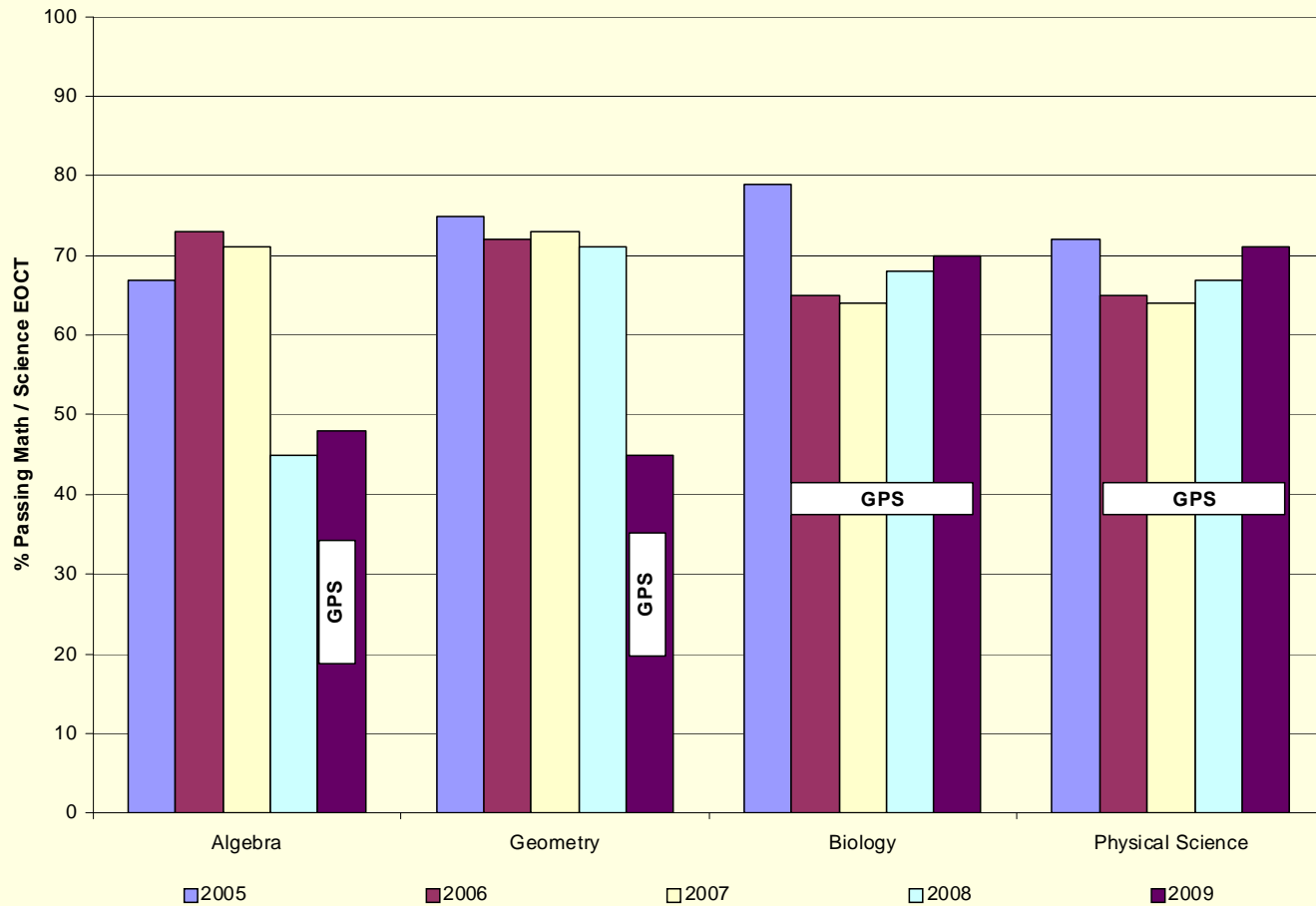
---

- Given at the end of the year for certain High School courses, these examinations factor into the students' final grades and the results provide system feedback on High School Student Performance

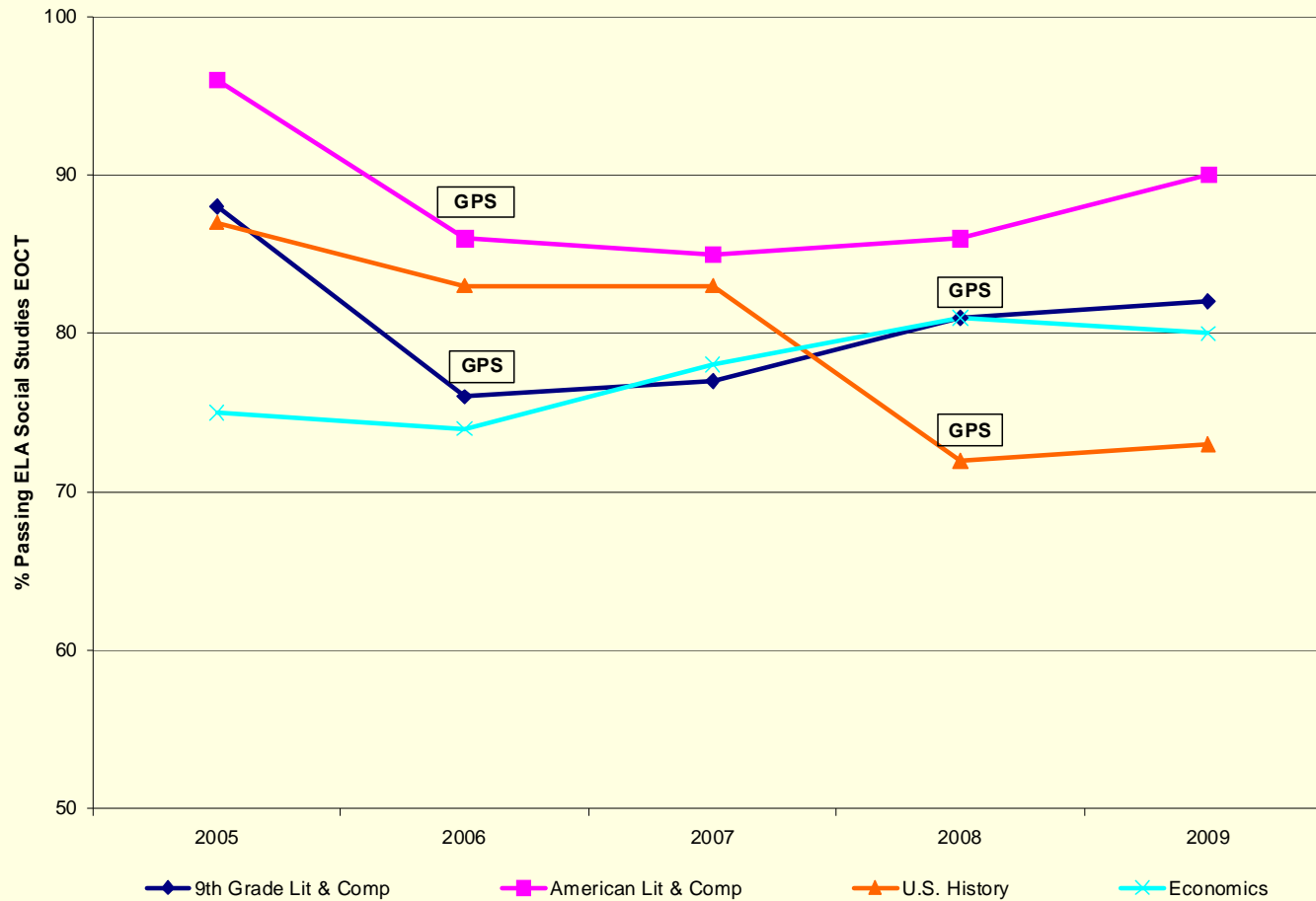
# EOCT – Math / Science



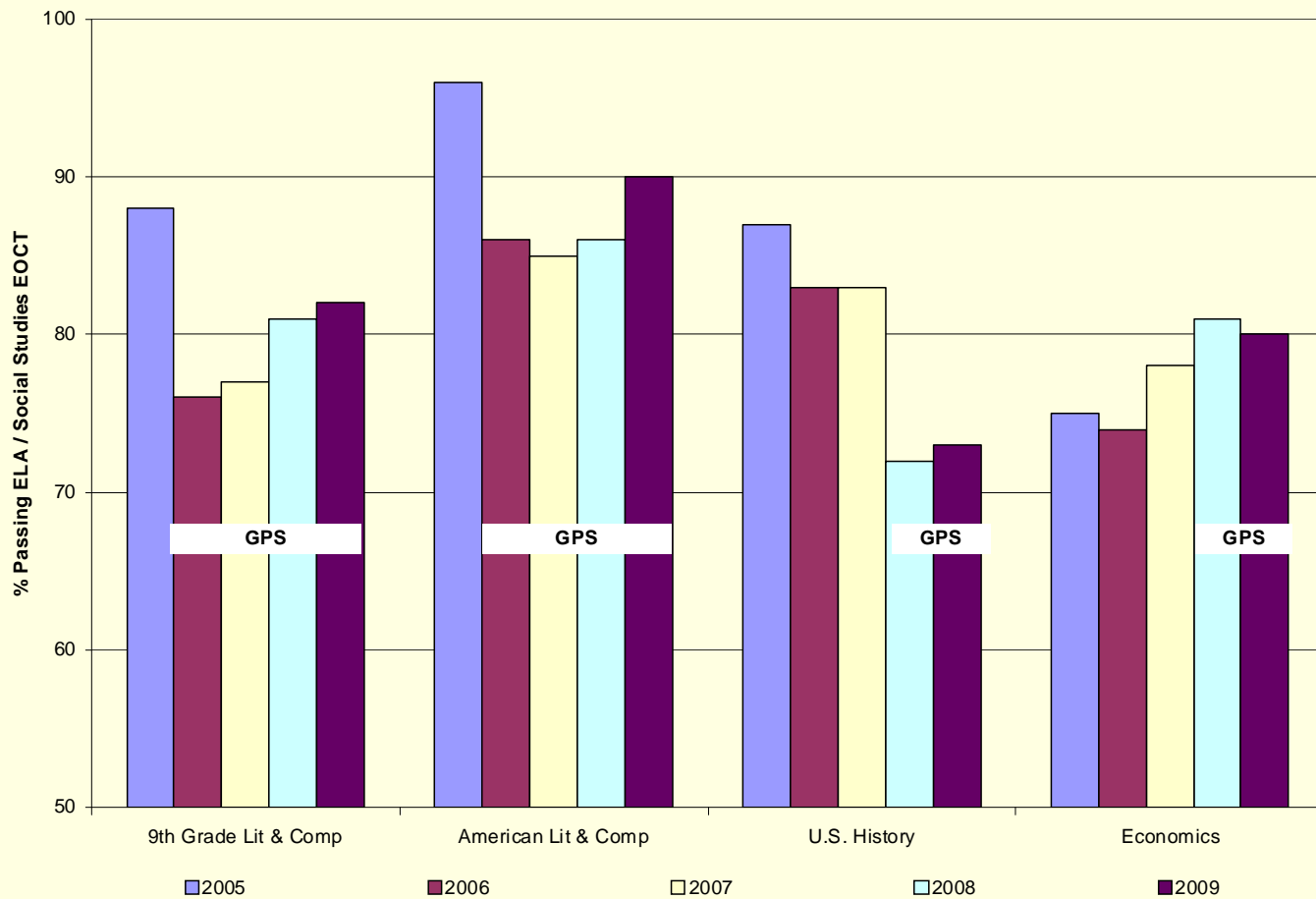
# EOCT – Math / Science



# EOCT – ELA / Social Studies



# EOCT – ELA / Social Studies

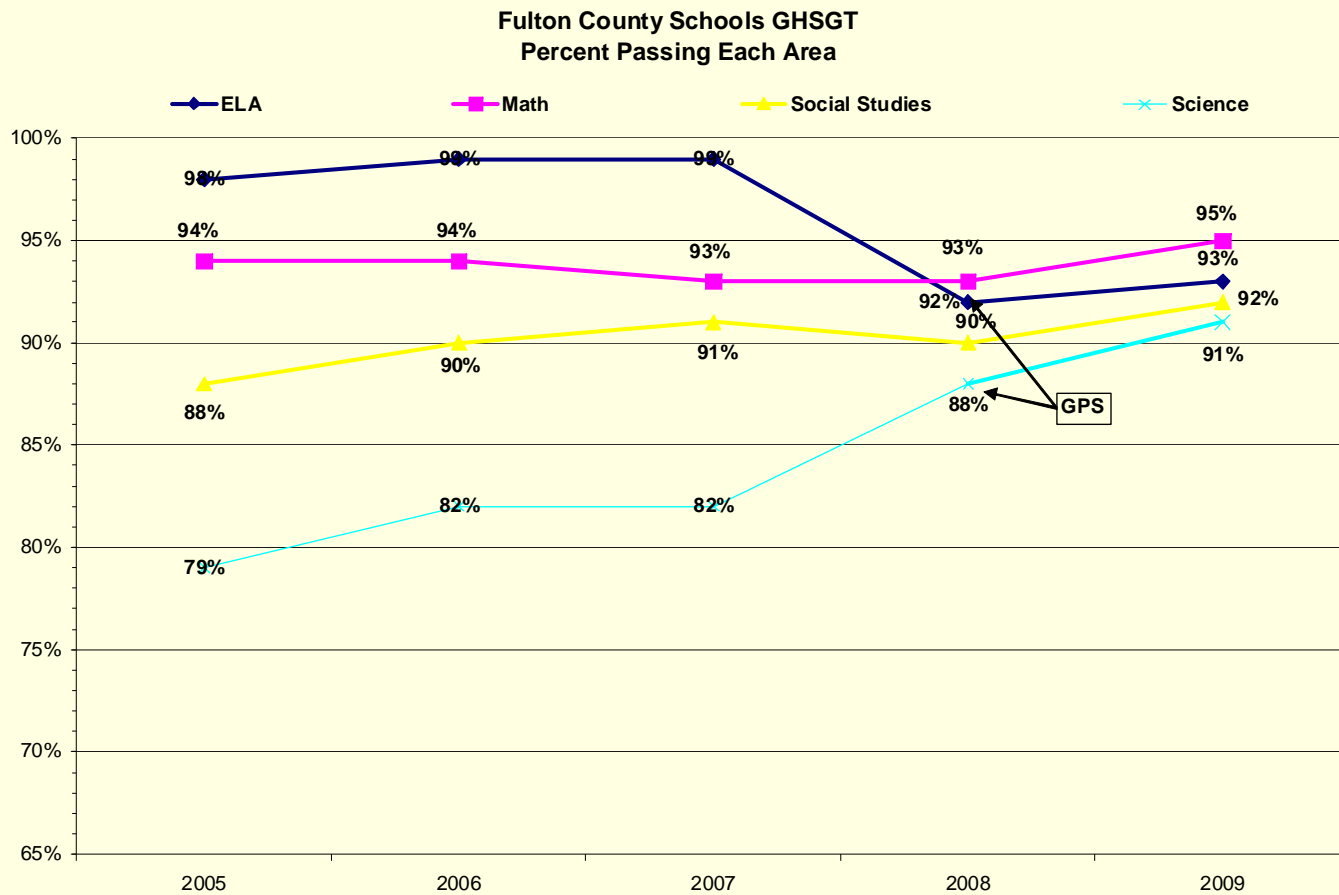


# Georgia High School Graduation Test

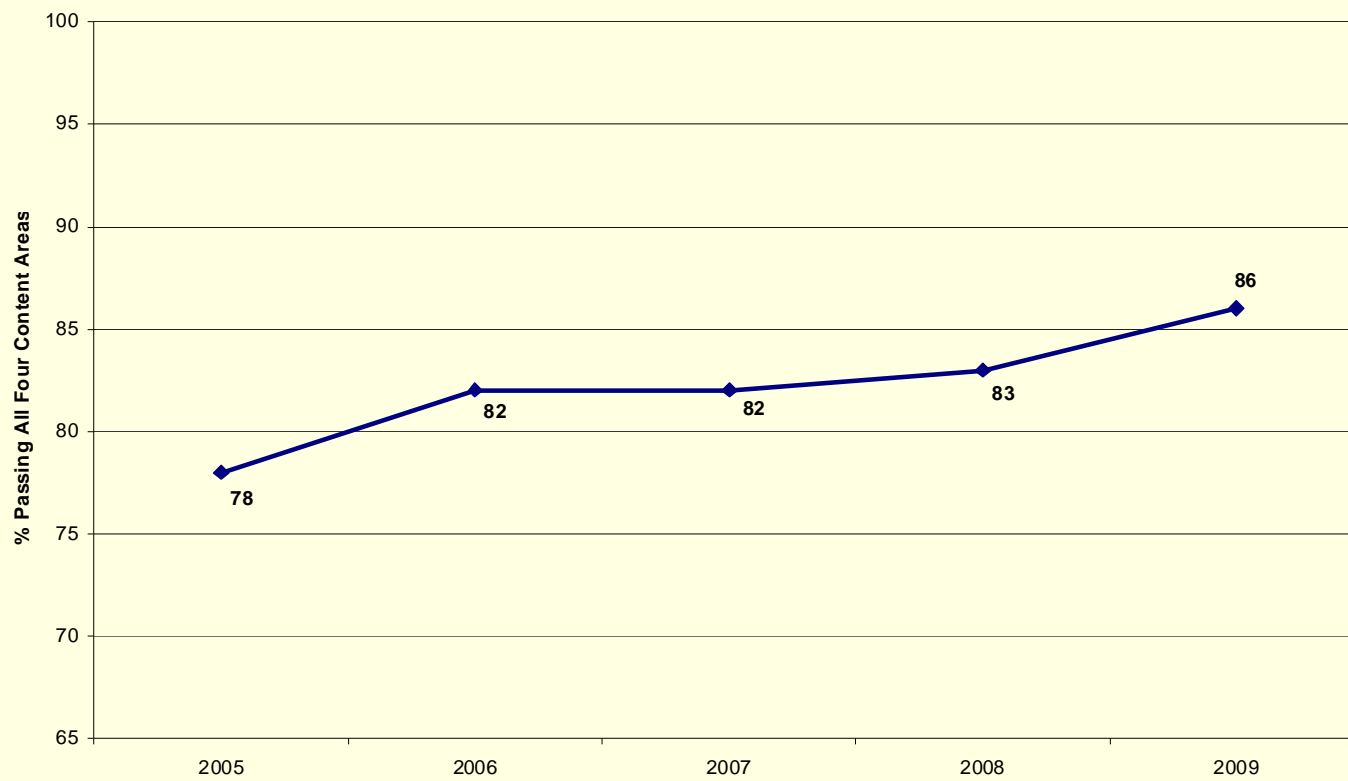
---

- Given in the Spring, these examinations are used for Adequate Yearly Progress as well as a requirement for students to receive a Georgia HS Diploma

# GHSGT – All Content Areas



# GHSGT – Combined Pass Rate

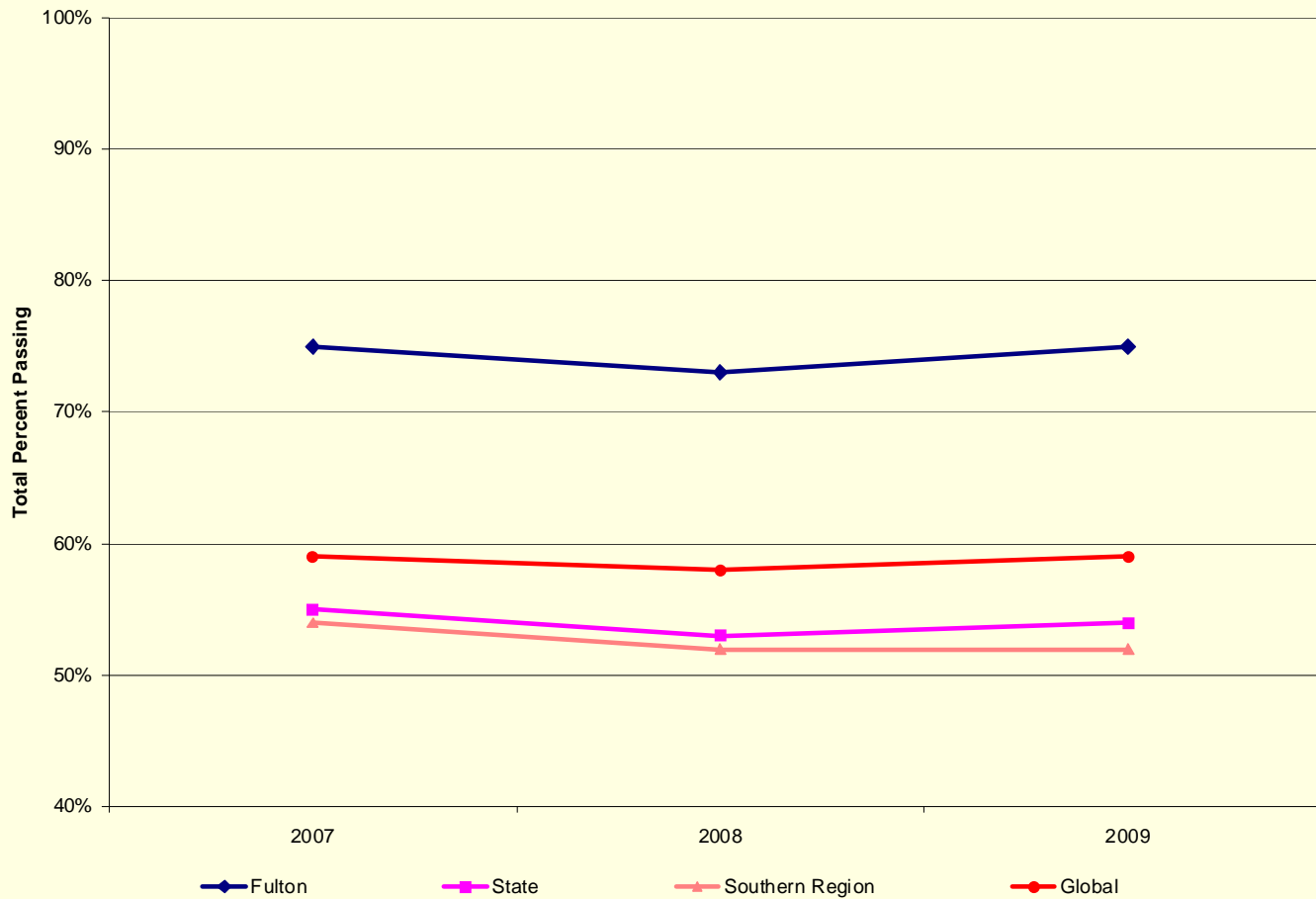


# Advanced Placement Tests

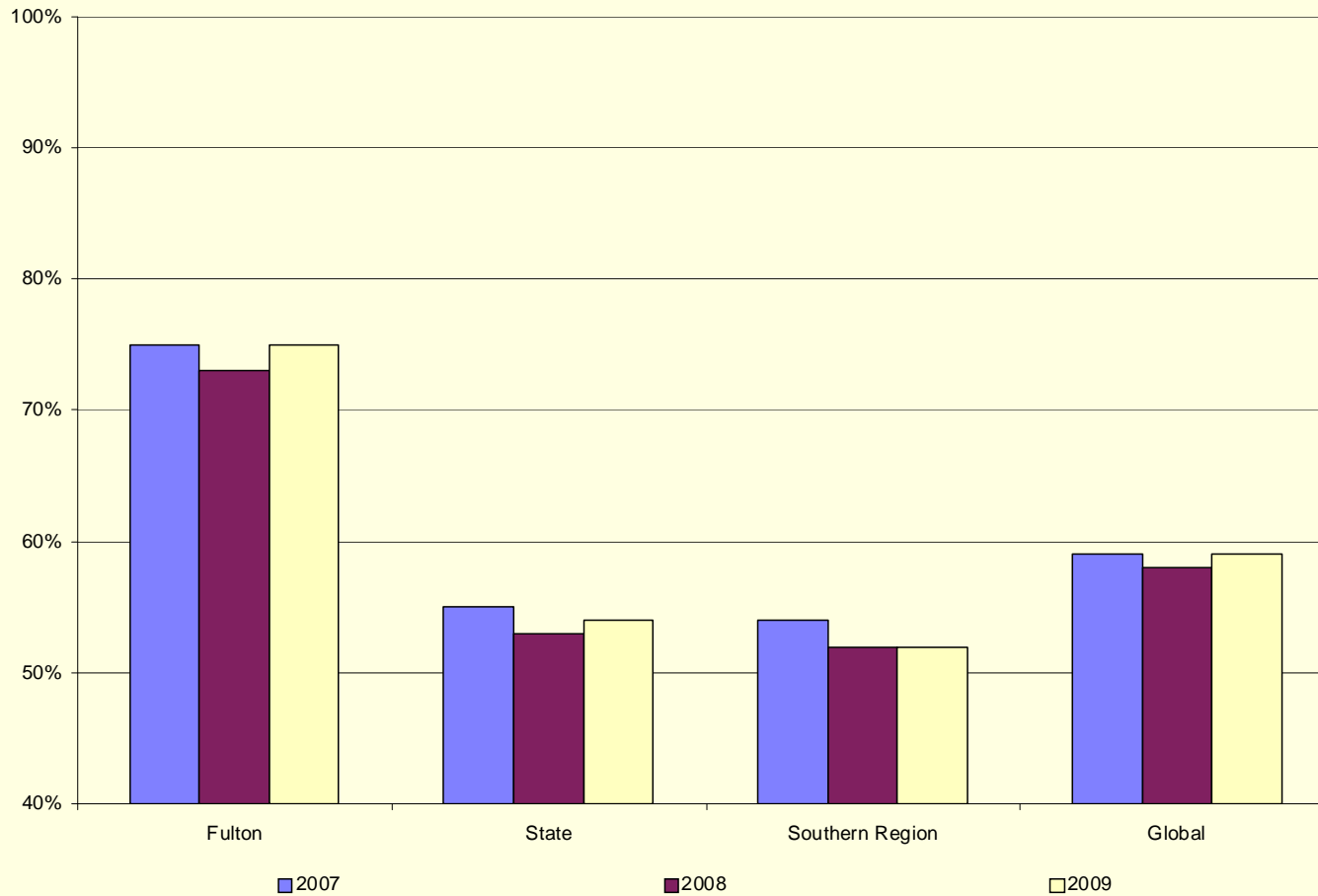
---

- Students elect to take Advanced Placement (AP) courses, which are offered in a variety of subjects. The curriculum and tests for these courses are developed by the College Board. A score of 3 or higher is considered on the Advanced Placement course. In some cases, students can receive college credit or course exemptions by passing AP courses in high school.

# Advanced Placement Percentage of Tests Passed



# Advanced Placement Percentage of Tests Passed

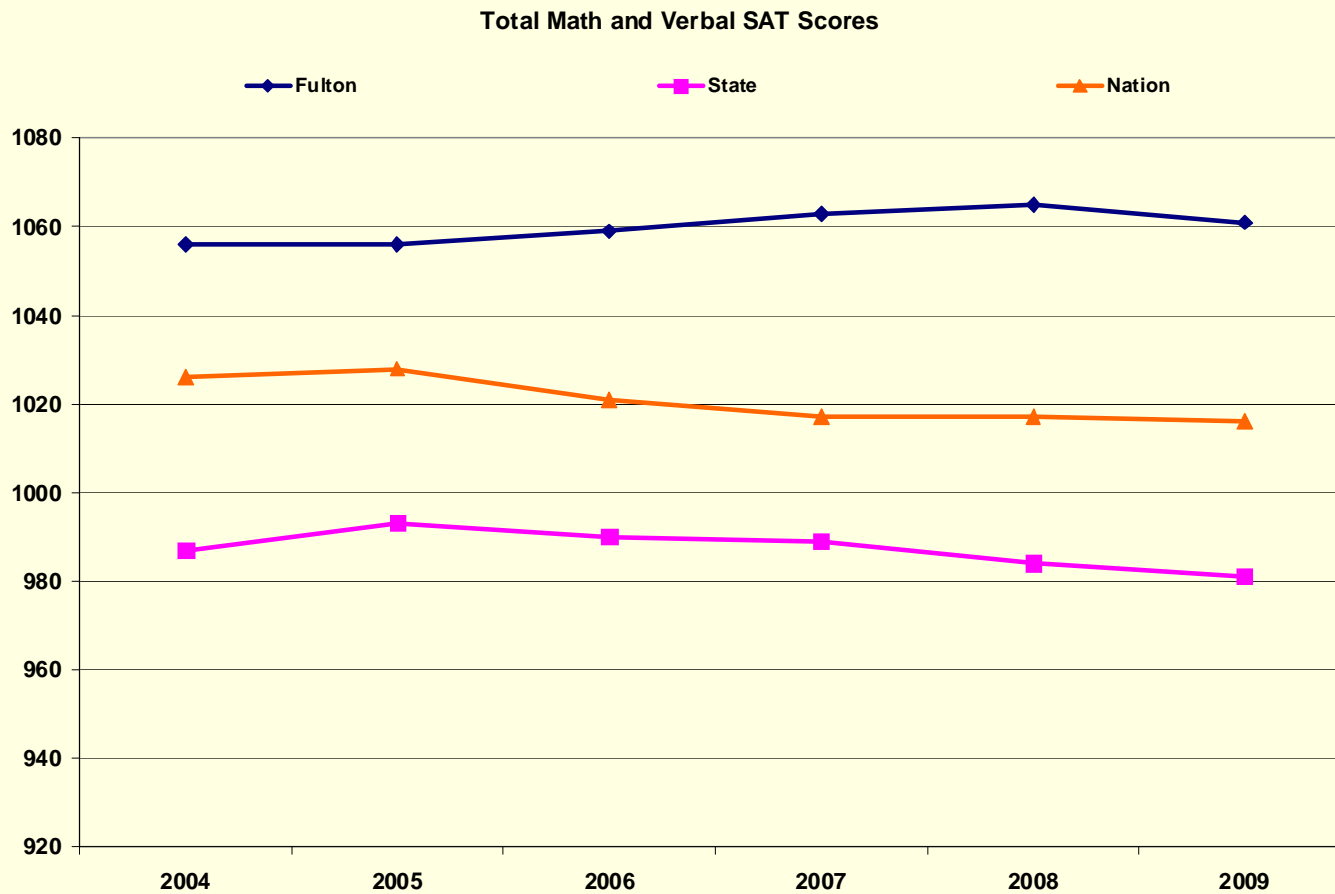


# SAT

---

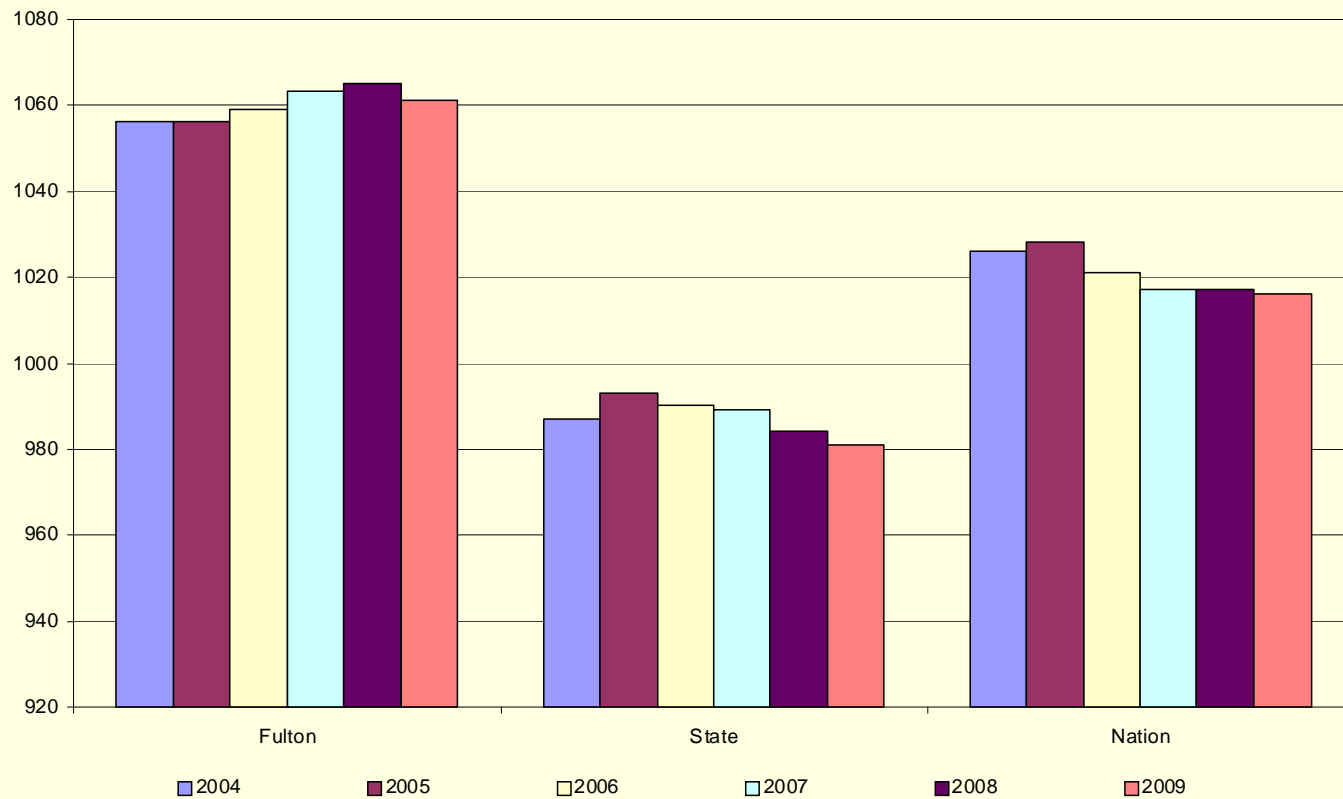
- These optional tests are generally taken by students in 11<sup>th</sup> and 12<sup>th</sup> grade. They are frequently used for college admission. The scores represent the last time a student took the test. Scores are reported for students in the year they are scheduled to graduate, regardless of when they last took the SAT. In Fulton County, 75% of students take the SAT versus 46% nationally.

# SAT – Math and Critical Reading



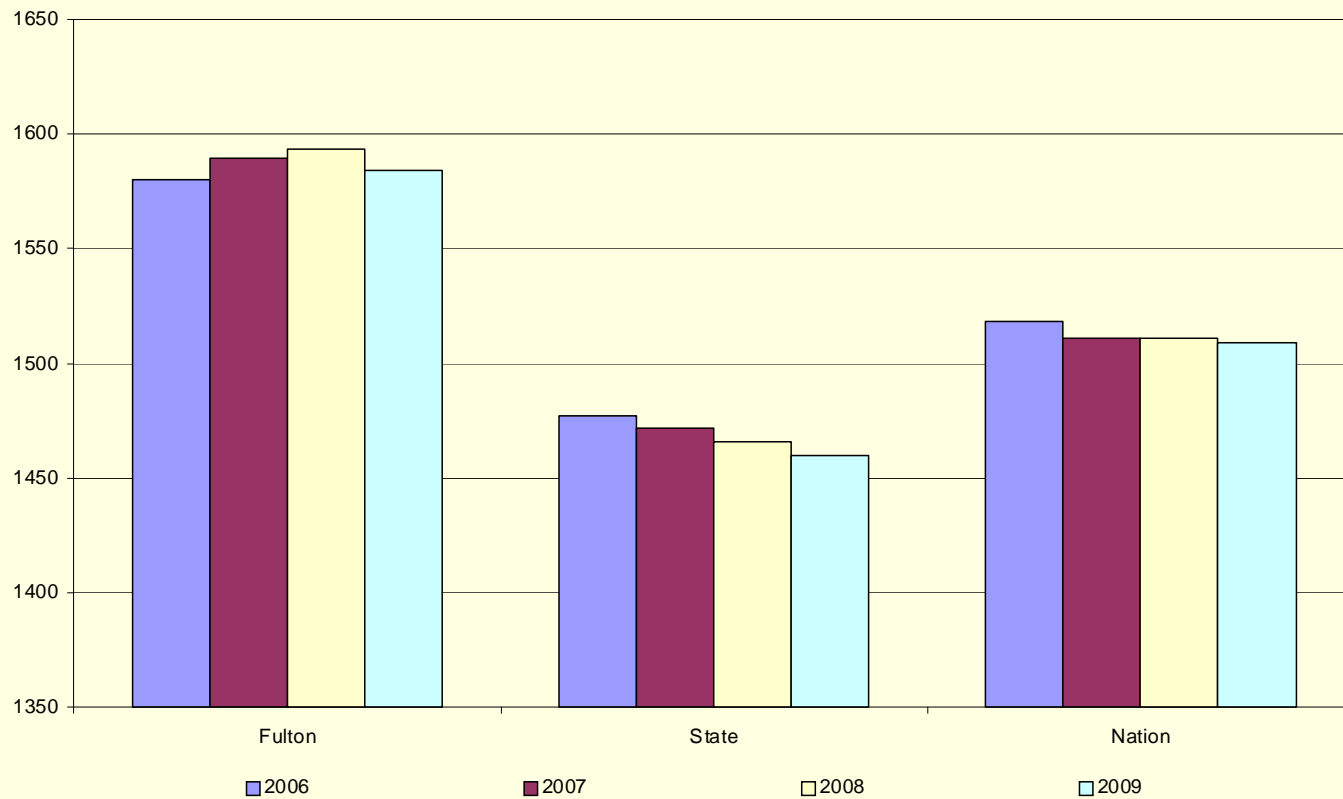
# SAT – Math and Critical Reading

Six Year Trend for  
Total Critical Reading and Math SAT Scores



# SAT – Total Scores

Four Year Trend for  
Total Critical Reading, Math and Writing SAT Scores

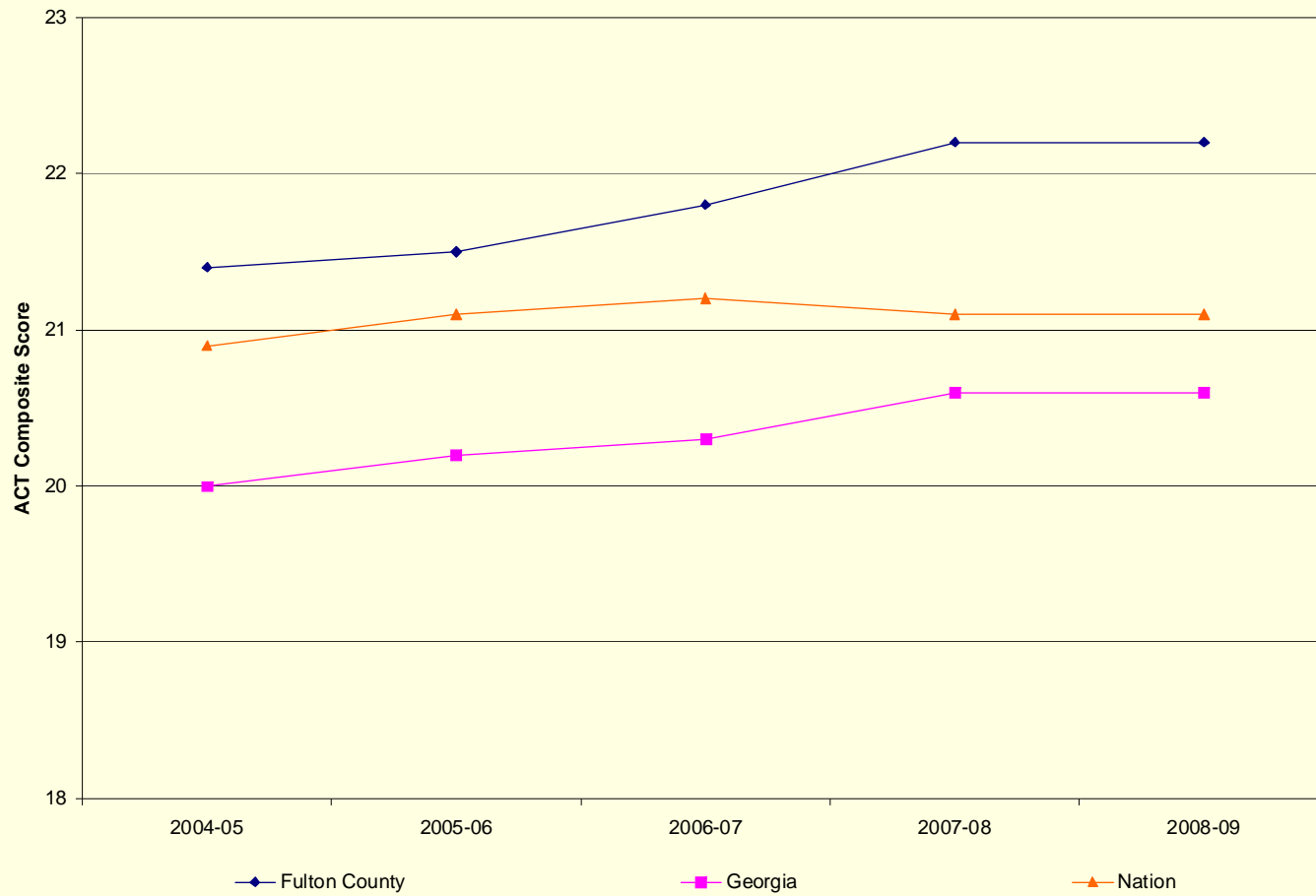


# ACT

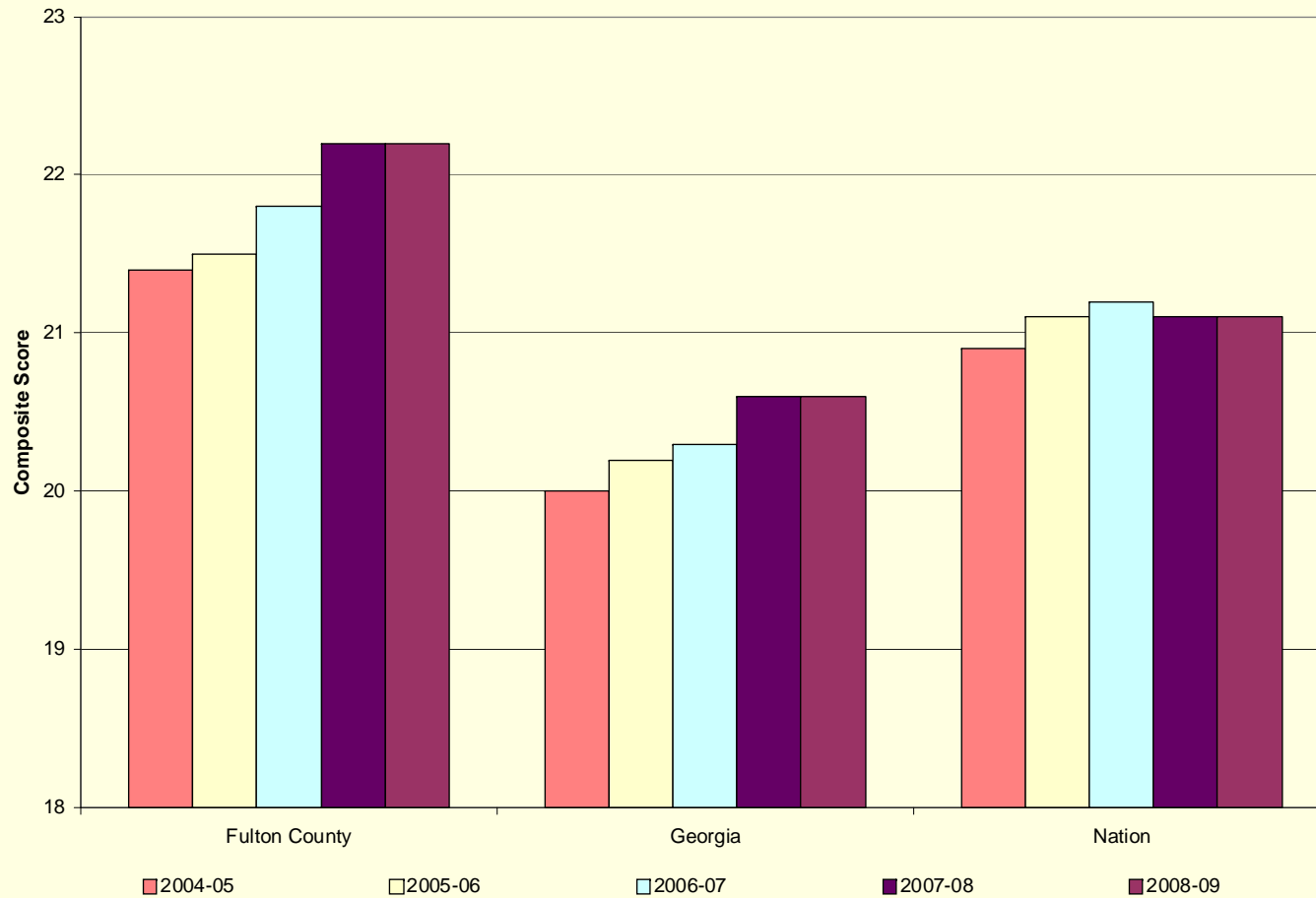
---

- The ACT is a college aptitude test designed to predict college readiness of the students who participate. It is usually taken during the junior year, and like the SAT, it is used as one factor in the college application process.
  - Score Range for the ACT is 0 - 36

# ACT – Line Chart



# ACT – Bar Chart



# **Schools Not Making Adequate Yearly Progress (AYP)**

---

2008 – 13 schools

2009 – 4 schools

# 2009 Schools Not Making Adequate Yearly Progress (AYP)

---

- McNair MS – English/Language Arts for Students with Disabilities
- Renaissance MS – Math, English/Language Arts for Students with Disabilities
- Creekside HS – Math for All and Black Students
- North Springs HS – Math for Black and Economically Disadvantaged Students

# Value-added Student Achievement Measures

---

Beginning in 2009-10, Fulton County Schools will also report performance in ways that distinguish student growth, and comparisons of schools with those with similar demographics. Our Balanced Scorecard includes these measures. System data will be available in the Fall of 2009.

# Value-added Department Measures

---

Also beginning in 2009-10, Fulton County Schools will report performance of central departments using value-added measures. Each department will report progress on customer satisfaction, employee professional development, and financial management. In addition, relevant measures of process improvement will be included. Wherever possible, data will be compared with previous year's performance as well as the performance of other, similar organizations. Department data will be available in 2010.



# Adding Value in Fulton County Schools